

LEASEHOLD



Apartment

27 WARREN WAY,  
EDGWARE, HA8 5RB

40% Shared ownership

£120,000

FEATURES



# 2 Bedroom Apartment located in Edgware

Call us on

0208 952 0808

[info@maxwellestates.co.uk](mailto:info@maxwellestates.co.uk)

[www.maxwellestates.co.uk](http://www.maxwellestates.co.uk)

On offer with Maxwell Estates is this well presented 2 bedrooms first floor flat. Can be bought with 40% shared ownership or more.

Property comprises of 2 double rooms, fully modernised bathroom, open plan living with fully fitted kitchen and good amount of storage space.

Close to all local amenities and transport links and good local schools.

Benefits from a communal childrens park with ample parking available on site.

Service charge = £1200 P/A

Ground Rent = £150 P/A

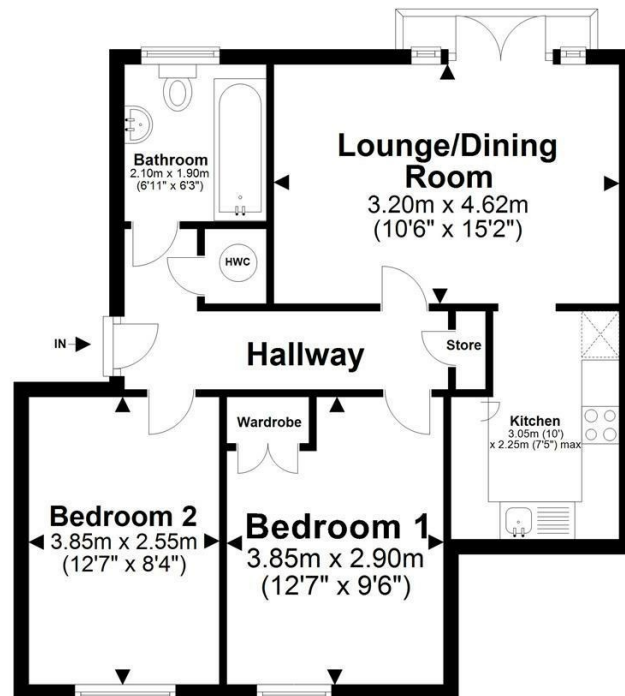
Call for more details or to arrange for a viewing.

Council Tax Band

D

## First Floor Flat

Approx. 55.4 sq. metres (596.6 sq. feet)



Total area: approx. 55.4 sq. metres (596.6 sq. feet)

All images used are for illustrative purposes only. Floor plans are intended to give a general indication of the proposed layout only. All images and dimensions are not intended to form part any contract or warranty  
Plan produced using PlanUp.

Warren Way, Edgware, Middlesex, HA8 5RB

Energy Efficiency Rating		Current	Potential
<i>Very energy efficient - lower running costs</i>			
(92 plus)	A		
(81-91)	B	80	81
(69-80)	C		
(55-68)	D		
(39-54)	E		
(21-38)	F		
(1-20)	G		
<i>Not energy efficient - higher running costs</i>			
<b>England &amp; Wales</b>		EU Directive 2002/91/EC	

Agents Note: Whilst every care has been taken to prepare these particulars, they are for guidance purposes only. All measurements are approximate and are for general guidance purposes only and whilst every care has been taken to ensure their accuracy, they should not be relied upon and potential buyers are advised to recheck the measurements.

