

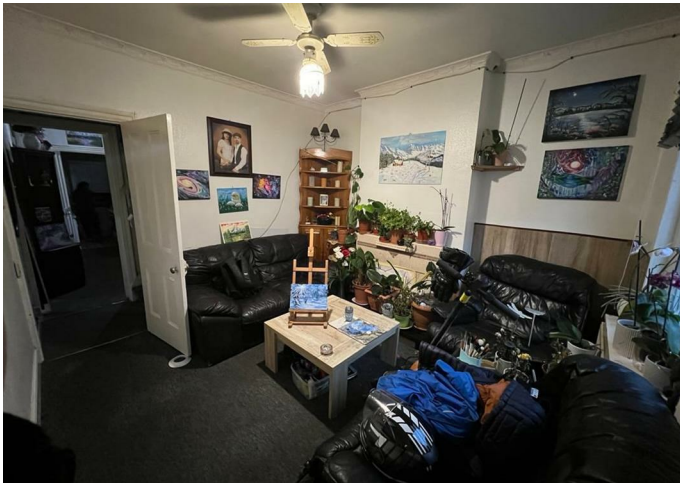


House - Terraced

52 HAMPTON ROAD,
LUTON, LU4 8AP

£230,000

FEATURES



2 Bedroom House - Terraced located in Luton

2 Bedrooms mid-terraced house for sale within walking distance to bury park high road and all local public transport. Property consists of 2 bedrooms, 2 reception rooms, 1 downstairs bathroom, kitchen and large garden.

Call us on


0208 952 0808

info@maxwellestates.co.uk

www.maxwellestates.co.uk

Council Tax Band

D

Energy Efficiency Rating		
	Current	Potential
<i>Very energy efficient - lower running costs</i>		
(92 plus) A		
(81-91) B		
(69-80) C		
(55-68) D		
(39-54) E		
(21-38) F		
(1-20) G		
<i>Not energy efficient - higher running costs</i>		
England & Wales		EU Directive 2002/91/EC 

Agents Note: Whilst every care has been taken to prepare these particulars, they are for guidance purposes only. All measurements are approximate and are for general guidance purposes only and whilst every care has been taken to ensure their accuracy, they should not be relied upon and potential buyers are advised to recheck the measurements.

