

HAWTHORN MEADOWS

CAPTAINS PARADE, WHIPPINGHAM, ISLE OF WIGHT PO32 6GT



Hawthorn Meadows
Captains Parade
Whippingham
Isle Of Wight
PO32 6GT

DEVELOPMENT LAYOUT

barratthomes.co.uk
or call 0844 811 18 77



BARRATT
HOMES
find the one

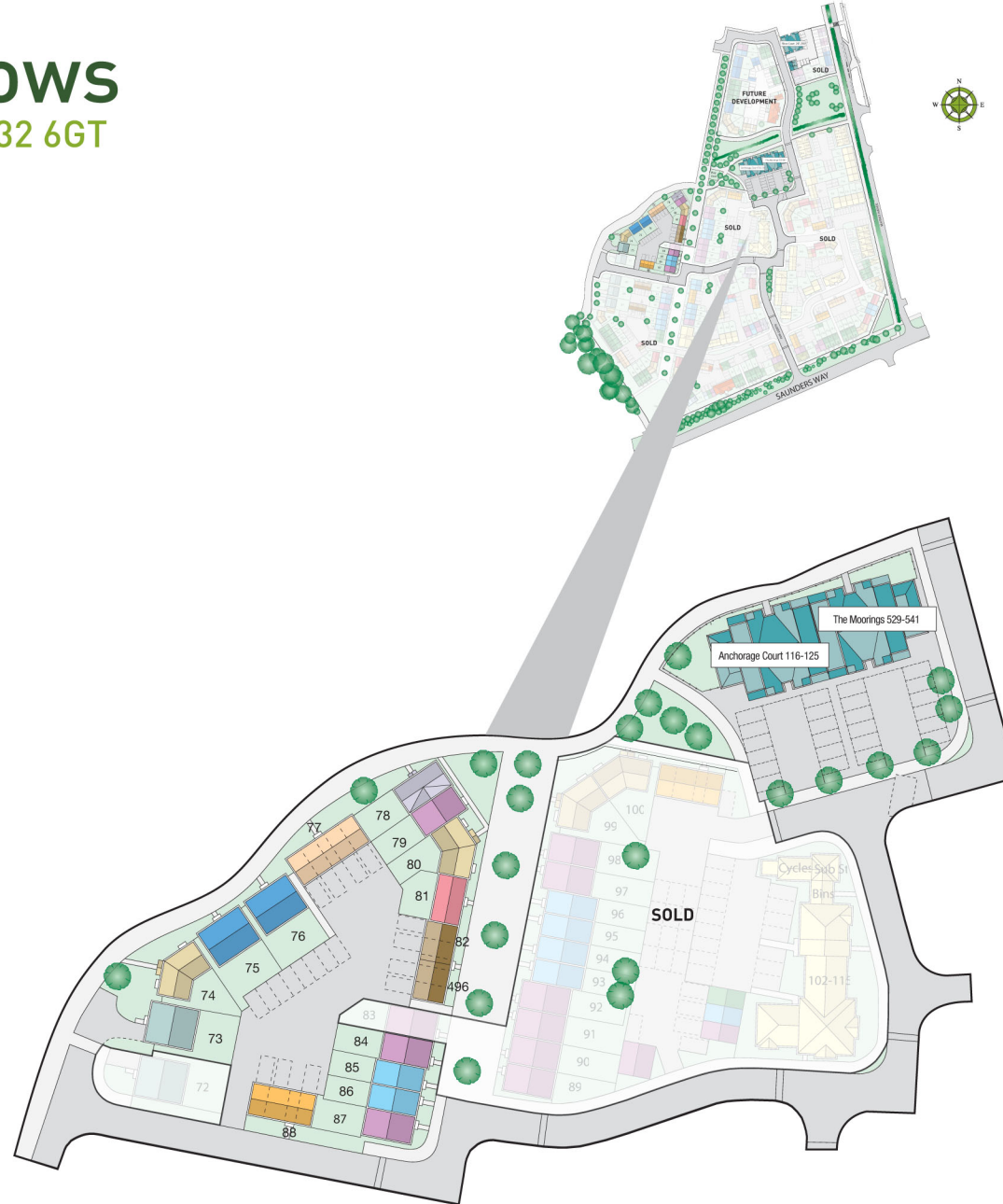
Hawthorn Meadows

Captains Parade, Whippingham PO32 6GT

Phase 1

Site layout

-  The Thornton - 4 bedroom house
-  The Eskdale - 3 bedroom house
-  The Endale - 3 bedroom house
-  The Calborne - 3 bedroom house
-  The Maidstone - 3 bedroom house
-  The Richmond - 2 bedroom house
-  The Aberdeen - 2 bedroom house
-  The Milford - 2 bedroom house
-  The Midhurst - 2 bedroom house
-  The iPad - 1 bedroom apartment



barratthomes.co.uk



BARRATT
HOMES
find the one

IMPORTANT NOTICE: This site layout is intended for illustration purposes only and may change for example in response to market demand or ground conditions. Consequently, it should be treated as general guidance and cannot be relied upon as accurately describing any of the Specified Matters prescribed by any Order made under Property Misdescriptions Act 1991. Nor do the contents constitute a contract, part of a contract or a warranty.

BARRW/PANMEADOW/109345

The Aberdeen

Hawthorn Meadows, Whippingham,
Isle of Wight



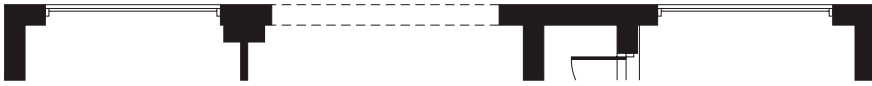
BARRATT
HOMES

built around you

Artists impression is a guide to the Aberdeen House Type.
Please ask for more details.

The Aberdeen Hawthorn Meadows, Whippingham, Isle of Wight

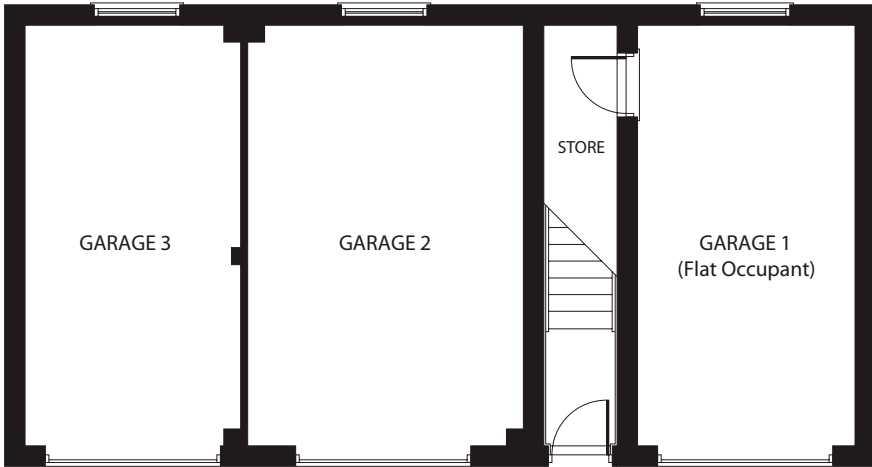
Plot: 170



Plots: 3, 30, 37, 88, 101 & 219



Plot: 212

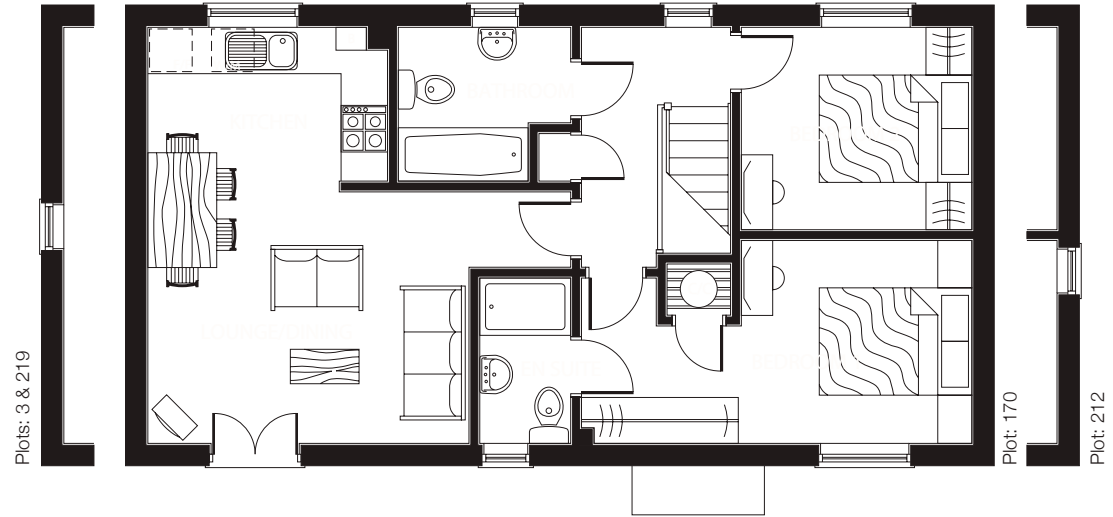


Plots: 3, 30, 37, 88, 101 & 219



Plot: 170

GROUND FLOOR



FIRST FLOOR (Approximate dimensions)

	Imperial	Metric
LOUNGE/DINING	13'8" x 10'9" max's	4175 x 3300 max's
KITCHEN	10'2" x 6'7" max's	3125 x 2025 max's
BEDROOM 1	16'9" x 8'8" max's	5100 x 2650 max's
BEDROOM 2	9'11" x 8'8" max's	3025 x 2650 max's
BATHROOM	7'5" x 6'7" max's	2275 x 2025 max's

Plot 3 • Plot 30 • Plot 37 • Plot 88 • Plot 101 • Plot 170 • Plot 212 • Plot 219

Note: Dimensions should not be used for carpet sizes, appliance spaces or items of furniture. Purchasers furniture may be different size to that indicated. Some properties may be handed, please ask for details.

The Calborne

Hawthorn Meadows, Whippingham,
Isle of Wight

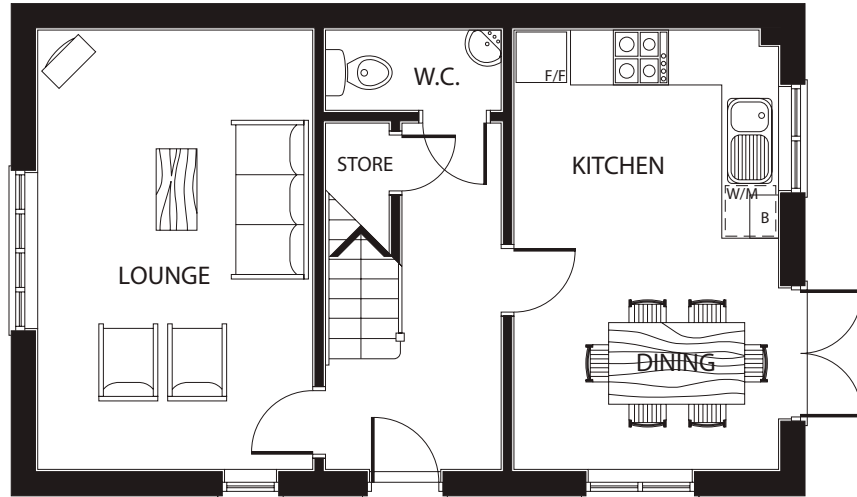


BARRATT
HOMES

built around you

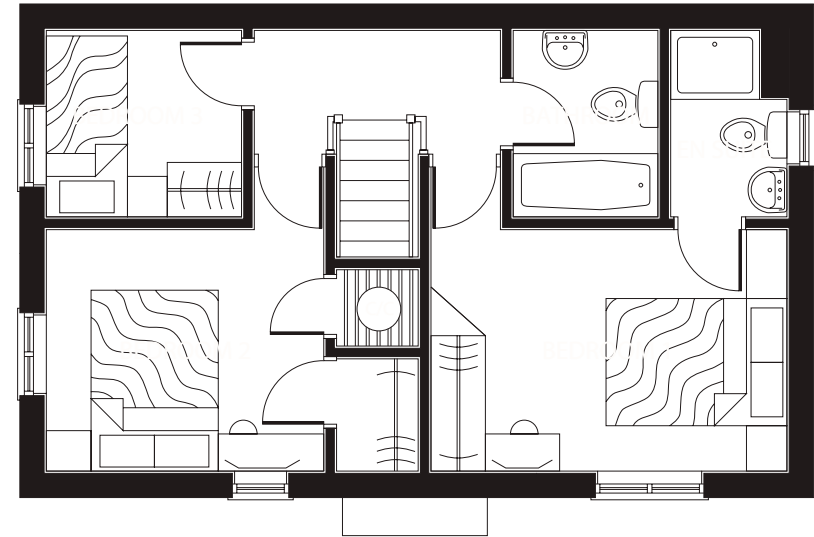
Artists impression is a guide to the Calborne House Type.
Please ask for more details.

The Calborne Hawthorn Meadows, Whippingham, Isle of Wight



GROUND FLOOR (Approximate dimensions)

	Imperial	Metric
LOUNGE	10'0" x 15'10" max's	3050 x 4850 max's
KITCHEN/DINING	15'10" x 9'7" max's	4850 x 2925 max's



FIRST FLOOR (Approximate dimensions)

	Imperial	Metric
BEDROOM 1	12'11" x 8'10" max's	3950 x 2700 max's
EN SUITE	4'1" x 6'9" max's	1250 x 2050 max's
BEDROOM 2	10'0" x 8'10" max's	3050 x 2700 max's
BEDROOM 3	7'1" x 6'9" max's	2150 x 2050 max's
BATHROOM	5'7" x 6'9" max's	1700 x 2050 max's

Plot 35 • Plot 38 • Plot 78 • Plot 171

Note: Dimensions should not be used for carpet sizes, appliance spaces or items of furniture. Purchasers furniture may be different size to that indicated. Some properties may be handed, please ask for details.

The Endale

Hawthorn Meadows, Whippingham,
Isle of Wight

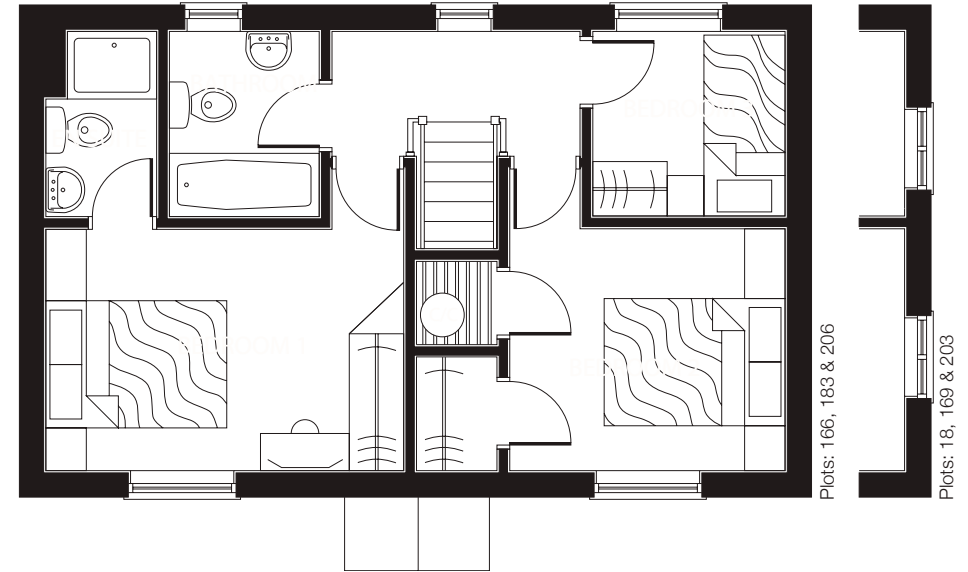
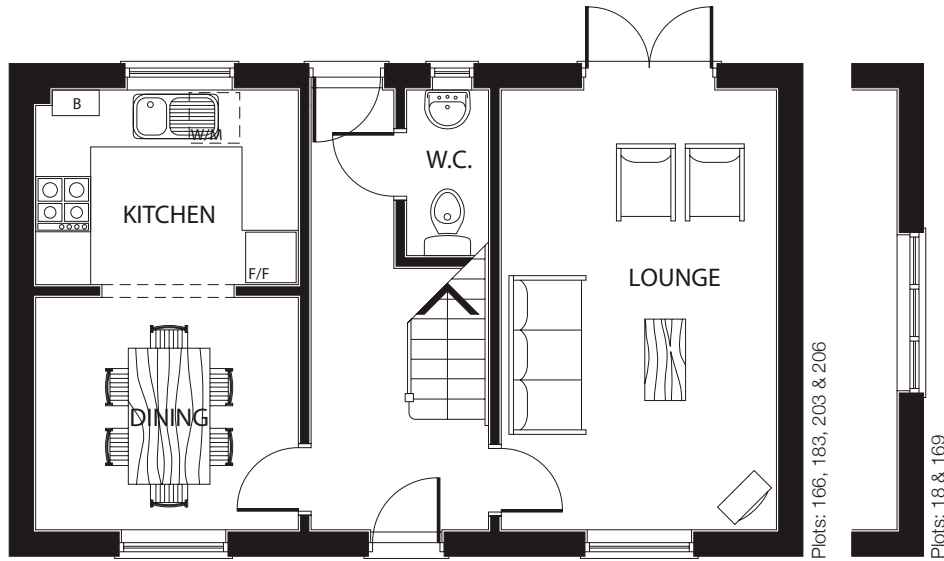


BARRATT
HOMES

built around you

Artists impression is a guide to the Endale House Type.
Please ask for more details.

The Endale Hawthorn Meadows, Whippingham, Isle of Wight



GROUND FLOOR (Approximate dimensions)

	Imperial	Metric
LOUNGE	15'10" x 10'0" max's	4850 x 3050 max's
DINING	9'5" x 8'5" max's	2875 x 2575 max's
KITCHEN	9'5" x 7'1" max's	2875 x 2175 max's

FIRST FLOOR (Approximate dimensions)

	Imperial	Metric
BEDROOM 1	12'11" x 8'10" max's	3950 x 2700 max's
EN SUITE	6'9" x 4'1" max's	2050 x 1250 max's
BEDROOM 2	10'0" x 8'10" max's	3050 x 2700 max's
BEDROOM 3	7'1" x 6'9" max's	2150 x 2050 max's
BATHROOM	6'9" x 5'7" max's	2050 x 1700 max's

Plot 18 • Plot 36 • Plot 55 • Plot 81 • Plot 166 • Plot 169 • Plot 183 • Plot 203 • Plot 206

Note: Dimensions should not be used for carpet sizes, appliance spaces or items of furniture. Purchasers furniture may be different size to that indicated. Some properties may be handed, please ask for details.

The Eskdale

Hawthorn Meadows, Whippingham,
Isle of Wight

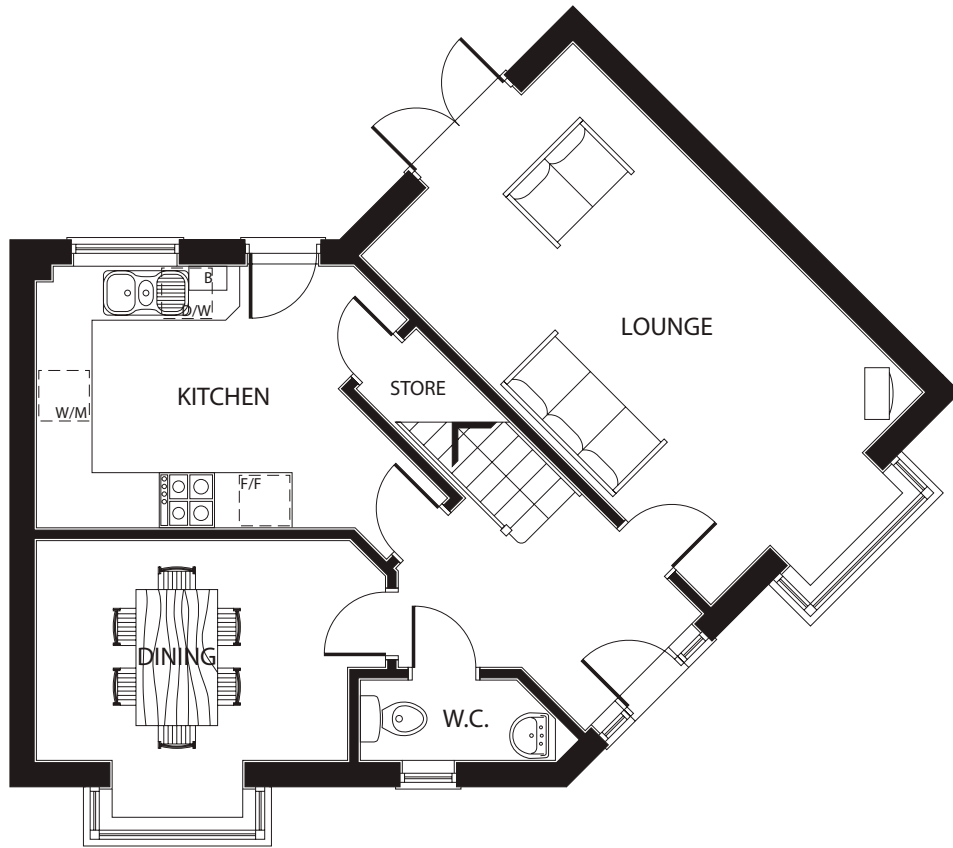


BARRATT
HOMES

built around you

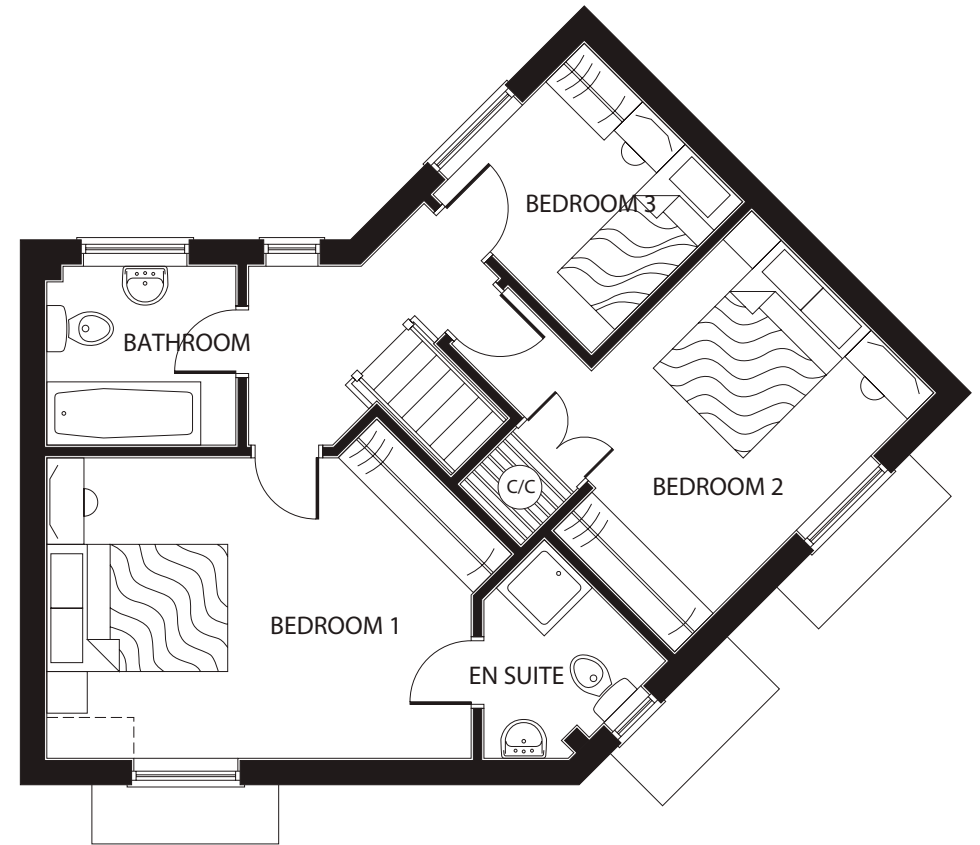
Artists impression is a guide to the Eskdale House Type.
Please ask for more details.

The Eskdale Hawthorn Meadows, Whippingham, Isle of Wight



GROUND FLOOR (Approximate dimensions)

	Imperial	Metric
LOUNGE	17'10" x 10'10" max's	5450 x 3325 max's
KITCHEN	13'5" x 9'6" max's	4100 x 2900 max's
DINING	12'7" x 7'10" max's	3850 x 2400 max's



FIRST FLOOR (Approximate dimensions)

	Imperial	Metric
BEDROOM 1	15'4" x 10'11" max's	4700 x 3350 max's
EN SUITE	6'3" x 6'2" max's	1900 x 1875 max's
BEDROOM 2	11'0" x 9'4" max's	3375 x 2850 max's
BEDROOM 3	8'2" x 7'9" max's	2500 x 2350 max's
BATHROOM	6'10" x 6'6" max's	2100 x 2000 max's

Plot 17 • Plot 56 • Plot 66 • Plot 74 • Plot 80 • Plot 99 • Plot 100
Plot 167 • Plot 168 • Plot 182 • Plot 202 • Plot 207

Note: Dimensions should not be used for carpet sizes, appliance spaces or items of furniture. Purchasers furniture may be different size to that indicated. Some properties may be handed, please ask for details.

The Gloucester

Hawthorn Meadows, Whippingham,
Isle of Wight

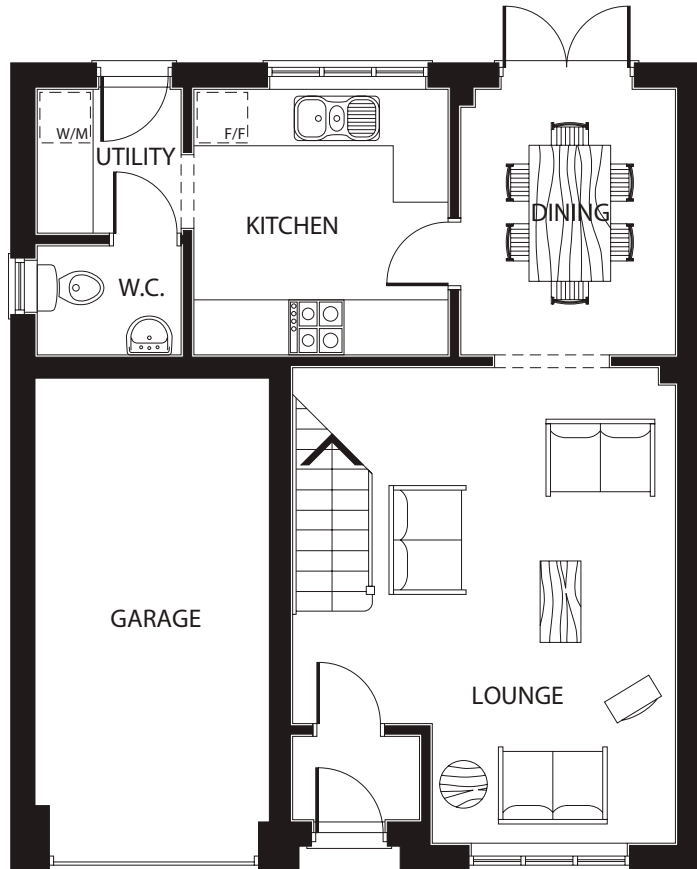


BARRATT
HOMES

built around you

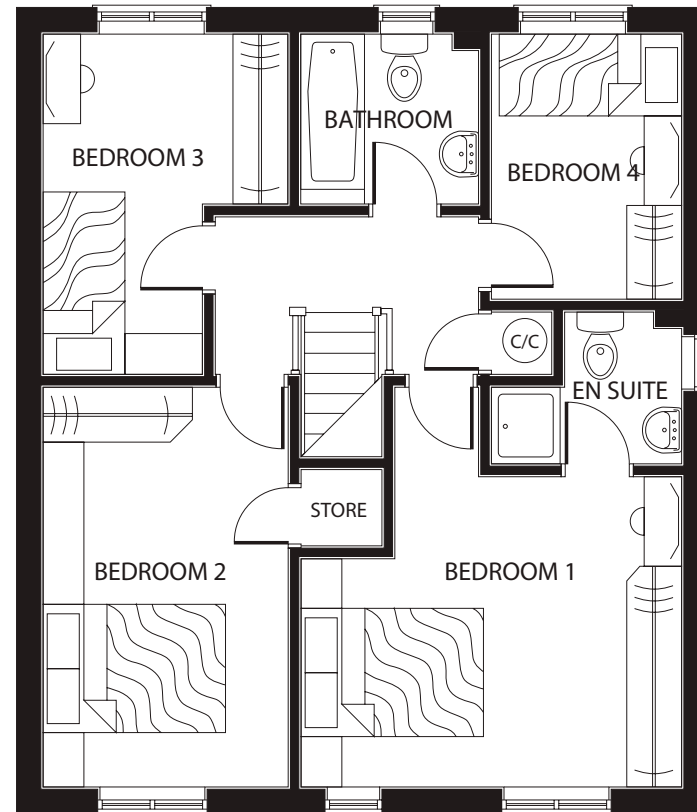
Artists impression is a guide to the Gloucester House Type.
Please ask for more details.

The Gloucester Hawthorn Meadows, Whippingham, Isle of Wight



GROUND FLOOR (Approximate dimensions)

	Imperial	Metric
LOUNGE	16'9" x 13'7" max's	5125 x 4150 max's
KITCHEN	9'5" x 9'1" max's	2875 x 2775 max's
DINING	9'5" x 7'8" max's	2875 x 2350 max's
UTILITY	5'2" x 5'2" max's	1575 x 1575 max's
GARAGE	17'0" x 8'4" max's	5200 x 2550 max's



FIRST FLOOR (Approximate dimensions)

	Imperial	Metric
BEDROOM 1	13'6" x 11'0" max's	4150 x 3350 max's
EN SUITE	6'9" x 5'5" max's	2075 x 1650 max's
BEDROOM 2	14'2" x 8'8" max's	4325 x 2650 max's
BEDROOM 3	12'1" x 8'8" max's	3700 x 2650 max's
BEDROOM 4	9'6" x 6'9" max's	2900 x 2075 max's
BATHROOM	6'5" x 6'1" max's	1950 x 1850 max's

Plot 67 • Plot 68 • Plot 69 • Plot 72 • Plot 73

Note: Dimensions should not be used for carpet sizes, appliance spaces or items of furniture. Purchasers furniture may be different size to that indicated. Some properties may be handed, please ask for details.



iPad

1 bedroom apartment

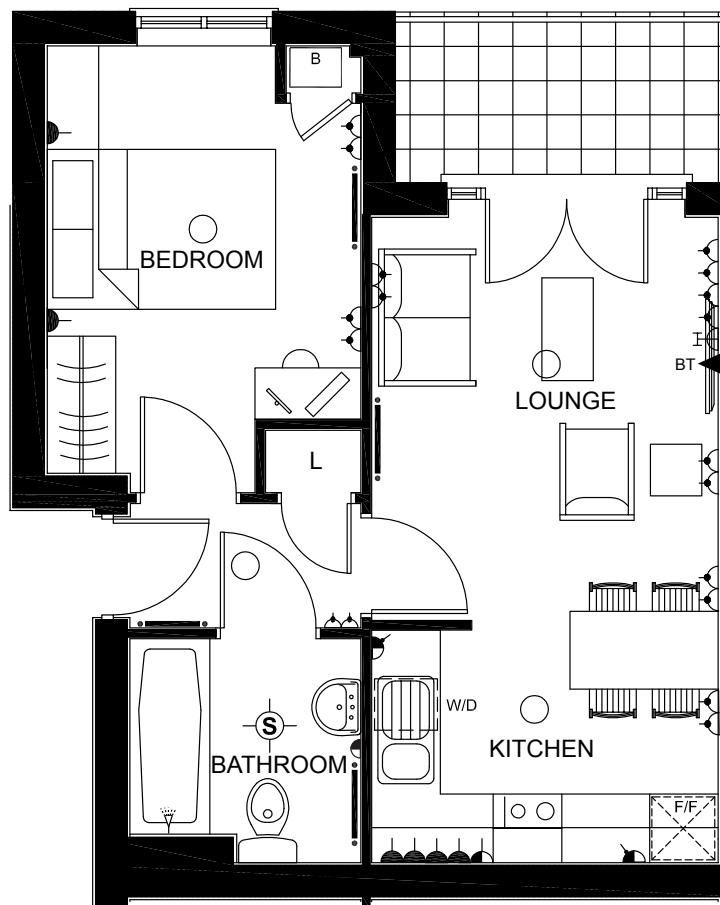
Hawthorn Meadows,
Whippingham,
Isle of Wight










Computer generated image shows iPad apartments at Hawthorn Meadows.
Please note; elevational treatments may vary.



BARRATT
HOMES
find the one

iPad 1 bedroom apartment



-  DOUBLE SWITCHED SOCKET OUTLET - 500mm ABOVE FLOOR LEVEL
-  SWITCH SOCKET OUTLET ABOVE WORKTOP
-  DOUBLE SWITCHED SOCKET OUTLET ABOVE WORKTOP
-  T.V. AERIAL SOCKET & COAXIAL CABLE
-  PENDANT LIGHT
-  RADIATOR
- B** BOILER
- F/F** FRIDGE FREEZER SPACE
- W/D** WASHER DRYER SPACE
-  SOCKET OUTLET BELOW WORKTOP
-  SWITCHED UNIT FOR HOB / EXTRACTOR HOOD / BOILER
-  SHAVER SOCKET
-  LIGHT FITTING TO WET ROOMS

IMPORTANT NOTICE: These particulars are for illustration only. We operate a policy of continuous product development and individual features such as windows, garages and elevational treatments may vary from time to time. Consequently these particulars should be treated as general guidance only and cannot be relied upon as accurately describing any of the Specified Matters prescribed by any Order made under the Property Misdescriptions Act 1991. Nor do they constitute a contract, part of a contract or a warranty. Dimensions should not be used for carpet sizes, appliance spaces or items of furniture. Purchasers furniture may be of a different size to that indicated. Some properties may be handed, please ask for details.

Approximate dimensions

Lounge	3030 x 3530mm	(9'11" x 11'7")
Kitchen	3030 x 2030mm	(9'11" x 6'8")
Bathroom	2020 x 1960mm	(6'7" x 6'5")
Bedroom	2750 x 3740mm	(9'0" x 12'3")



The Kingsville

Hawthorn Meadows, Whippingham,
Isle of Wight

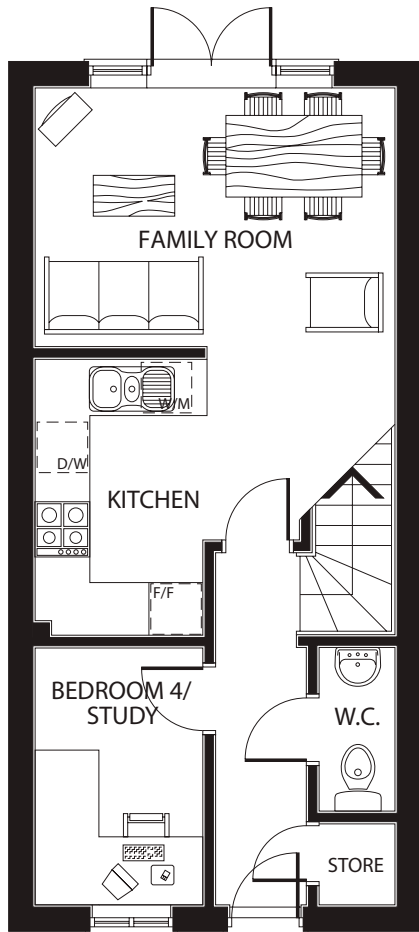


BARRATT
HOMES

built around you

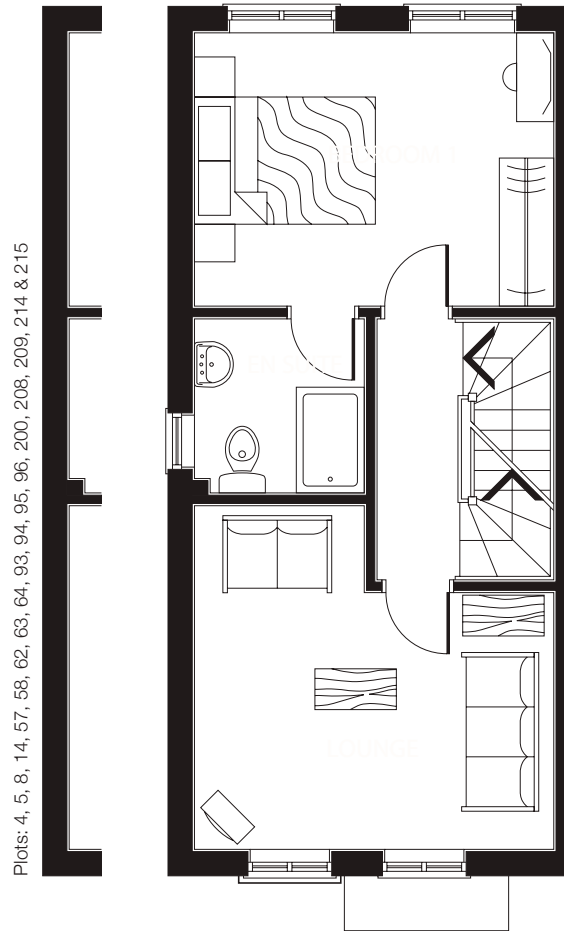
Artists impression is a guide to the Kingsville House Type.
Please ask for more details.

The Kingsville Hawthorn Meadows, Whippingham, Isle of Wight



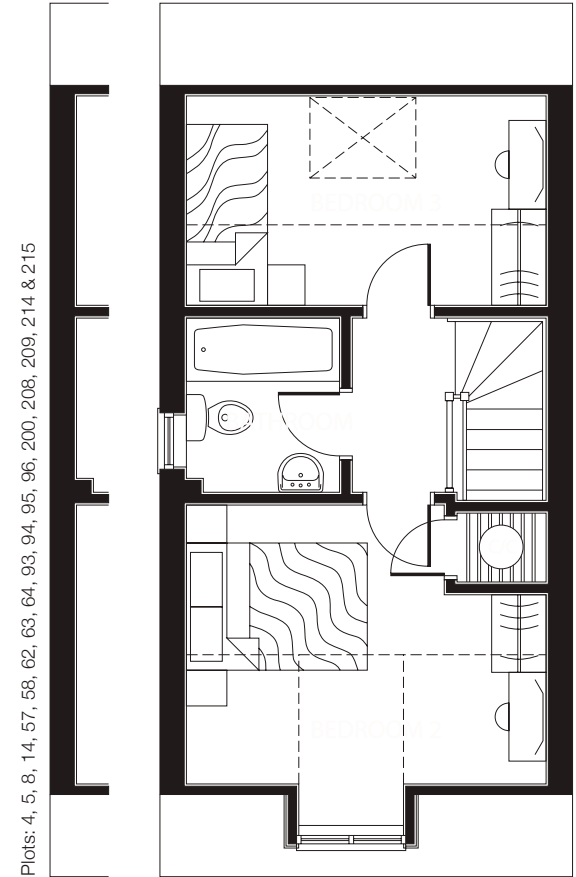
GROUND FLOOR (Approximate dimensions)

	Imperial	Metric
FAMILY ROOM	14'7" x 12'11" max's	4450 x 3950 max's
KITCHEN	10'0" x 6'2" max's	3050 x 1875 max's
BED 4/STUDY	9'4" x 6'0" max's	2850 x 1825 max's



FIRST FLOOR (Approximate dimensions)

	Imperial	Metric
LOUNGE	12'11" x 9'11" max's	3950 x 3025 max's
BEDROOM 1	12'11" x 12'6" max's	3950 x 3825 max's
EN SUITE	6'5" x 6'2" max's	1950 x 1900 max's



SECOND FLOOR (Approximate dimensions)

	Imperial	Metric
BEDROOM 2	12'11" x 7'7" max's	3950 x 2300 max's
BEDROOM 3	12'11" x 10'2" max's	3950 x 3100 max's
BATHROOM	6'5" x 5'7" max's	1950 x 1700 max's

Plot 4 • Plot 5 • Plot 6 • Plot 7 • Plot 8 • Plot 14 • Plot 57 • Plot 58 • Plot 59 • Plot 61
 Plot 62 • Plot 63 • Plot 64 • Plot 65 • Plot 93 • Plot 94 • Plot 95 • Plot 96 • Plot 200
 Plot 201 • Plot 208 • Plot 209 • Plot 210 • Plot 213 • Plot 214 • Plot 215

Note: Dimensions should not be used for carpet sizes, appliance spaces or items of furniture. Purchasers furniture may be different size to that indicated. Some properties may be handed, please ask for details.

The Maidstone

Hawthorn Meadows, Whippingham,
Isle of Wight

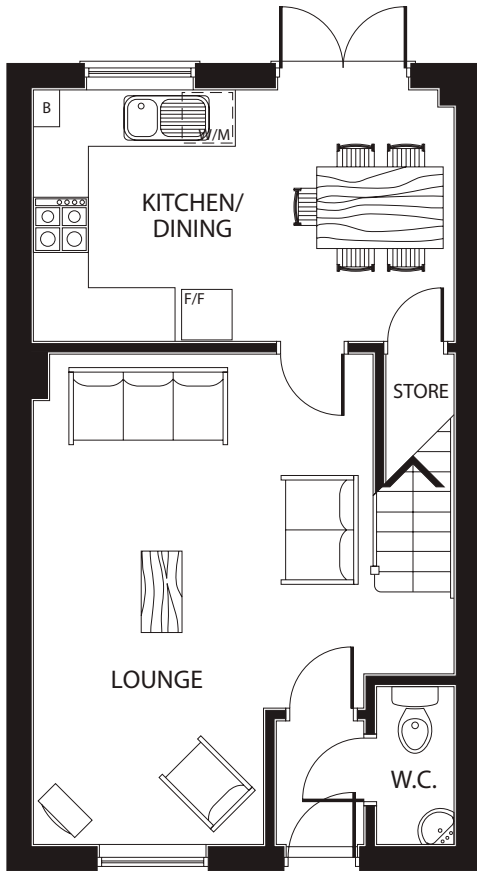


BARRATT
HOMES

built around you

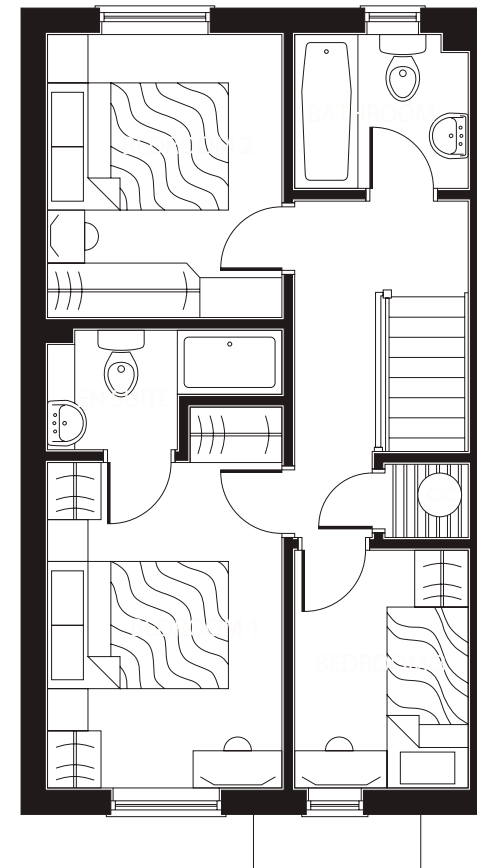
Artists impression is a guide to the Maidstone House Type.
Please ask for more details.

The Maidstone Hawthorn Meadows, Whippingham, Isle of Wight



GROUND FLOOR (Approximate dimensions)

	Imperial	Metric
LOUNGE	17'8" x 12'3" max's	5400 x 3750 max's
KITCHEN/DINING	15'1" x 9'0" max's	4600 x 2750 max's



FIRST FLOOR (Approximate dimensions)

	Imperial	Metric
BEDROOM 1	11'9" x 8'6" max's	3600 x 2600 max's
EN SUITE	8'6" x 4'5" max's	2600 x 1350 max's
BEDROOM 2	10'2" x 8'6" max's	3100 x 2600 max's
BEDROOM 3	8'8" x 6'3" max's	2650 x 1925 max's
BATHROOM	6'3" x 5'7" max's	1925 x 1700 max's

Plot 2 • Plot 15 • Plot 26 • Plot 33 • Plot 34 • Plot 39 • Plot 41 • Plot 50 • Plot 79
Plot 83 • Plot 84 • Plot 87 • Plot 89 • Plot 90 • Plot 91 • Plot 216 • Plot 218

Note: Dimensions should not be used for carpet sizes, appliance spaces or items of furniture. Purchasers furniture may be different size to that indicated. Some properties may be handed, please ask for details.



The Midhurst

1 bedroom coach house
Plots 71, 129, 477, 494,
496 & 498

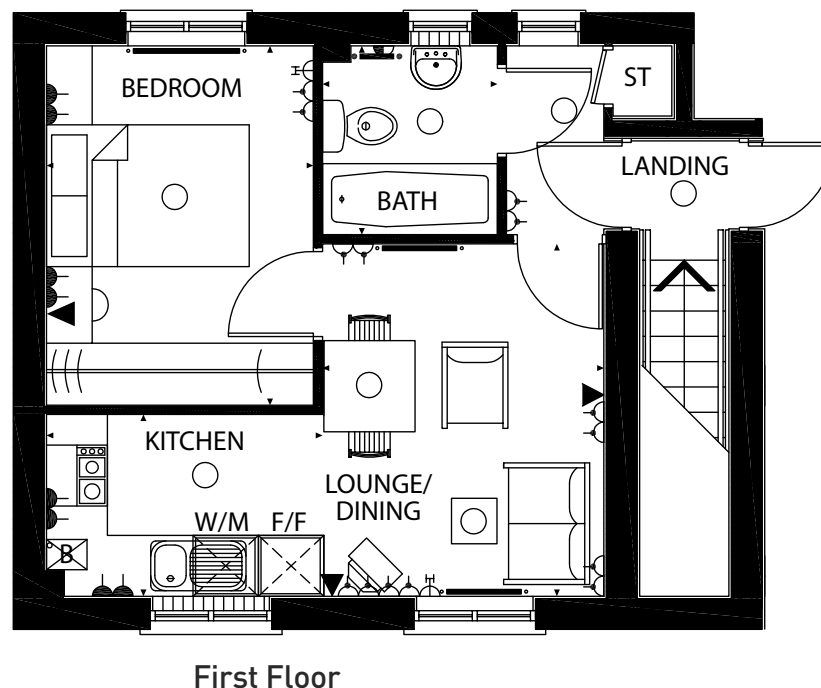
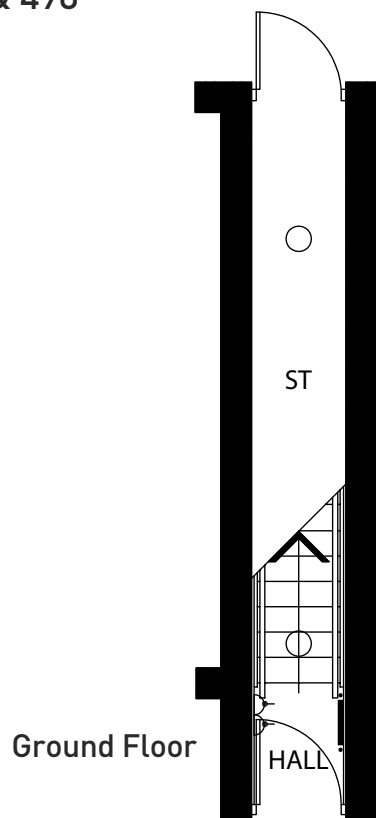
Hawthorn Meadows
Captains Parade
Whippingham
Isle of Wight
PO32 6GT










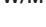




Computer generated image shows The Midhurst coach house at Hawthorn Meadows.
Please note; elevational treatments may vary.

The Midhurst

1 bedroom coach house

Plots 71, 129, 477, 494,
496 & 498



-  DOUBLE SWITCHED SOCKET OUTLET - 500mm ABOVE FLOOR LEVEL
-  SWITCH SOCKET OUTLET ABOVE WORKTOP
-  DOUBLE SWITCHED SOCKET OUTLET ABOVE WORKTOP
-  T.V. AERIAL SOCKET & COAXIAL CABLE
-  TELEPHONE OUTLET POINT
-  PENDANT LIGHT
-  RADIATOR
-  BOILER
-  F/F FRIDGE FREEZER SPACE
-  W/M WASHING MACHINE SPACE
-  ST STORE
-  SOCKET OUTLET BELOW WORKTOP
-  SWITCHED UNIT FOR HOB / EXTRACTOR HOOD / BOILER
-  SHAVER SOCKET

IMPORTANT NOTICE: These particulars are for illustration only. We operate a policy of continuous product development and individual features such as windows, garages and elevational treatments may vary from time to time. Consequently these particulars should be treated as general guidance only and cannot be relied upon as accurately describing any of the Specified Matters prescribed by any Order made under the Property Misdescriptions Act 1991. Nor do they constitute a contract, part of a contract or a warranty. Dimensions should not be used for carpet sizes, appliance spaces or items of furniture. Purchasers furniture may be of a different size to that indicated. Some properties may be handed, please ask for details.

Approximate dimensions

Lounge/Dining	2775 x 3475mm	(9'1" x 11'4")
Kitchen	2715 x 1800mm	(8'11" x 5'10")
Bedroom	2625 x 3550mm	(8'7" x 11'7")
Bathroom	1725 x 1850mm	(5'8 x 6'1")





The Midhurst

1 bedroom coach house
Plots 70, 82, 265, 495,
497 & 499

Hawthorn Meadows
Captains Parade
Whippingham
Isle of Wight
PO32 6GT

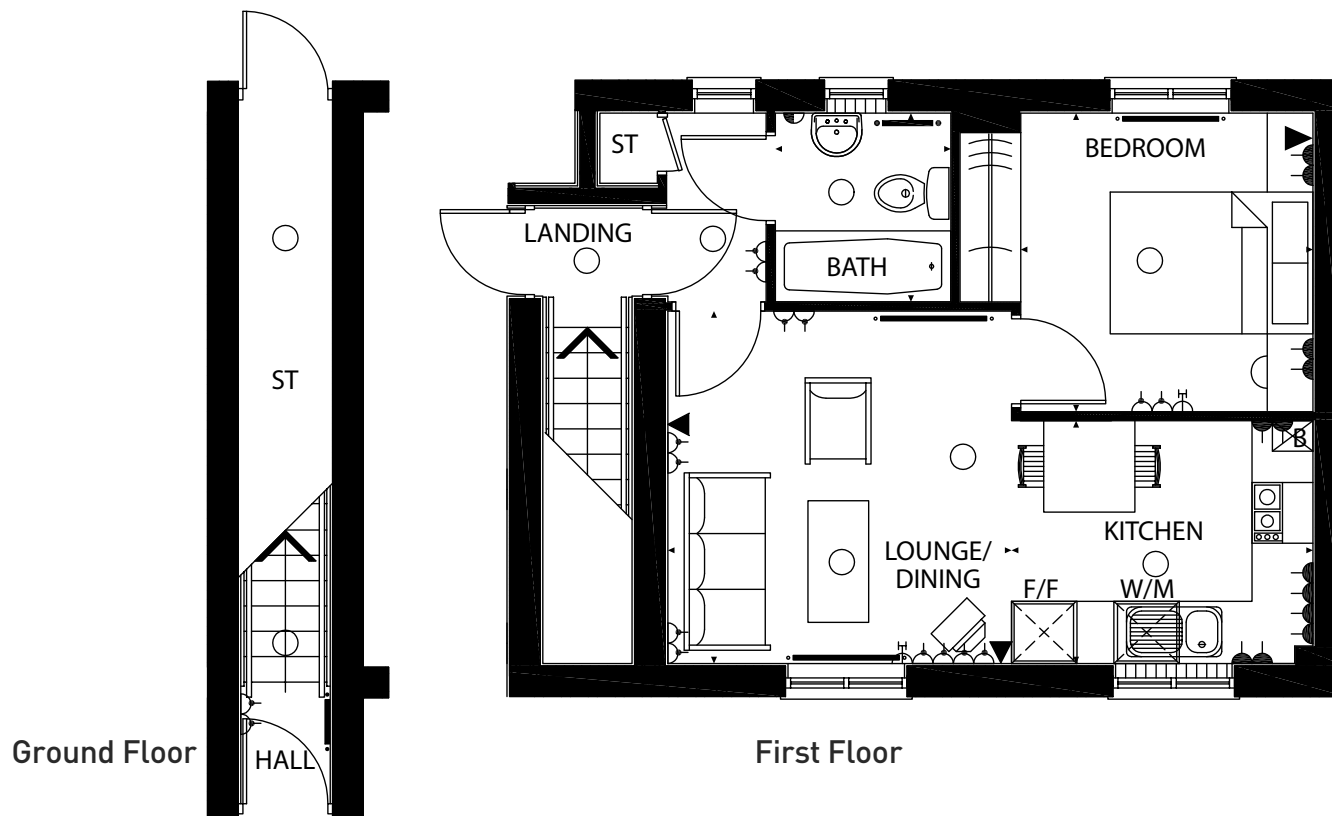
Computer generated image shows The Midhurst coach house at Hawthorn Meadows.
Please note; elevational treatments may vary.



BARRATT
HOMES
find the one

The Midhurst

Plots 70, 82, 265, 495,
497 & 499



- DOUBLE SWITCHED SOCKET OUTLET - 500mm ABOVE FLOOR LEVEL
- SWITCH SOCKET OUTLET ABOVE WORKTOP
- DOUBLE SWITCHED SOCKET OUTLET ABOVE WORKTOP
- T.V. AERIAL SOCKET & COAXIAL CABLE
- TELEPHONE OUTLET POINT
- PENDANT LIGHT
- RADIATOR
- BOILER
- F/F FRIDGE FREEZER SPACE
- W/M WASHING MACHINE SPACE
- STORE
- SOCKET OUTLET BELOW WORKTOP
- SWITCHED UNIT FOR HOB / EXTRACTOR HOOD / BOILER
- SHAVER SOCKET

IMPORTANT NOTICE: These particulars are for illustration only. We operate a policy of continuous product development and individual features such as windows, garages and elevational treatments may vary from time to time. Consequently these particulars should be treated as general guidance only and cannot be relied upon as accurately describing any of the Specified Matters prescribed by any Order made under the Property Misdescriptions Act 1991. Nor do they constitute a contract, part of a contract or a warranty. Dimensions should not be used for carpet sizes, appliance spaces or items of furniture. Purchasers furniture may be of a different size to that indicated. Some properties may be handed, please ask for details.

Approximate dimensions

Lounge/Dining	4135 x 3475mm	(13'6" x 11'4")
Kitchen	2895 x 2400mm	(9'9" x 7'10")
Bedroom	2945 x 3483mm	(9'11" x 11'4")
Bathroom	1725 x 1850mm	(5'8" x 6'1")



The Millford

Hawthorn Meadows, Whippingham,
Isle of Wight

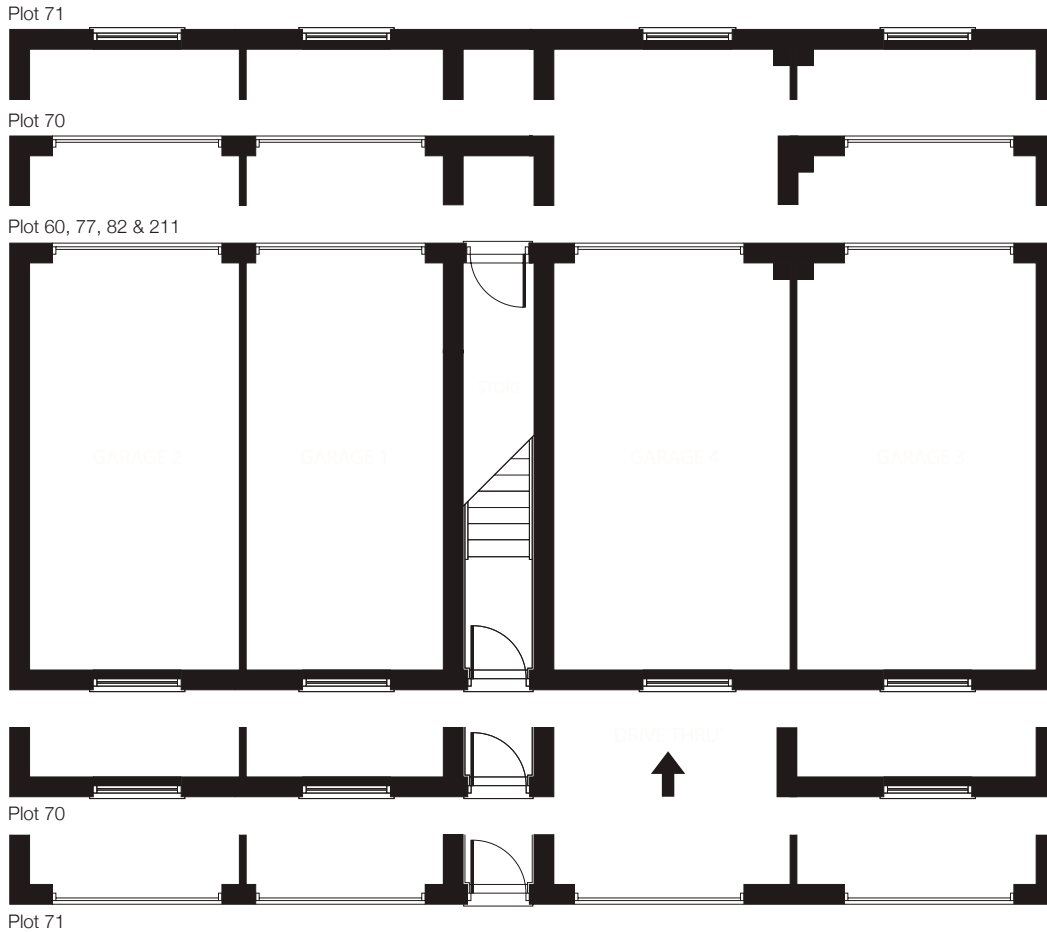


BARRATT
HOMES

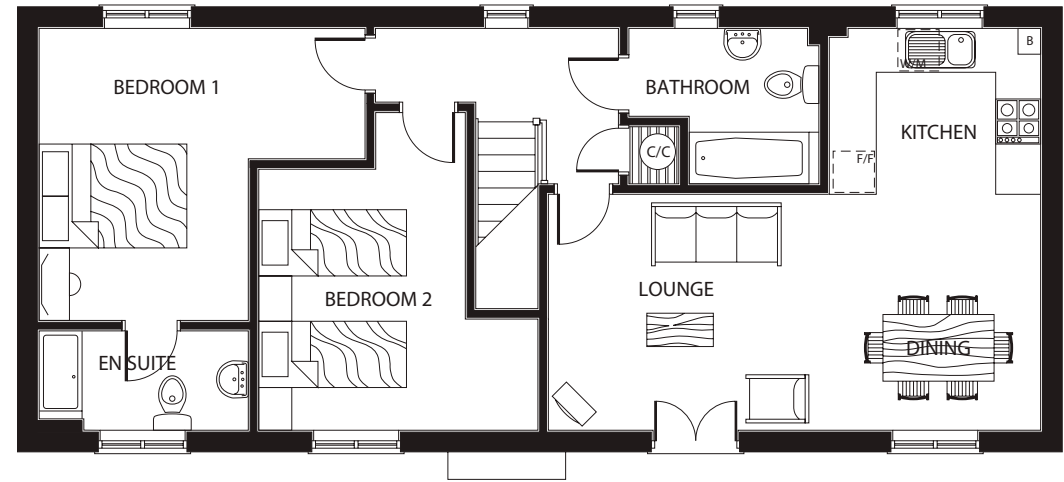
built around you

Artists impression is a guide to the Millford House Type.
Please ask for more details.

The Millford Hawthorn Meadows, Whippingham, Isle of Wight



GROUND FLOOR



FIRST FLOOR (Approximate dimensions)

	Imperial	Metric
LOUNGE/DINER	14'5" x 12'11" max's	4400 x 3960 max's
KITCHEN	9'4" x 6'6" max's	2850 x 2000 max's
BEDROOM 1	14'5" x 11'0" max's	4400 x 3360 max's
BEDROOM 2	12'2" x 11'11" max's	3700 x 3650 max's
BATHROOM	8'6" x 6'6" max's	2600 x 2000 max's
EN SUITE	4'7" x 9'3" max's	1420 x 2825 max's

Plot 60 • Plot 70 • Plot 71 • Plot 77 • Plot 82 • Plot 211

Note: Dimensions should not be used for carpet sizes, appliance spaces or items of furniture. Purchasers furniture may be different size to that indicated. Some properties may be handed, please ask for details.

The Richmond

Hawthorn Meadows, Whippingham,
Isle of Wight

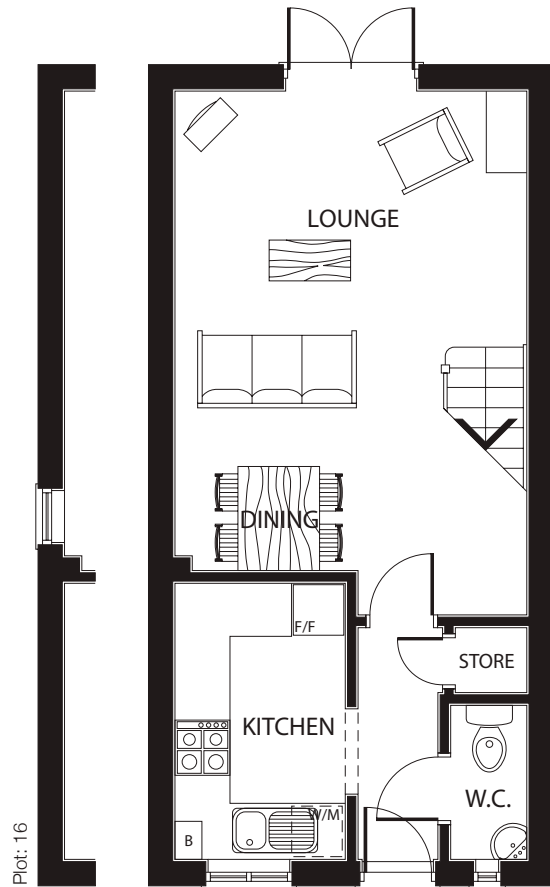


BARRATT
HOMES

built around you

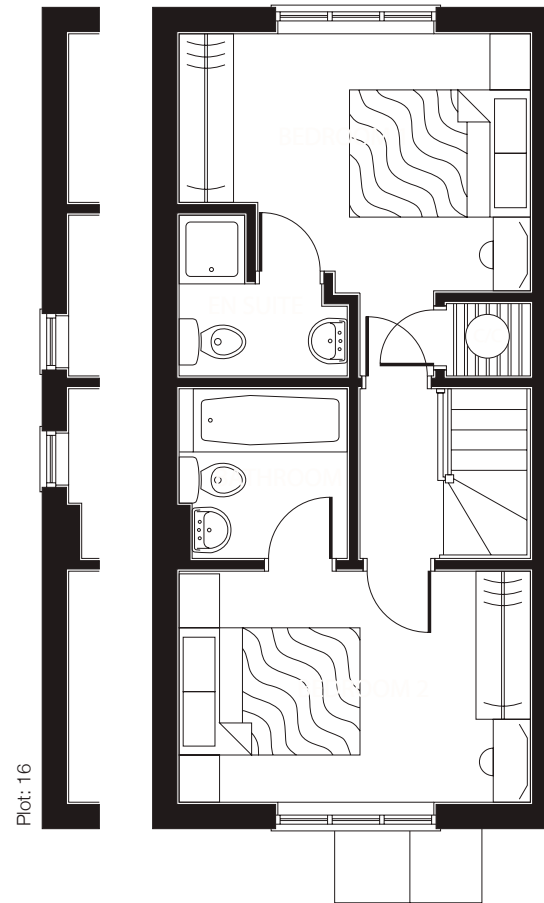
Artists impression is a guide to the Richmond House Type.
Please ask for more details.

The Richmond Hawthorn Meadows, Whippingham, Isle of Wight



GROUND FLOOR (Approximate dimensions)

	Imperial	Metric
LOUNGE	18'11" x 12'8" max's	5770 x 3880 max's
KITCHEN	10'0" x 6'4" max's	3050 x 1930 max's



FIRST FLOOR (Approximate dimensions)

	Imperial	Metric
BEDROOM 1	12'8" x 9'3" max's	3875 x 2850 max's
EN SUITE	5'11" x 6'1" max's	1870 x 1875 max's
BEDROOM 2	12'8" x 8'4" max's	3875 x 2550 max's
BATHROOM	6'1" x 6'3" max's	1875 x 1900 max's

Plot 16 • Plot 27 • Plot 28 • Plot 29 • Plot 31 • Plot 32 • Plot 40 • Plot 48 • Plot 49 • Plot 51
Plot 52 • Plot 53 • Plot 54 • Plot 85 • Plot 86 • Plot 92 • Plot 97 • Plot 98 • Plot 204 • Plot 205

Note: Dimensions should not be used for carpet sizes, appliance spaces or items of furniture. Purchasers furniture may be different size to that indicated. Some properties may be handed, please ask for details.

The Thornton

Hawthorn Meadows, Whippingham,
Isle of Wight

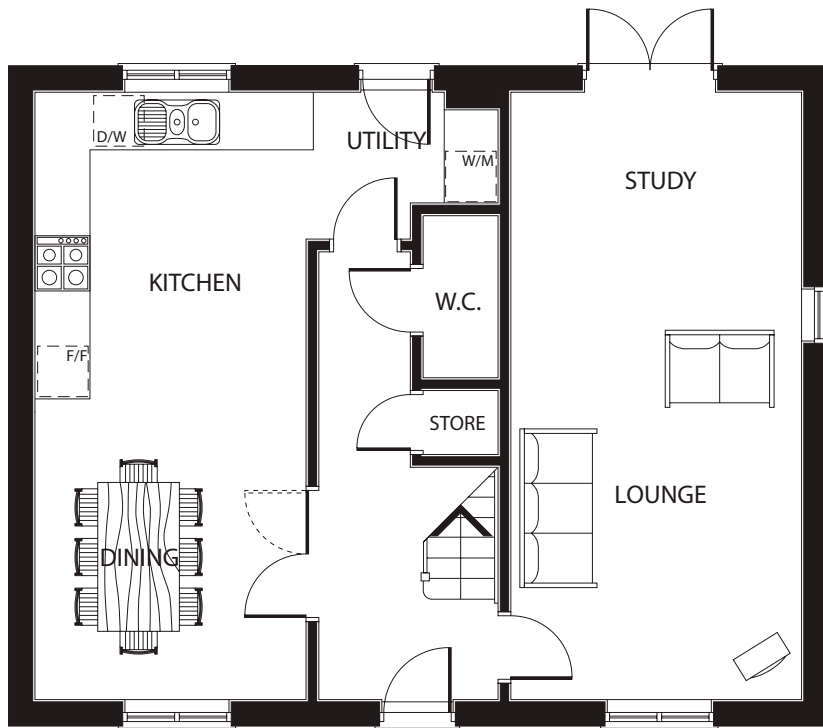


BARRATT
HOMES

built around you

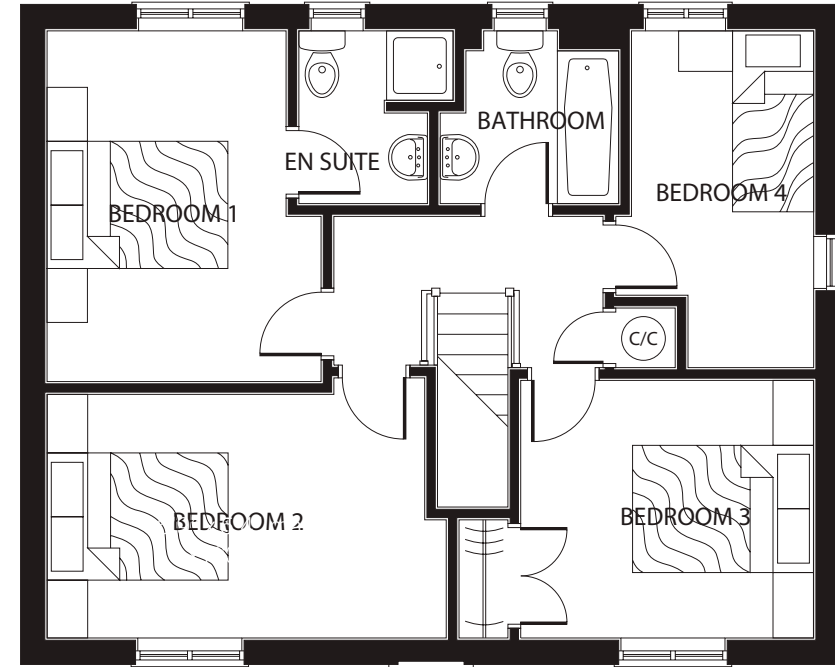
Artists impression is a guide to the Thornton House Type.
Please ask for more details.

The Thornton Hawthorn Meadows, Whippingham, Isle of Wight



GROUND FLOOR (Approximate dimensions)

	Imperial	Metric
LOUNGE/STUDY	21'7" x 10'4" max's	6600 x 3150 max's
KITCHEN/DINING	9'8" x 21'6" max's	2950 x 6600 max's
UTILITY	6'4" x 5'4" max's	1940 x 1630 max's



FIRST FLOOR (Approximate dimensions)

	Imperial	Metric
BEDROOM 1	12'7" x 9'9" max's	3850 x 2995 max's
EN SUITE	6'3" x 5'8" max's	1900 x 1730 max's
BEDROOM 2	14'3" x 8'8" max's	4350 x 2650 max's
BEDROOM 3	10'9" x 9'3" max's	3270 x 2825 max's
BEDROOM 4	12'0" x 6'7" max's	3660 x 2000 max's
BATHROOM	6'8" x 6'2" max's	2040 x 1900 max's



BARRATT
HOMES

built around you