



123/3 Grange Loan

THE GRANGE | EDINBURGH | EH9 2EA



MURRAY
BEITH
MURRAY

123/3 Grange Loan

THE GRANGE | EDINBURGH | EH9 2EA

3DunardHouse, 123GrangeLoanisamagnificent and spacious drawing room apartment within a 19th Century villa. This tastefully decorated ground floor flat retains many period features and is set within well-maintained landscaped grounds with allocated parking.

Accommodation: Welcoming hall with storage cupboard; generous sitting room with a dual aspect, original cornicing and working shutters; breakfasting kitchen with a range of wall mounted and floor standing units; large double bedroom with built-in-wardrobes; modern shower room with a white four-piece suite comprising WC, wash hand basin, bidet and shower cubical.

Immaculate garden grounds with allocated parking space, with further visitors parking available. Zoned parking permit and metered parking on the surrounding streets, the property falls within Priority Parking area B1.

Gas central heating; Double glazing.

From 1 February 2022, residential properties in Scotland are required by law to have installed a system of inter-linked smoke alarms and heat detectors, together with carbon monoxide detectors if required (the "interlinked-system"). No warranty is given that any interlinked system has been installed in this property and interested parties should make their own enquiries.



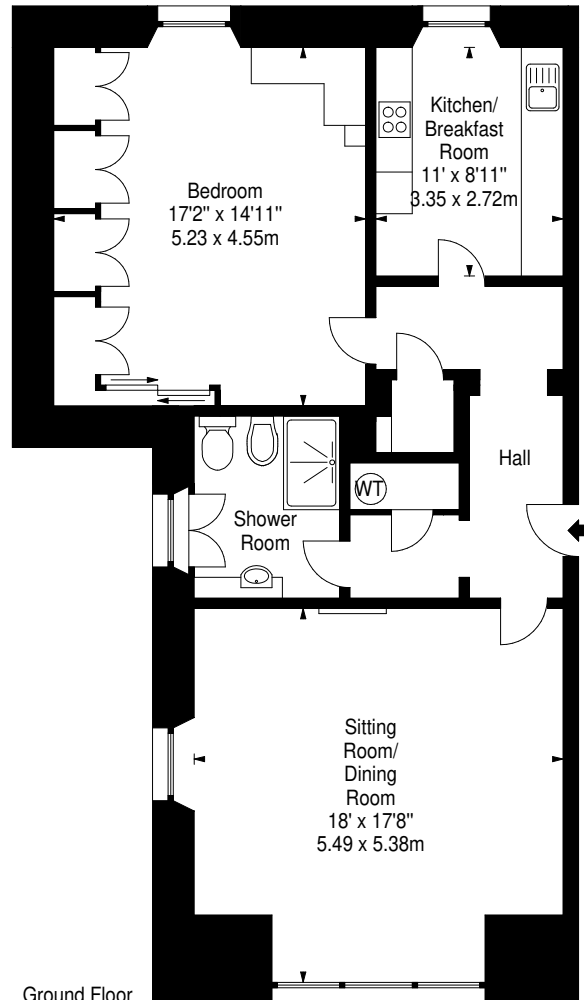


Grange Loan,
Edinburgh,
Midlothian, EH9 2EA



SquareFoot

Approx. Gross Internal Area
907 Sq Ft - 84.26 Sq M
For identification only. Not to scale.
© SquareFoot 2025



Location

The Grange is one of Edinburgh's most sought-after residential areas, typified by large, late-Victorian, stone-built villas and situated approximately one and a half miles to the south of the city centre. The area features a range of excellent local amenities. A more comprehensive range can be found at Cameron Toll and nearby Morningside boasts both a Waitrose and Marks and Spencer Simply Food, as well as a great selection of restaurants, bistros, bars and deli cafes, and numerous boutique shops. A wide selection of pre-school, primary and secondary schooling options are available nearby, including George Watson's College, George Heriot's School and Merchiston Castle School. There are excellent leisure facilities close by, with the Waverly Lawn Tennis, Squash & Sports Club, the Warrender Swim Centre and the Carlton Cricket Club all a few minutes away. The Hermitage of Braid, Holyrood Park and Blackford hills provide delightful walks to escape the hustle and bustle of city life. Numerous public and private golf courses, including Prestonfield Golf Club, Craigmillar Park and The Wee Braids and Braid Hills Golf Centre are all within easy reach, and also close at hand are the Morningside Library, the Dominion Cinema and the Church Hill Theatre. The city centre is easily accessible, with bus connections available from Grange Road, and the Edinburgh Bypass leads to the motorway network of central Scotland and Edinburgh's international airport.



MURRAY
BEITH
MURRAY



Murray Beith Murray | 3 Glenfinlas Street | Edinburgh | EH3 6AQ

T: 0131 225 1200 F: 0131 225 4412 E: property@murraybeith.co.uk W: www.murraybeith.co.uk

The following note is of crucial importance to intending viewers and/or purchasers of the property.

1. These particulars are prepared for the guidance of prospective purchasers and although they are intended to give a fair overall description of the property they are not intended to constitute part of an offer or contract. Intending purchasers must satisfy themselves by inspection or otherwise. 2. No information in these particulars should be considered to be a statement of the condition of the property or of any services, equipment or facilities. 3. Photographs appearing in the brochure were taken in 2025 and indicate only parts of the property. No assumption should be made in respect of parts of the property which are not shown in the photographs. 4. Purchasers should not assume that any planning, building regulations or other consents have been obtained for alterations or changes of use. Any intending purchasers must verify the position themselves. 5. Descriptions of the property contained in these particulars are subjective. Any areas, measurements or distances stated in these particulars are approximate only. Intending purchasers must satisfy themselves by inspection or otherwise as to the correctness of each of them. 6. No person in the employment of Murray Beith Murray has any authority to make or give any representation or warranty whatever in relation to this property nor to enter into any contract relating to the property. 7. No responsibility can be accepted for any expenses incurred by intending purchasers in inspecting properties which have been sold or withdrawn. 8. Interested parties are requested to register their interest through their solicitors so that they may be informed should a closing date be set for the receipt of offers. 9. The seller shall not be obliged to accept the highest offer or any offer.

All offers should be submitted to Murray Beith Murray in writing and in accordance with Section 3 of the Requirements of Writing (Scotland) Act 1995.