

STAGE

30 Little Russell Street,
Bloomsbury,

London, WC1

2,306 sq ft / 214.23 sq m

A newly refurbished workspace located in
an idyllic Bloomsbury setting

SELF-CONTAINED WORKSPACE

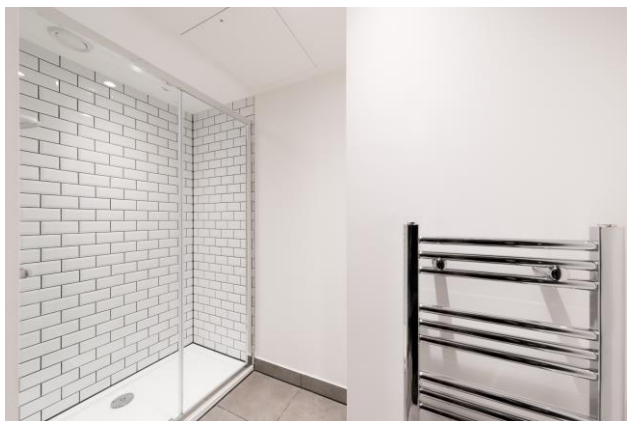
FULLY FITTED AND FURNISHED

CREATIVE AND COLLABORATIVE STYLE



stage-re.co.uk

STAGE

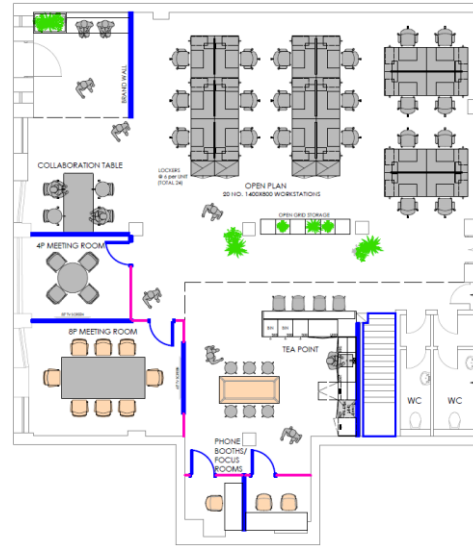


Amenities

- Self-contained fully fitted workspace
- 20 x workstations
- 1 x 8-person meeting room
- 1 x 4-person meeting room
- 2 x focus / call booths
- Open plan kitchenette and breakout
- Exposed services
- New LED Lighting
- Demised WCs
- Fibre connectivity
- Access to bike storage and showers
- EPC - B



Floor Plan



Indicative only. Not to scale.

Floor Areas

Floor	Sq ft	Sq m	Workstations
GF	2,306	214.23	20

Location & Connectivity



- Tottenham Court Road 6 mins
- Holborn 7 mins
- Russel Square 10 mins

Outgoings PSF

Guide Rent	Business Rates	Service Charge	Total
£65.00	£21.60	TBC	TBC

Term

New lease is available direct from the landlord on terms by arrangement

Simon Lee:

07769745449

simon@stage-re.co.uk

@stagerere

@stagerelondon

Max Chalk: 07522867157

max@stage-re.co.uk

@stage_re_spotlight