

STAGE

8-9 Well Court,
London, EC4

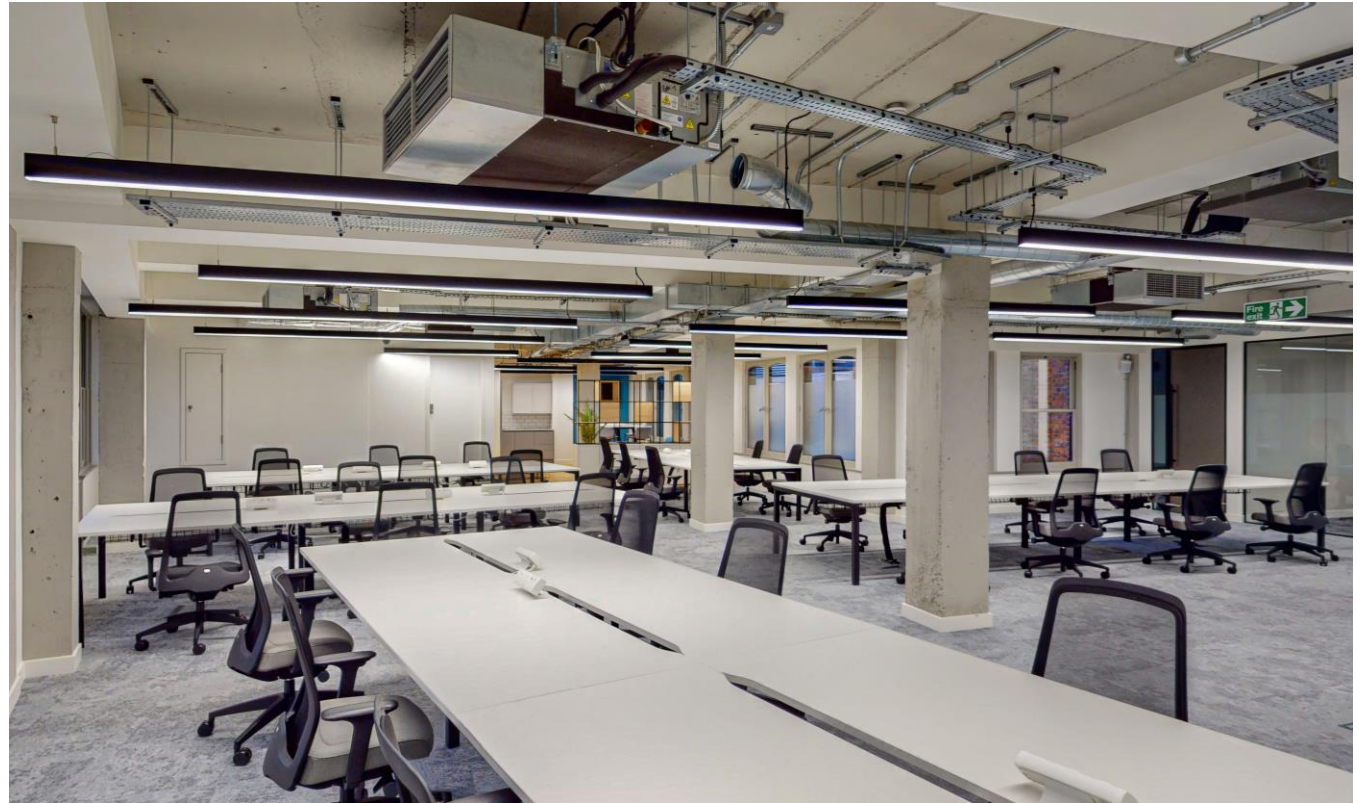
2,509 sq ft/ 233.10 sq m

Fully fitted plug & play workspace located
in the heart of The City

COMPREHENSIVELY REFURBISHED BUILDING

FULLY FITTED AND FURNISHED WORKSPACE

PRIME CITY LOCATION



stage-re.co.uk

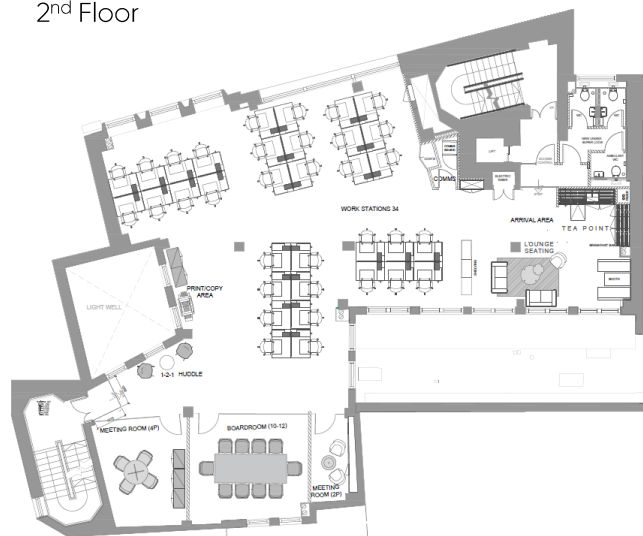
Amenities

- 34 x workstations
- 1 x 12-person board room
- 1 x 4-person meeting room
- Kitchenette
- Demised WCs
- Fibre connectivity
- Raised access floors
- Exposed services
- Passenger lift
- Refurbished building reception and new end of trip facilities
- EPC – B



Floor Plan

2nd Floor



Indicative only. Not to scale.



Floor Areas

Floor	Sq ft	Sq m	Workstations
2 nd floor	2,509	233.10	34
Total	2,509	233.10	34

Location & Connectivity



[Google Maps](#)



[What Three Words](#)



Mansion House

2 mins



St Pauls

3 mins



Bank

4 mins

Outgoings (all-inclusive: rent, rates, service charge, insurance & dilaps)

£112.33 per sq ft

£23,487 per month

£281,836 per annum

Term

A new flexible lease is available for a term of 36 months plus direct from the landlord

Simon Lee: 07769745449

simon@stage-re.co.uk

Max Chalk: 07522867157

max@stage-re.co.uk

@stagere

@stagerelondon

@stage_re_spotlight