

STAGE

Frith & Bateman,
53 Frith Street, Soho,
London, W1

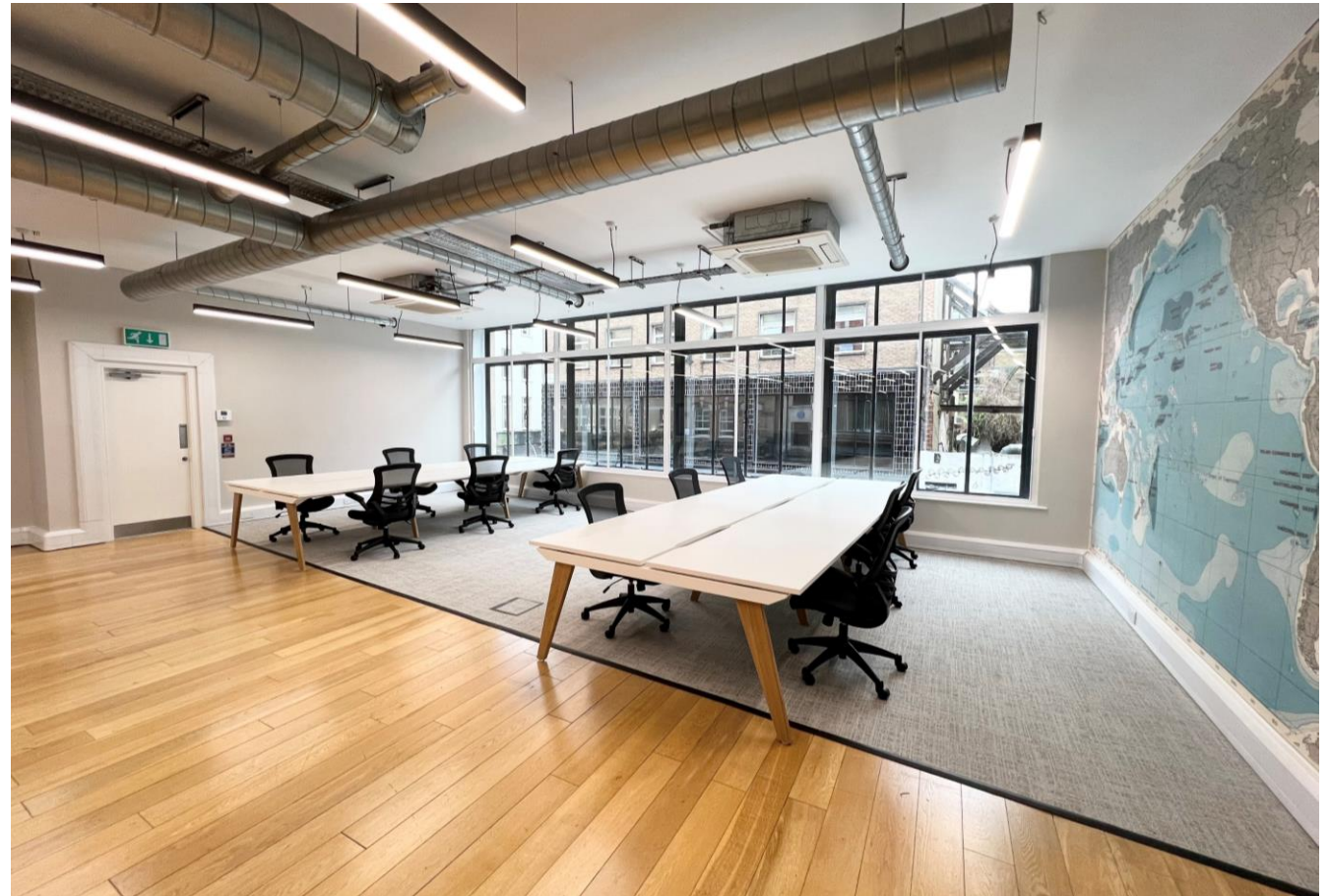
1,260 sq ft/ 117.06 sq m

Newly refurbished Fully Fitted workspaces
available on flexible terms until March 2025

PRIME SOHO LOCATION

CREATIVE STYLE WORKSPACE

FLEXIBLE LEASE TERMS AVAILABLE



stage-re.co.uk

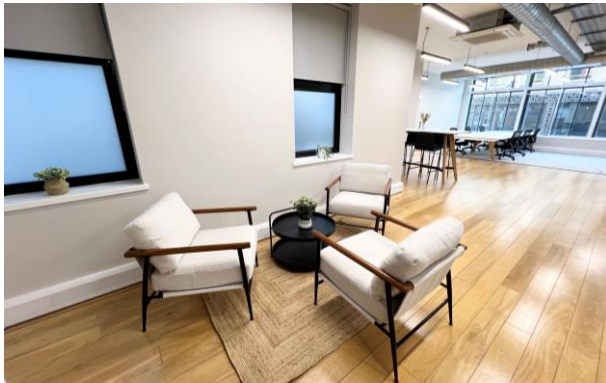
STAGE



stage-re.co.uk

Amenities

- 12 x workstations
- 1 x 6-person meeting room
- Kitchenette and breakout areas
- 3.55m floor to ceiling height
- Excellent natural light throughout
- VRF heating and cooling
- 6 person passenger lift
- WC's and showers on every floor
- Great local connectivity
- Quick access to the Elizabeth line



Floor Plan



Indicative only. Not to scale.

Floor Areas

Floor	Sq ft	Sq m	Workstation (approx.)
1st Frith	1,260	117.06	12

Location & Connectivity



- Leicester Square 5 mins
- Tottenham Court Road 5 mins
- Piccadilly Circus 7 mins

Outgoings ^{PSF}

Guide Rent	Business Rates	Service Charge	Total
£85.00	£28.00	£15.00	£128.00

Term

New leases are available direct from the landlord on terms by arrangement

Simon Lee:

07769745449

simon@stage-re.co.uk

@stagere

@stagerelondon

Max Chalk: 07522867157

max@stage-re.co.uk

@stage_re_spotlight