



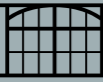
# Charlotte

# Mews



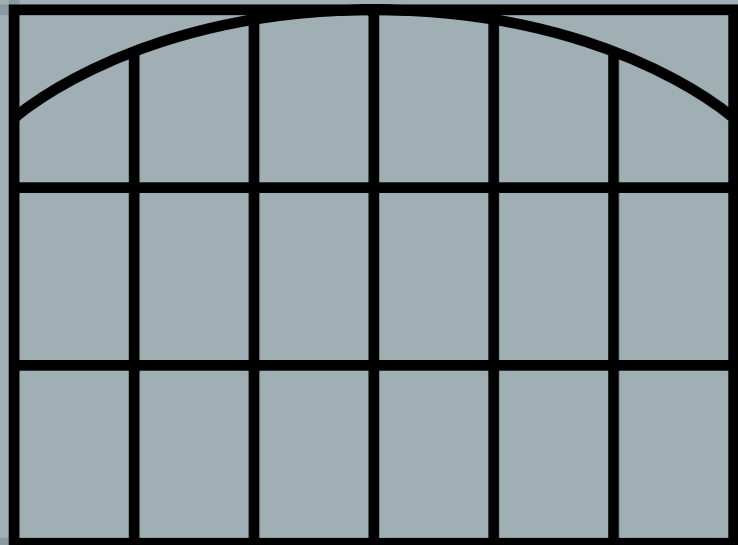
7,500 sq ft self-contained industrial style mews building  
available to pre let.



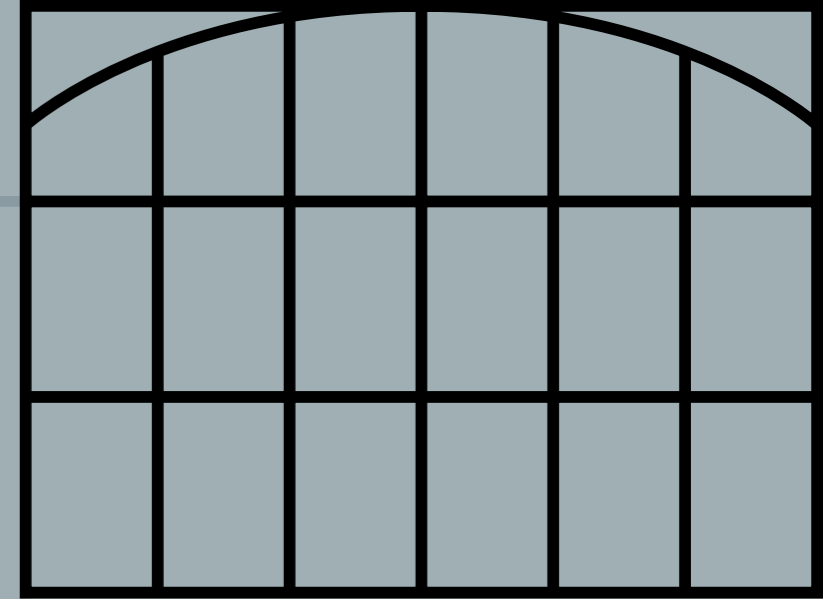


# Warehouse Chic

7-10 Charlotte Mews are two interconnected warehouse style buildings set within a charming cobbled mews, just off Charlotte Street in fashionable Fitzrovia. The building offers a creative occupier a great opportunity to be self-contained, enabling them to curate their own unique workspace environment.







tech  
creative  
media  
design







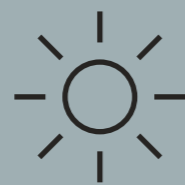
# The Detail



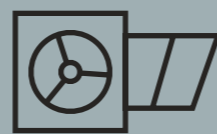
Industrial style workspace



Wooden floors



Excellent natural light



Exposed services



3m+ ceiling heights



Exposed brickwork



Partitioned meeting rooms



Fitted kitchenette



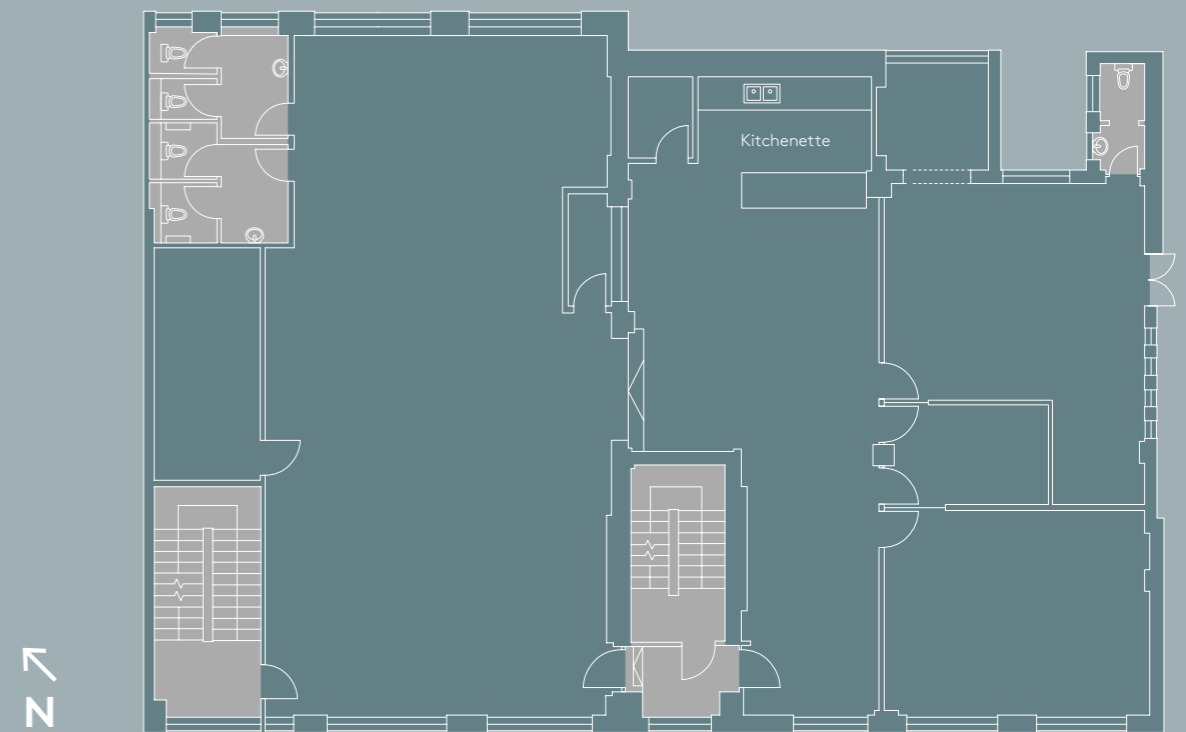
# Floor Areas

Floor	sq ft	sq m
2nd	1,478	137.3
1st	2,868	266.4
Ground	3,162	293.8
<b>Total</b>	<b>7,508</b>	<b>697.5</b>

A further c.3,000 sq ft over part 2nd and 3rd floors can be made available from December 2023.

## 1st

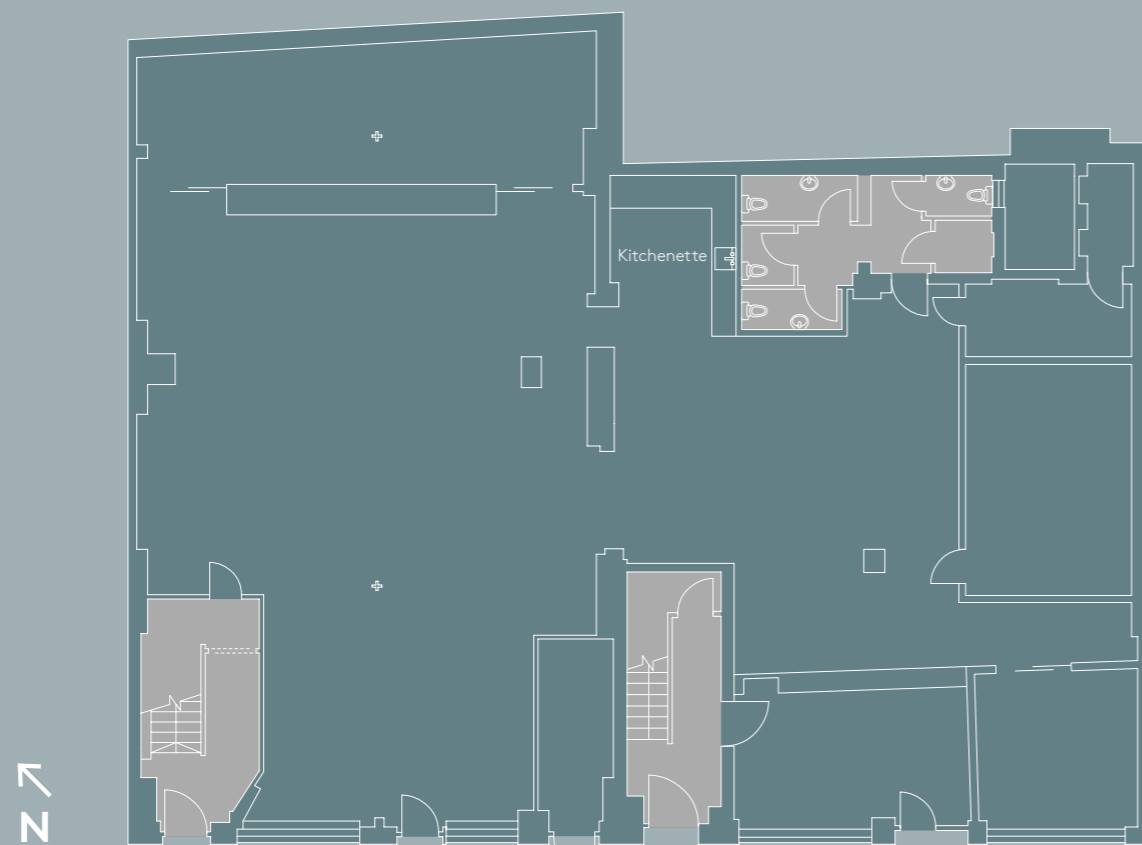
2,868 sq ft  
266.4 sq m



CHARLOTTE MEWS

## G

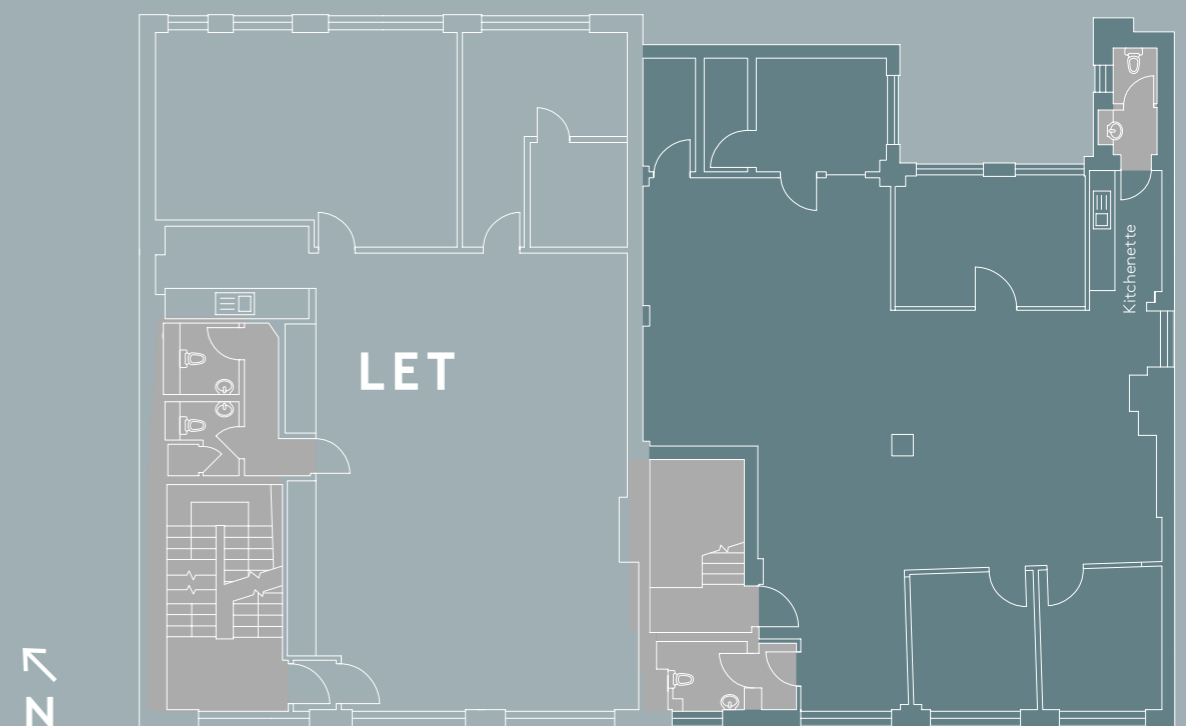
3,162 sq ft  
293.8 sq m



CHARLOTTE MEWS

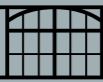
## 2nd

1,478 sq ft  
137.3 sq m



CHARLOTTE MEWS

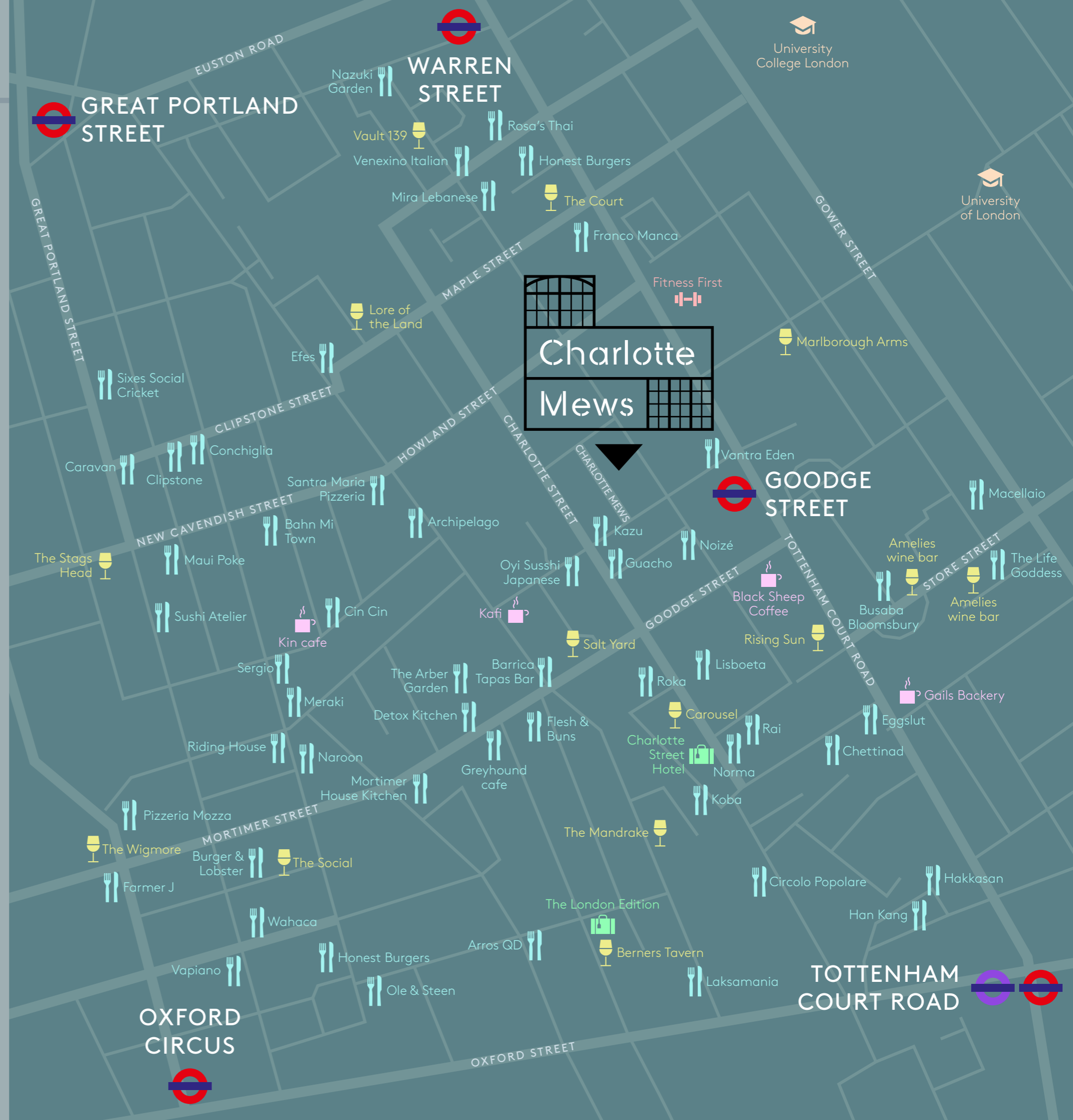




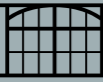
# Perfectly Placed

This self-contained mews style workspace building located in Fitzrovia, is perfectly positioned to benefit from a range of exciting and vibrant retail, restaurants and cafés offering a taste of something for everyone.

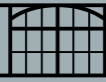
Charlotte Mews is incredibly well connected as it has Goodge Street station (Northern line) on its doorstep. It is also less than a 10 minute walk to Tottenham Court Road station providing access to the Elizabeth line, in addition to the Central and Northern lines.











Please contact RX London and Stage RE for further information



**Lois Bond**

lois.bond@rx.london  
07773 258589

**Simon Lee**

simon@stage-re.co.uk  
07769 745449

**Imogen Purvis**

imogen.purvis@rx.london  
07377 978348

**Max Chalk**

max@stage-re.co.uk  
07522 867157

RX London and Stage RE give notice that these particulars are set out as a general outline only for the guidance of intending Purchasers or Lessees and do not constitute any part of an offer or contract. Images contained within the particulars have been digitally enhanced, removing furniture, for marketing purposes. Details are given without any responsibility and any intending Purchasers, Lessees or Third Party should not rely on them as statements or representations of fact, but must satisfy themselves by inspection or otherwise as to the correctness of each of them. No person employed or engaged by RX London and Stage RE has any authority to make any representation or warranty whatsoever in relation to this property. February 2023.

