

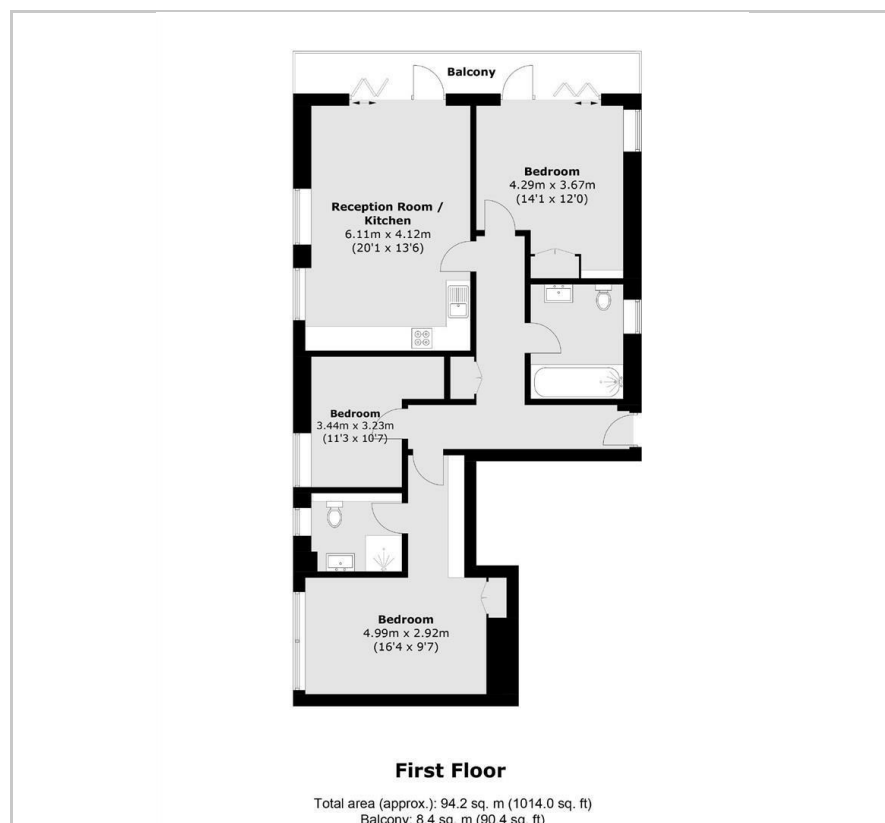
14 119 Portland Road

, Norwood Junction, SE25 4UN

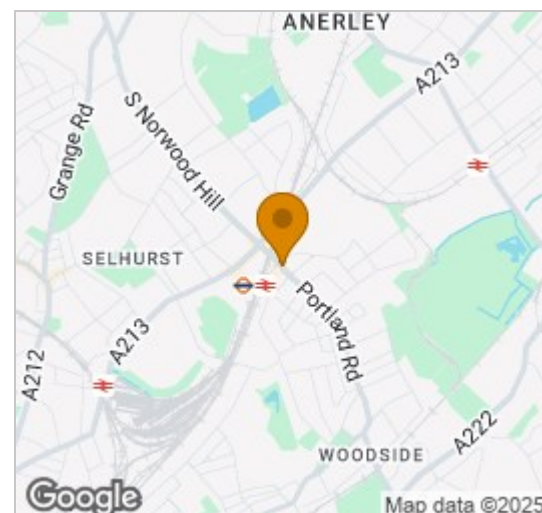
£2,150 Per month



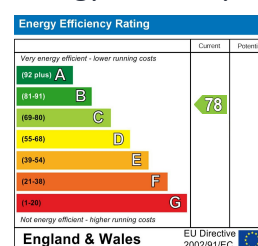
## Floor Plan



## Area Map



## Energy Efficiency Graph



## Viewing

Please contact our Head Office Office on 07561471669 if you wish to arrange a viewing appointment for this property or require further information.

- Three Bedrooms (Two Doubles)
- Unfurnished
- Available 1st April
- New Private Development
- Balcony
- Moments From Norwood Junction
- 12 Minute Train To London Bridge



Large lateral, never been lived in before, new and expertly crafted 1014 sqft / 94.2 sqm 3 bedroom, 2 bathroom apartment available to rent unfurnished with Three Sixty Property.

A well proportioned three bedroom, two bathroom apartment with balcony on the first floor of this newly built development with lift access.

Set in the heart of South Norwood, this boutique development has only 19 units offering a mixture of 1, 2 & 3 bedroom apartments. Eloise House is set in a thriving local community with an abundance of shops close by, Norwood Junction is 0.2 miles away with a 12 minute train ride into London Bridge.

\*Photos are of Show apartment\*



These particulars, whilst believed to be accurate are set out as a general outline only for guidance and do not constitute any part of an offer or contract. Intending purchasers should not rely on them as statements of representation of fact, but must satisfy themselves by inspection or otherwise as to their accuracy. No person in this firm's employment has the authority to make or give any representation or warranty in respect of the property.

4-5 Gough Square, London, EC4A 3DE

Tel: 07561471669 Email: [tim@threesixtyproperty.co.uk](mailto:tim@threesixtyproperty.co.uk) <https://www.threesixtyproperty.co.uk>