



PROPERTY



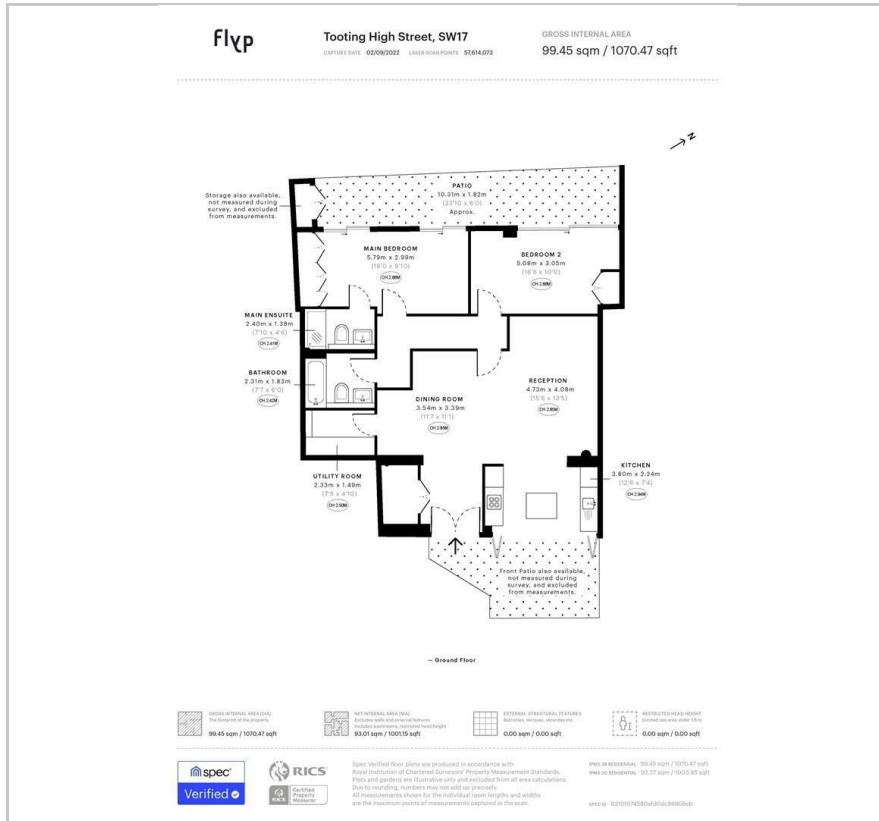
28 Tooting High Street

, London, SW17 0RG

£720,000



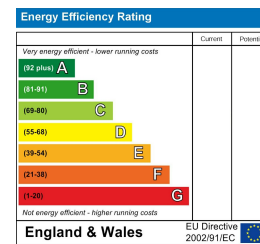
Floor Plan



Area Map



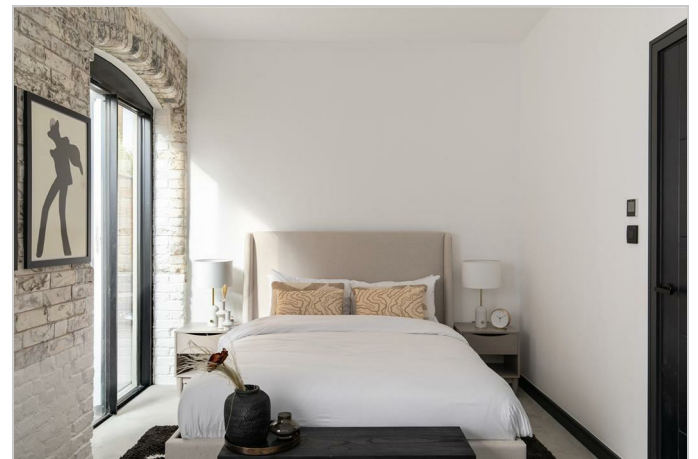
Energy Efficiency Graph



Viewing

Please contact our Head Office Office on 07561471669 if you wish to arrange a viewing appointment for this property or require further information.

- Gated development
- Open plan reception/kitchen area
- Front and rear patio
- Main bedroom with en-suite bathroom



Bateman's Yard final release, brought to you by 360 Property. You'll never grow tired of the delights that the Bateman's Yard has to offer. Only a short minute's walk to Tooting Broadway station, you'll soon have access to a 24 hour Northern Line service as well as a quick commute to central London.

Flat 2 is a 2 bedroom, 2 bathroom, 1070.47sqft apartment with open plan living and two outside areas to call your own. Exposed brick and high ceilings make this space feel very unique.

Along with a short distance to central London, there are also plenty of things to do in your own backyard. From cafes to pubs to restaurants to markets, Batemans Yard is close to it all. Tooting Market is on your doorstep - running for 80 years, Tooting Market is South London's multi award winning and premier outdoor market.

Not to be outdone by the markets, Batemans Yard is home to some amazing indoor spaces such as its curry houses, bustling high street and Hayman's Distillery.



These particulars, whilst believed to be accurate are set out as a general outline only for guidance and do not constitute any part of an offer or contract. Intending purchasers should not rely on them as statements of representation of fact, but must satisfy themselves by inspection or otherwise as to their accuracy. No person in this firm's employment has the authority to make or give any representation or warranty in respect of the property.

4-5 Gough Square, London, EC4A 3DE

Tel: 07561471669 Email: tim@threesixtyproperty.co.uk www.threesixtyproperty.co.uk