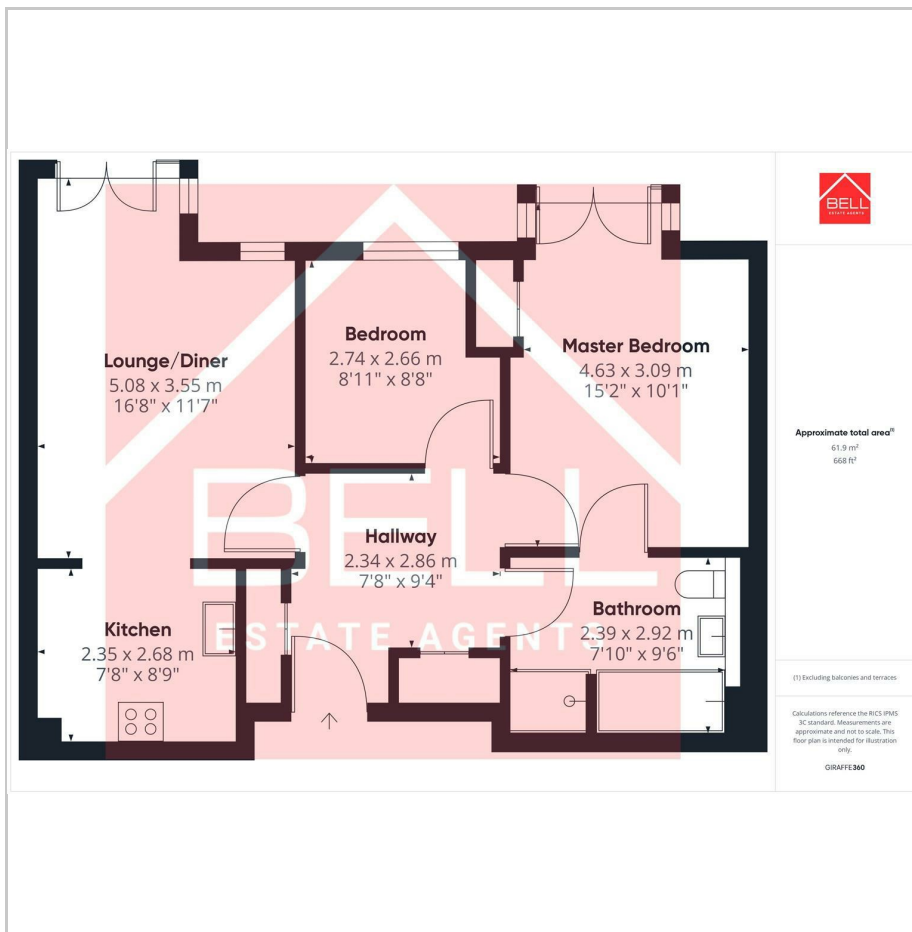




22 Eslington Mews, Dryden Road, Gateshead, NE9 5DW

Offers Over £112,500

- No Onward Chain
- Open Plan Lounge/Kitchen/Diner
- Secure Communal Entrance With Elevator
- Modern Fitted Kitchen
- Awaiting EPC Rating
- Purchasers Must Be Over 55 Years Old
- Jack & Jill Bathroom
- Two Juliette Balconies
- Situated On the Second Floor
- Viewings Highly Recommended



THE PROPERTY

Bell Estate Agents are pleased to welcome to the market this well presented Over 55's retirement apartment situated on the second floor within the highly regarded Eslington Mews...

This secure retirement complex offers generous living space throughout including a secure communal entrance and intercom system. The internal accommodation briefly comprises of an entrance hallway with two excellent size storage cupboards, and open plan living space with fitted kitchen including modern integrated appliances. Completing the layout are two well proportioned bedrooms, the largest of which is a generous size double room. The properties bathroom is jack and jill style with a white three piece suite, separate shower cubicle. The bathroom can be accessed from both the master bedroom and hallway. Viewings are highly recommended.

Originating in the 16th century Low Fell has quickly developed into one of the more popular of the two dozen or so villages which now comprise the Metropolitan Borough of Gateshead. The Durham Road area has now become a vibrant commercial hub with thriving shops, bars and restaurants as well as some banks and small offices. Whilst also offering it's own running, cricket and rugby clubs. There are also a range of highly regarded local schools, demand for properties increases to grow as more buyers look to move into the area. The area also offers excellent links to the A1, Metrocentre and Team Valley for commuters.

Energy Efficiency Rating		
	Current	Potential
Very energy efficient - lower running costs		
(92 plus) A		
(81-91) B		
(69-80) C		
(55-68) D		
(39-54) E		
(21-38) F		
(1-20) G		
Not energy efficient - higher running costs		
England & Wales	EU Directive 2002/91/EC	

