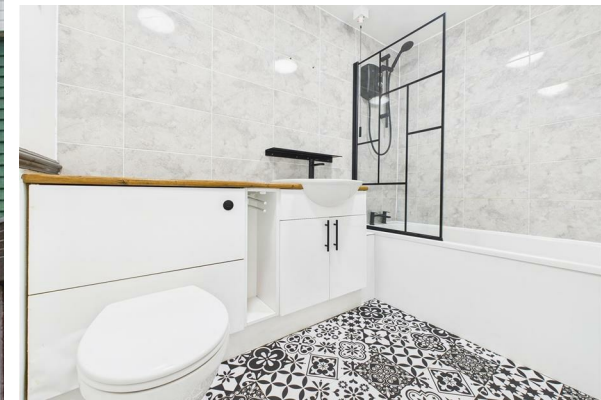




FOR SALE

31 Ashford, Gateshead, Tyne And Wear, NE9 6SG

Offers Over £109,950





- Move-in ready three-bedroom semi-detached home – perfect for first-time buyers
- Quiet pedestrianised walkway location with front and rear outdoor space
- Spacious living room with front garden views and neutral décor
- Modern kitchen/diner plus a separate utility room for added convenience
- Three well-proportioned bedrooms with scope to personalise
- Contemporary family bathroom
- Split-level rear yard – ideal for relaxing, entertaining, or adding your own touch
- Gated rear access and ample on-street parking nearby



## THE PROPERTY

Ideal First-Time Buy – Move-In Ready with Scope to Make Your Own

This deceptively spacious three-bedroom mid-terrace home, ideally situated in a popular and well-connected location. Perfect for first-time buyers, this property is ready to move straight into, offering a blank canvas to personalise and make your own. Set back from the road on a quiet pedestrian walkway, the home offers a great mix of privacy and convenience. The accommodation is well-presented throughout and benefits from gas central heating and double glazing.

The ground floor comprises a welcoming entrance lobby, a spacious extended living room with front garden views, a modern kitchen/diner, and a separate storage space or utility room – perfect for keeping household essentials out of sight. Upstairs, the first-floor landing leads to three well-proportioned bedrooms and a contemporary family bathroom. All bedrooms are neutrally decorated and ready for you to add your personal touch.

To the rear, you'll find a split-level private yard, offering an ideal space for entertaining, relaxing, or even adding a bit of greenery. There is gated access to the rear and ample on-street parking nearby. The front of the home features a small lawned garden.

Located within easy reach of local shops, cafés, schools, and excellent transport links to Gateshead, Newcastle, and the A1, this home is perfectly placed for commuters and local families alike.

Whether you're looking to get onto the property ladder or seeking an investment, this is a home not to be missed. Early viewing is highly recommended.

