

## 91 Willerby Court, Gateshead, NE9 7JG

**Offers Over £32,500**

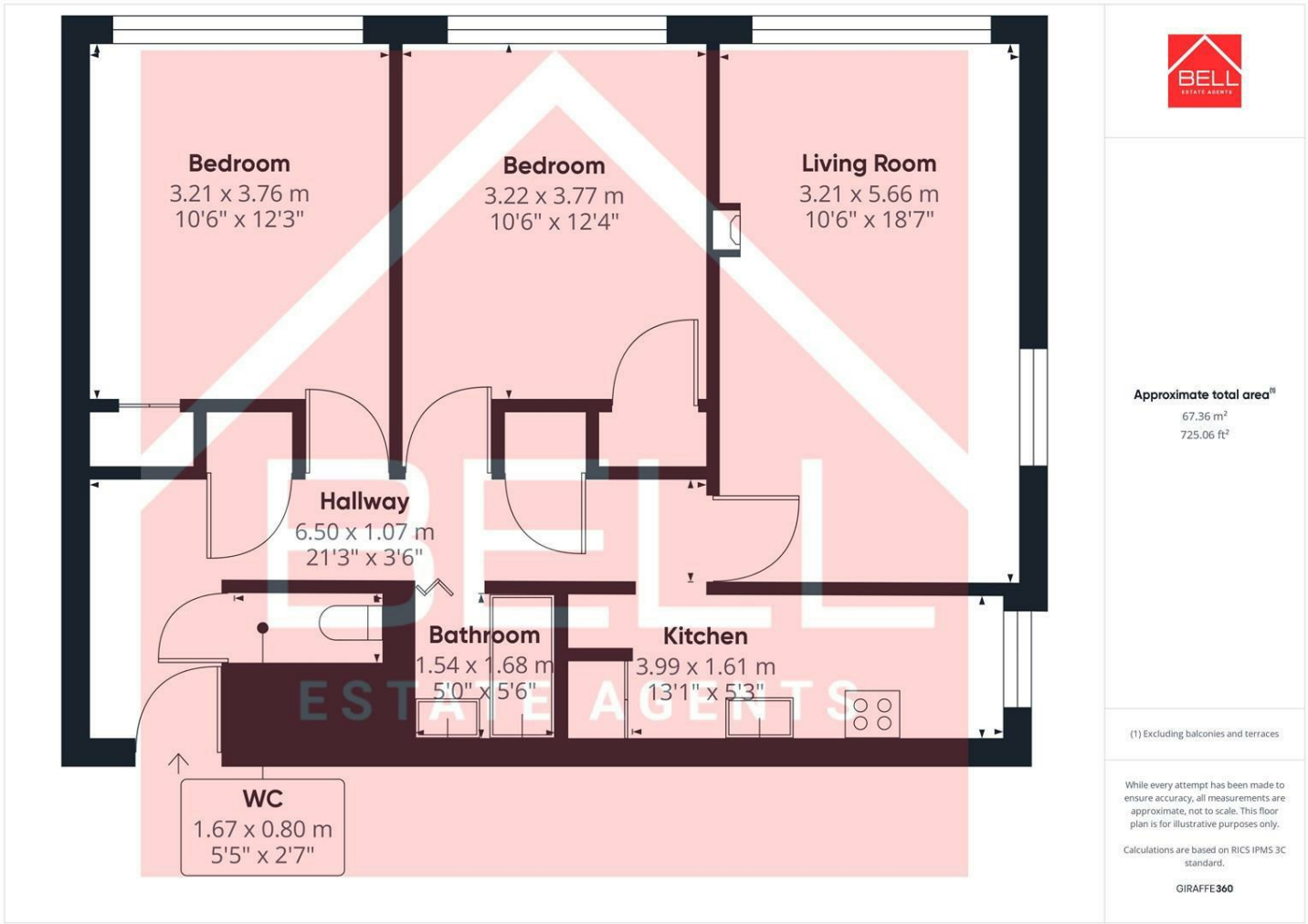
A well presented flat with two double bedrooms and stunning views across the Angel of the North....

Bell Estate Agents are pleased to welcome to the market this well presented ninth floor flat with panoramic views over The Angel of the North. The property benefits from secure communal access with an elevator. The internal accommodation briefly comprises of an entrance hall, two double bedrooms both with integrated storage. The property also has a white family bathroom with separate WC and completing the layout is a fitted kitchen with a range of wall/base units for storage and an open plan lounge/dining space. Viewings are highly recommended.

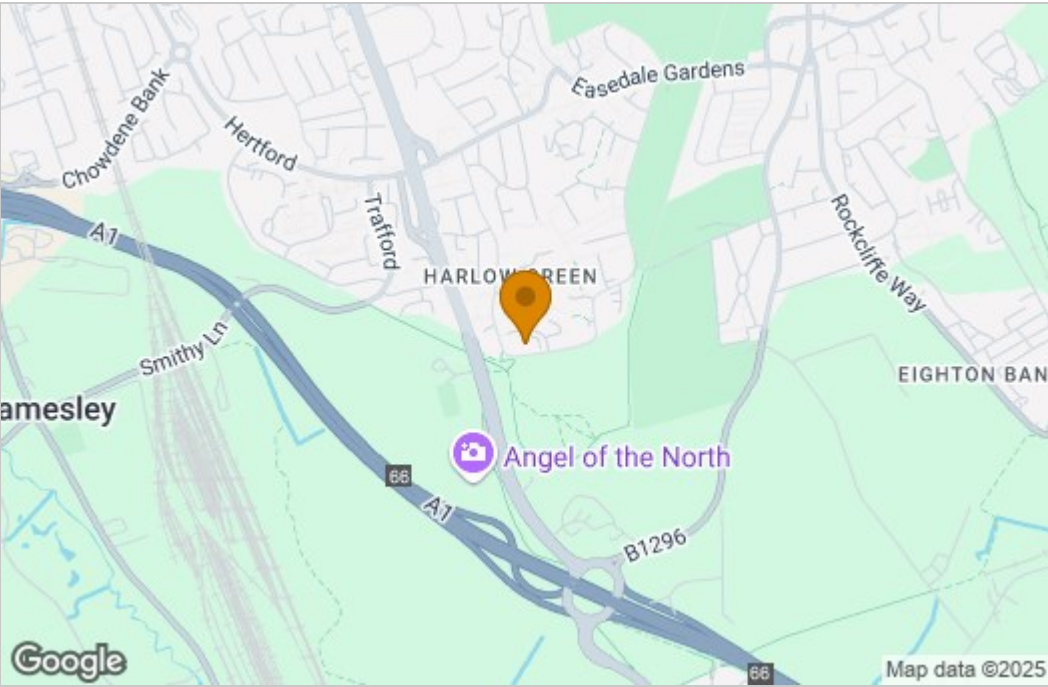
Harlow Green is situated on the outskirts of Low Fell and offers various local schools and shops. The Team Valley Retail Park is also just a short drive away offering extended shopping opportunities. Harlow Green has excellent road links including the A1 and has fantastic commuter links into Newcastle city centre. A frequent bus service is in operation and connects to Gateshead Metro station for easy onward travel.



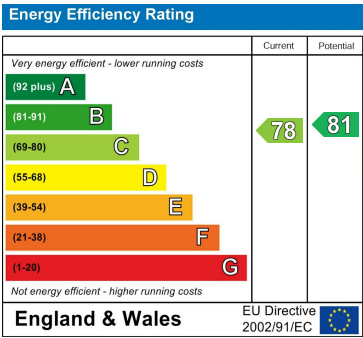
Floor Plan



Area Map



Energy Efficiency Graph



These particulars, whilst believed to be accurate are set out as a general outline only for guidance and do not constitute any part of an offer or contract. Intending purchasers should not rely on them as statements of representation of fact, but must satisfy themselves by inspection or otherwise as to their accuracy. No person in this firm's employment has the authority to make or give any representation or warranty in respect of the property.