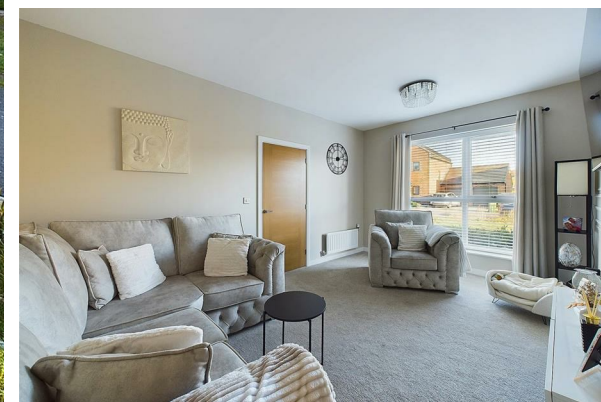




FOR SALE



27 Aspen Close, Birtley, Chester Le Street, DH3 1FE

Offers Over £255,000

- No Onward Chain
- Enclosed Lawned Rear Garden
- Highly Regarded Development
- Ground Floor WC
- EPC Rating - B
- Modern Open Plan Living Area
- Master Bedroom With En-Suite Shower Room
- Driveway Parking
- Dual French Doors To Rear Aspect
- Viewings Highly Recommended

THE PROPERTY

A stylish semi-detached modern starter family home with an open plan living space situated on the highly regarded Aspens development...

Bell Estate Agents are pleased to welcome to the market this well presented starter family home built by Linden Homes. The internal accommodation briefly comprises of an entrance hallway with stairs to the first floor, leading on from this, property then has an excellent size, WC and welcoming lounge with floor to ceiling window. Completing the ground floor level is an open plan living space offering a stylish fitted kitchen with breakfast bar and integrated appliances, dining area and seating space. Whilst also offering ample storage this excellent entertaining area also has dual french doors providing access outside, ideally suited to enjoying the summer months. Moving upstairs to the first floor there are three excellent size double bedrooms, the largest of which has an en-suite shower room. Completing this level is a white three piece family bathroom.

Externally the property benefits from lawned gardens to both the front and rear of the home. Parking is provided via single driveway situated to the front aspect. Viewings are highly recommended.

The Aspens is a modern development of contemporary 2, 3 & 4 houses in Birtley not far from the Angel of the North. Creating a modern community within easy reach of Birtley town centre, with excellent local amenities and views over the beautiful countryside. Located on the outskirts of Birtley which is ideally situated for commuting to Gateshead, Newcastle, Sunderland and Durham. The A1(M) is less than half a mile away, and the A194 (M) and A167 are among the major road links nearby.

