



## 28 Beadnell Drive, Seaham, SR7 7WG

**Offers Over £165,000**

A modern mid terrace starter family home with a rear garden and garage/driveway parking. Situated half a mile from Seaburn beach...

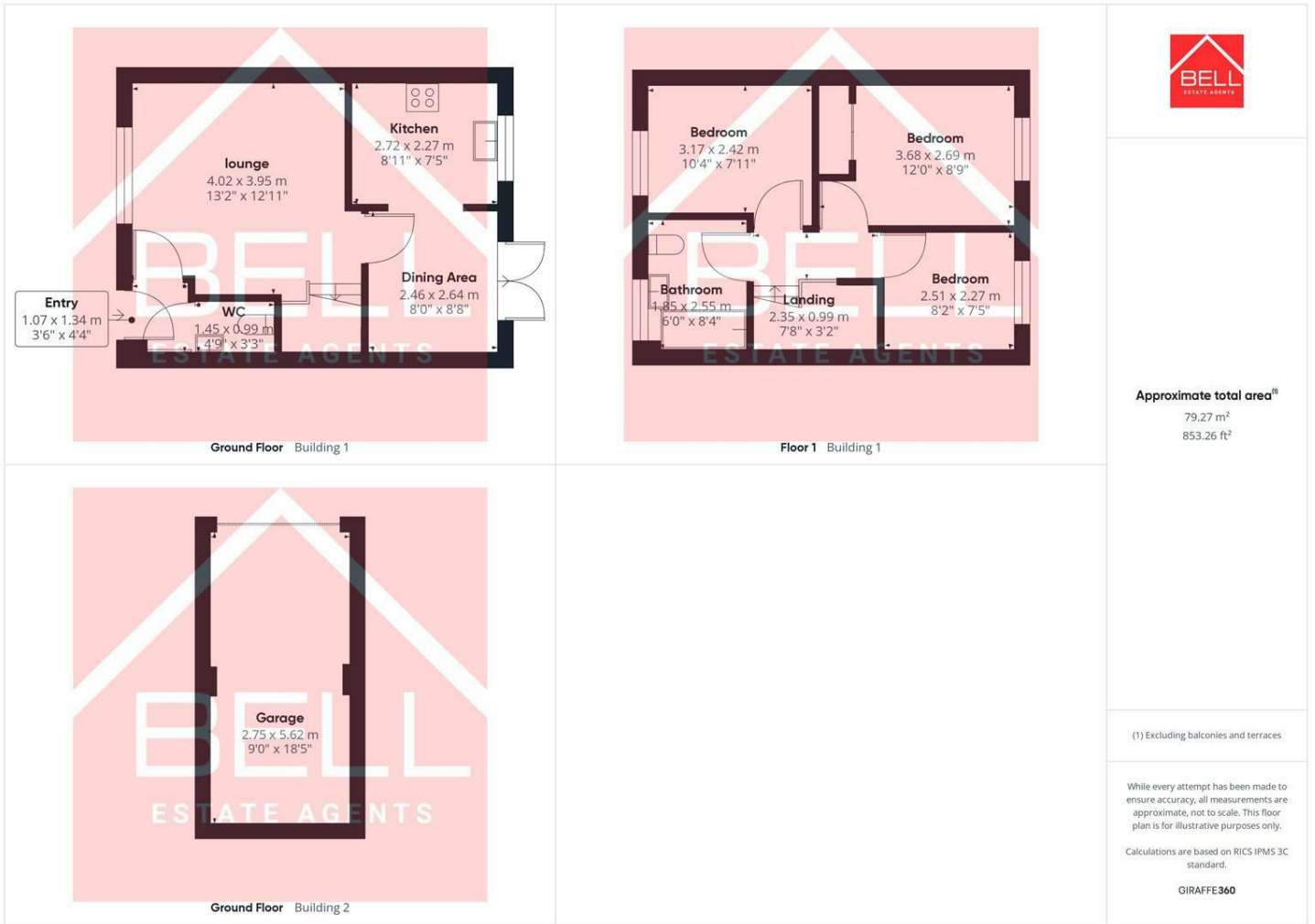
Bell Estate Agents are delighted to offer for sale this three bedroom mid link starter home on the ever popular development of East Shore Village. The property is nestled in this popular cul-de-sac and will appeal to families, couples and first time buyers alike. It briefly comprises of entrance porch, ground floor cloaks/WC, excellent size lounge with staircase to the first floor and a fitted kitchen/dining room. On the first floor you will find a landing leading to three good sized bedrooms and a three piece family bathroom.

Externally to the front lies a driveway and single garage. The rear benefits from an enclosed lawned garden with patio space all accessed via French doors from the kitchen.

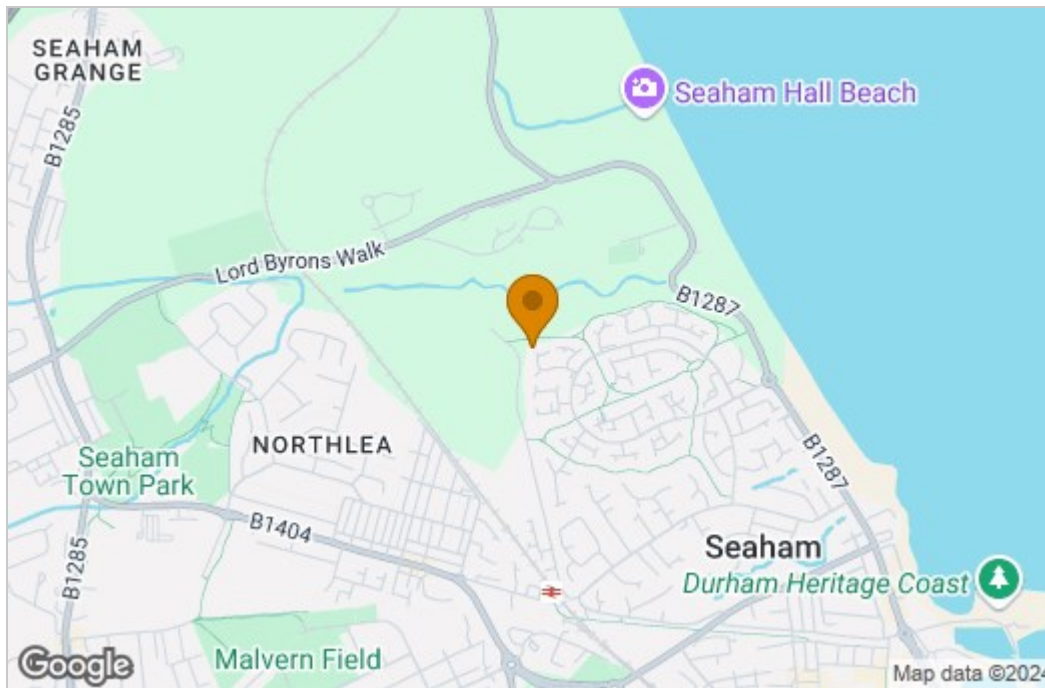
The property is close to local shops within East Shore Village and nearby Seaham Town Centre, a more comprehensive range of shopping and recreational facilities can be found in nearby Dalton Park Shopping Outlet or by heading North to Sunderland. Seaham is also well placed for commuting purposes, being close to the A19, which provides easy access to all regional centres.



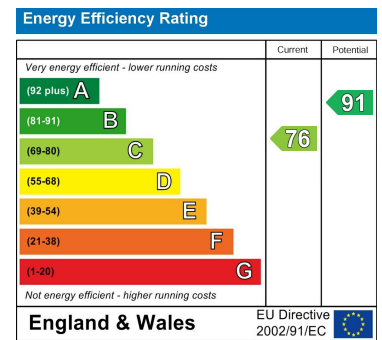
# Floor Plan



# Area Map



# Energy Efficiency Graph



These particulars, whilst believed to be accurate are set out as a general outline only for guidance and do not constitute any part of an offer or contract. Intending purchasers should not rely on them as statements of representation of fact, but must satisfy themselves by inspection or otherwise as to their accuracy. No person in this firm's employment has the authority to make or give any representation or warranty in respect of the property.