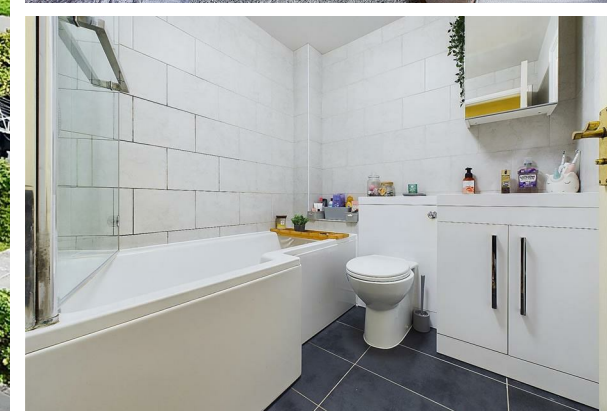




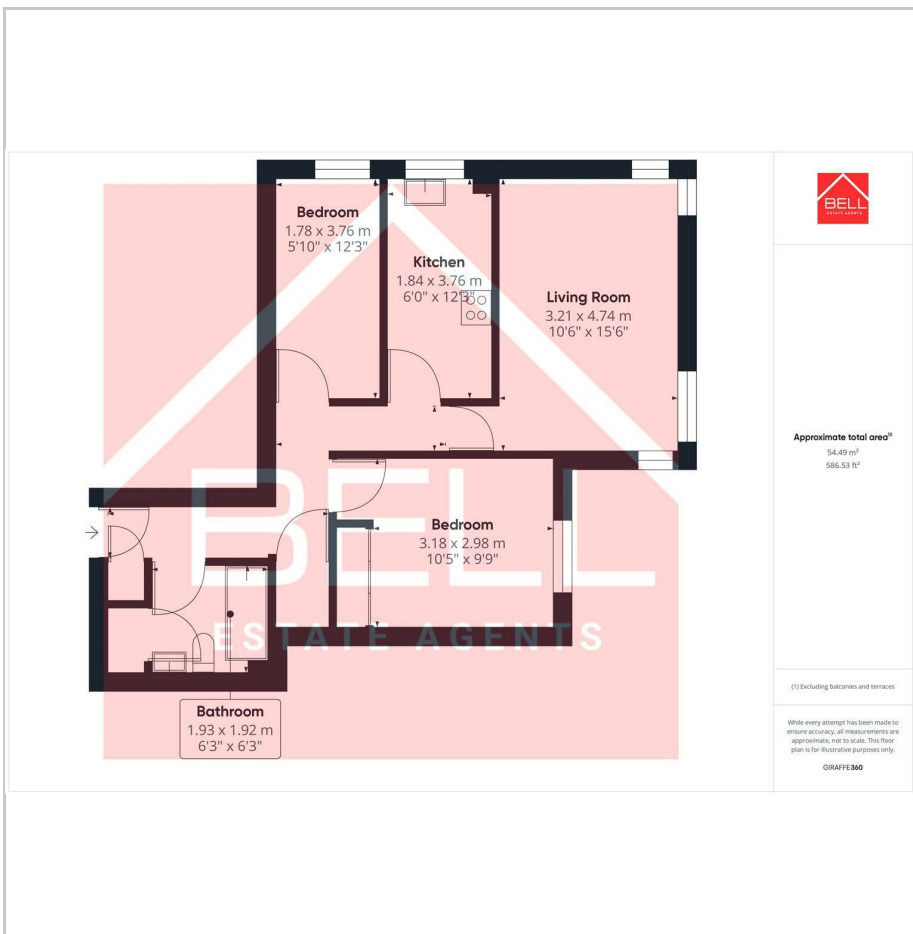
FOR SALE



14 Sandringham Court, Sheriffs Close, Felling, Gateshead, NE10 9UB

Offers Over £68,000

- First Floor Flat
- Modern Family Bathroom
- Off-Road Parking
- Fitted Kitchen
- EPC Rating - C
- Two Double Bedrooms
- Secure Communal Entrance
- Close To Local Amenities
- Electric Central Heating System
- Viewings Highly Recommended



THE PROPERTY

A well presented first floor modern apartment with views to the front aspect...

Bell Estate Agents are pleased to welcome to the market this two bedroom first floor apartment set within this desirable residential development. The accommodation comprises; residents secure communal entrance hallway and inner lobby to the apartment, apartment hallway, lounge & dining room, kitchen, master bedroom, second single bedroom and fully tiled family bathroom. Externally the apartment block rests within well tended gardens and views from the front over open greens, with the added benefit of an allocated parking bay.

Sandringham Court occupies a highly convenient location with easy access to Gateshead and Felling town centres where local amenities, supermarkets and professional services can be located. For the commuter, the A19, A1 and A184 provide links with the major commercial centres of the region. There are also two metro stations at Heworth & Felling which are within easy reach.

