



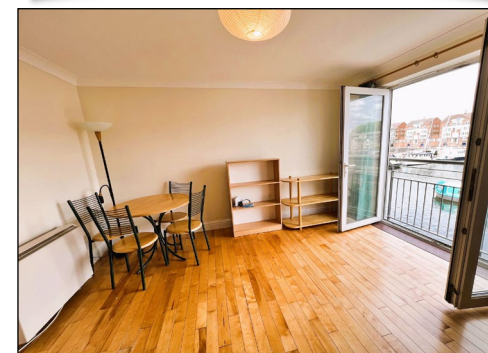
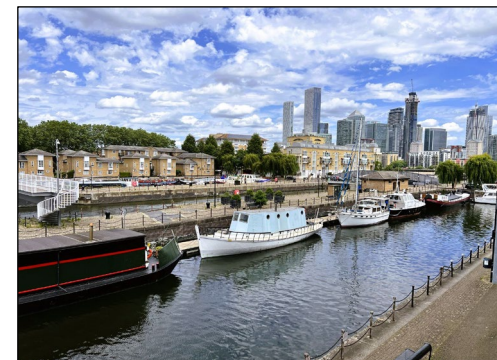
# PORTERS ESTATE AGENTS

RESIDENTIAL SALES, LETTINGS & MANAGEMENT

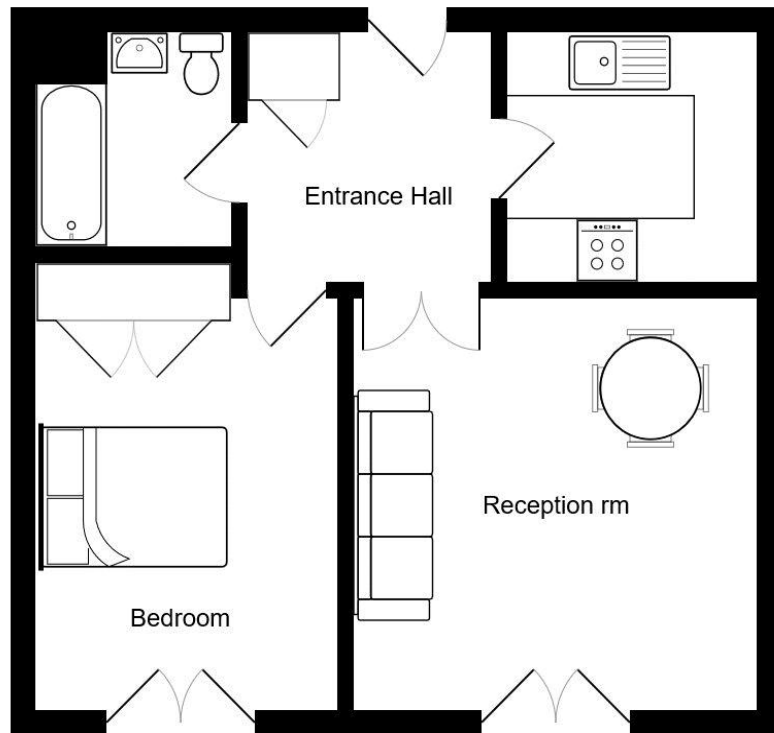
ANDREW CROFT & CO  
SOLICITORS & NOTARY PUBLIC



240 Balham High Road  
London SW17 7AW  
Tel: 020 8772 1004  
[www.portersbalham.com](http://www.portersbalham.com)  
[info@portersbalham.com](mailto:info@portersbalham.com)  
DX: 41604 Balham



# 4 Rainbow Quay Surrey Quays London SE16 7UF



Rainbow Quay London SE16

Total Area: 45.4 m<sup>2</sup> ... 489 ft<sup>2</sup>

All measurements are approximate and for display purposes only.

Council Tax: London Borough of Southwark Band  
D £1,387.52 for 2025/2026

A well decorated and bright one bedroom first floor flat offered to let with direct views over the dock and Canary Wharf with both bedroom and reception room having double opening doors with a Juliet balcony. The kitchen boasts built in appliances, there is a modern bathroom suite and a spacious entrance hall. Surrey Quays (0.6 mi) and Canada Water (0.7 mi) are within easy walking distance and local leisure facilities are close at hand. There is off street parking and underground parking. Early internal viewing is highly recommended via Porters Estate Agents.

- Direct views over the dock
- One double bedroom flat with wooden floors
- Newly decorated
- Modern kitchen with built in appliances
- Double glazed windows
- Built in wardrobes
- Modern bathroom suite
- Fantastic location
- Easy access to Surrey Quays station
- Available November