



PORTERS ESTATE AGENTS

RESIDENTIAL SALES, LETTINGS & MANAGEMENT

ANDREW CROFT & CO
SOLICITORS & NOTARY PUBLIC



240 Balham High Road
London SW17 7AW
Tel: 020 8772 1004
www.portersbalham.com
info@portersbalham.com
DX: 41604 Balham

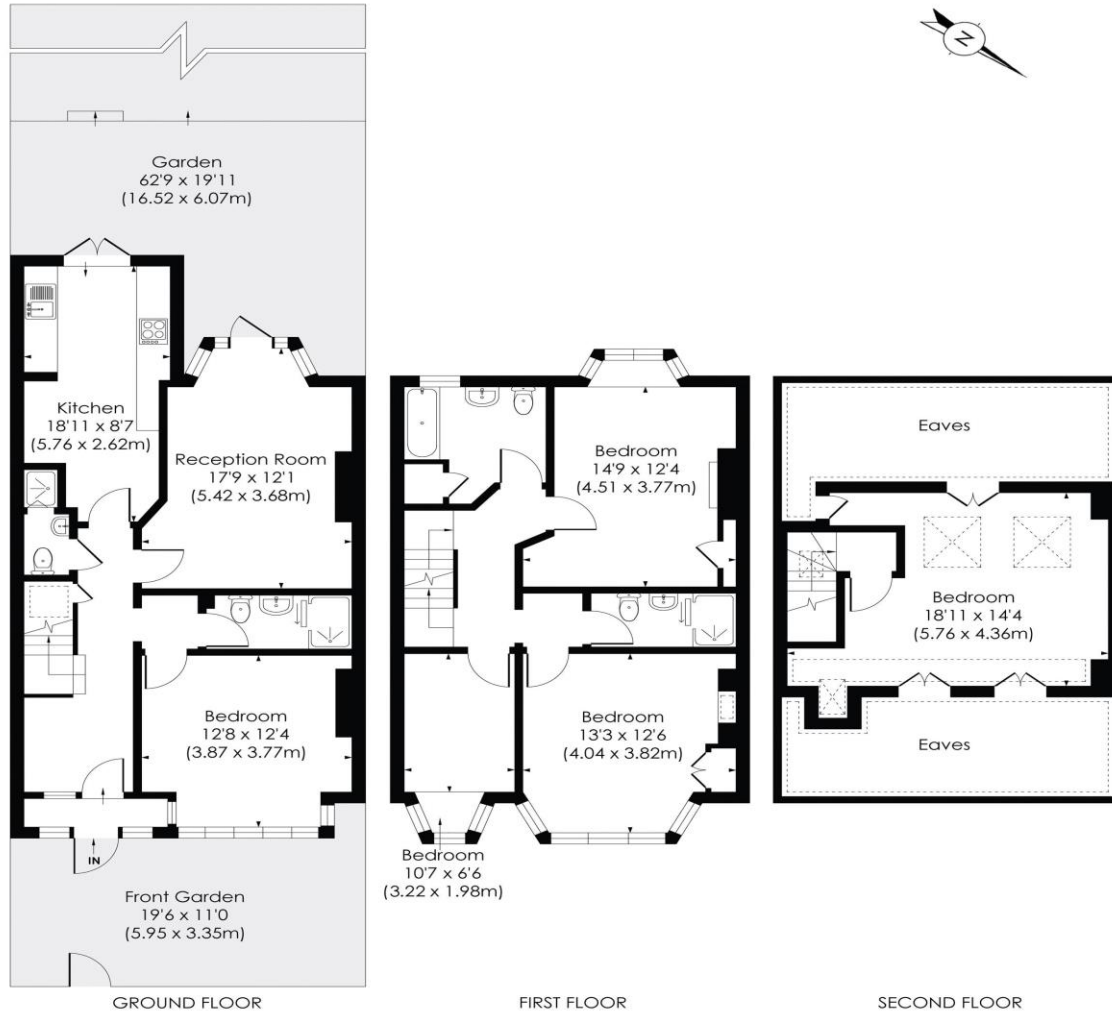


MOYSER ROAD, SW16

Approx. Gross Internal Floor Area

1890 Sq. ft/175.55 Sq. m (Including reduced height)

1541 Sq. ft/143.12 Sq. m (Excluding reduced height)



© Pixangle Property Marketing Ltd. info@pixangle.com Tel: 0208 870 2118

This floor plan has been prepared for the purpose of illustration only in accordance with the latest RICS code of measuring practice and is not to scale. All measurements and areas are approximate and whilst every effort has been made to ensure the accuracy of the plan contained here, no responsibility is taken for any error, omission or misstatement.

Moyser Road Furzedown SW16 6SH

A five bedroom house ideal for sharers or a large family located in Furzedown SW16 within walking distance to Tooting Bec lido and Tooting Bec tube. Newly decorated with a refurbished luxury kitchen, 4 bathrooms, reception room and a private rear garden this period property is ready to move into. Contact Porters Estate Agents to arrange your viewing.

Council Tax: London Borough of Wandsworth Band

E £1174.74 for 2024/2025

- FIVE BEDROOM HOUSE WITH PRIVATE GARDEN
- IDEAL FOR SHARERS OR LARGE FAMILY
- Four bathrooms
- Refurbished luxury kitchen
- Spacious reception room
- Five good sized bedrooms
- Laminate wooden floors
- A short cycle or 20 minute to Tooting Bec Tube
- Close to Tooting Bec Lido and Common