



## 6 Kimberley Street Kibworth, Leicester, LE8 0HT Asking Price £395,000

A beautifully improved and deceptively spacious Three Bedroom Cottage nestled in the heart of this highly sought-after village.

Full of charm and character, this stunning home has been thoughtfully extended and modernised throughout, perfectly blending traditional features with stylish contemporary living. The extended layout now boasts a bright and spacious kitchen/diner ideal for family life and entertaining, as well as a separate utility room and a convenient downstairs WC.

Inside, the accommodation comprises a cosy lounge, modern kitchen/diner, useful cellar, three well-proportioned bedrooms, a sleek family bathroom, and a generous loft room offering versatile extra space.

Outside, you'll find a charming patio area leading to a delightful cottage garden.

This is a truly unique opportunity to own a character home that's been brought up to modern standards, right in the centre of a picturesque village location.

### Viewing

Please contact our Berkley Leicester Office on 0116 2544755 if you wish to arrange a viewing appointment for this property or require further information.

- Beautifully presented three-bedroom cottage
- Spacious kitchen/diner
- Useful cellar offering additional storage
- Three well-proportioned bedrooms and a stylish family bathroom
- Situated in the centre of the village, close to local amenities
- A perfect blend of traditional charm and modern living
- Separate utility room and convenient downstairs WC



3



1

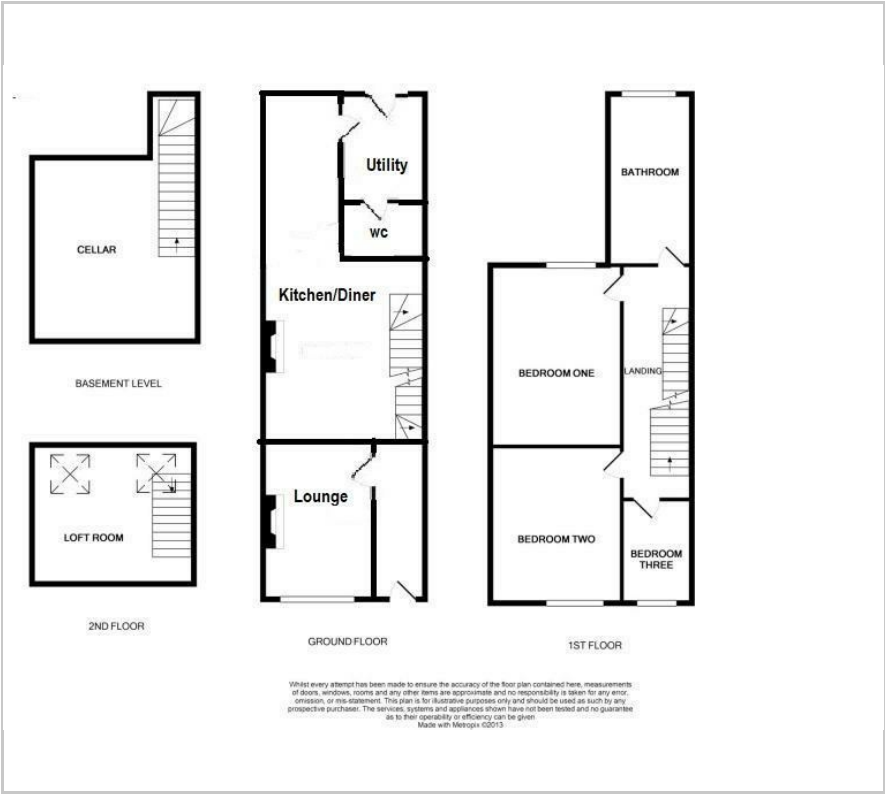


4



E

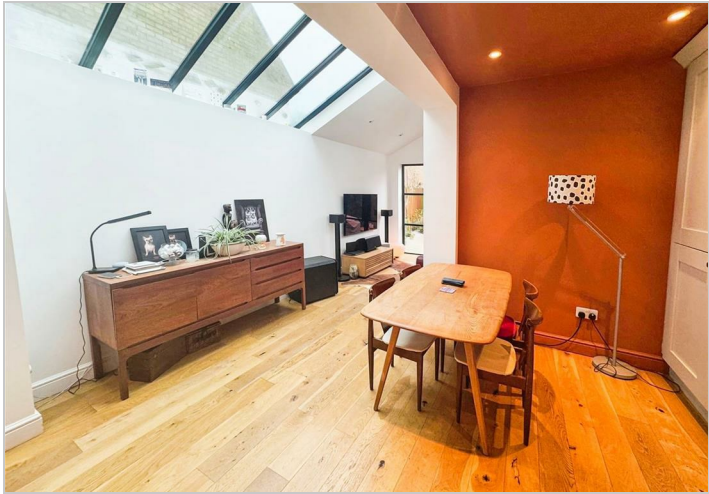
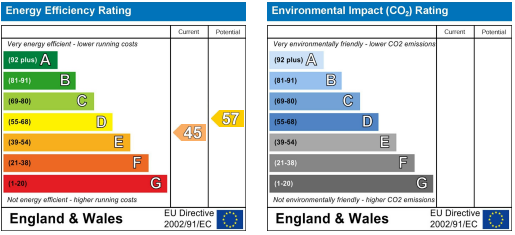
Floor Plan



Area Map



Energy Efficiency Graph



These particulars, whilst believed to be accurate are set out as a general outline only for guidance and do not constitute any part of an offer or contract. Intending purchasers should not rely on them as statements of representation of fact, but must satisfy themselves by inspection or otherwise as to their accuracy. No person in this firms employment has the authority to make or give any representation or warranty in respect of the property.