



## 347 Narborough Road , Leicester, LE3 2RD Offers In Excess Of £225,000

Berkley are delighted to offer to the market this mid terrace property having recently undergone some refurbishment with a new boiler and a new roof installed. With accommodation comprising two reception rooms, and the kitchen to the ground floor and three bedrooms and a bathroom on the first floor. To the rear there is a spacious garden with plenty of potential.

The property is being sold with no upward chain, viewing early to avoid disappointment is advised.

### Viewing

Please contact our Berkley Leicester Office on 0116 2544755 if you wish to arrange a viewing appointment for this property or require further information.



3



1



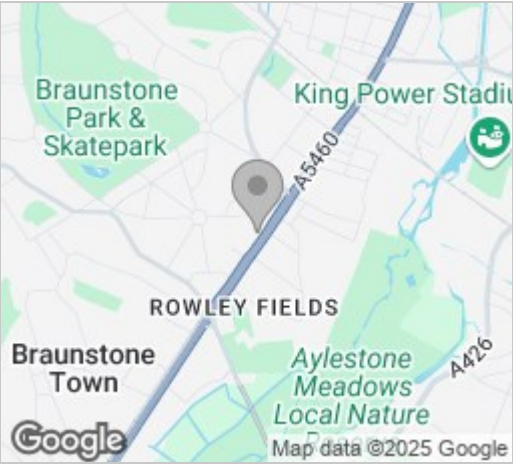
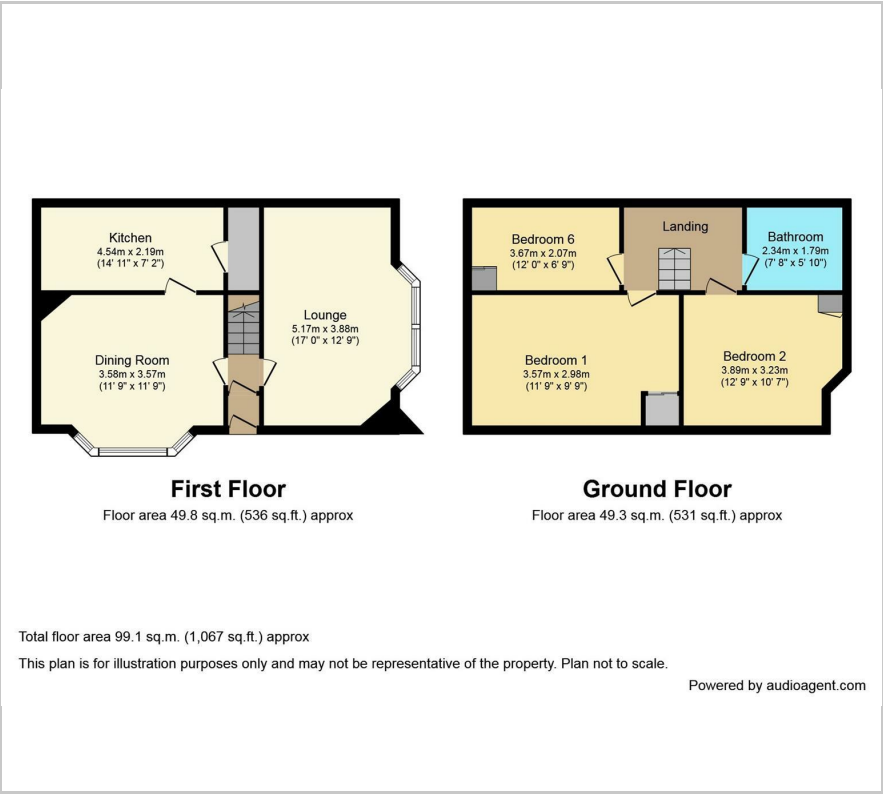
2



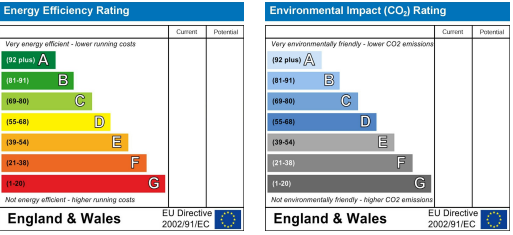


Floor Plan

Area Map



Energy Efficiency Graph



These particulars, whilst believed to be accurate are set out as a general outline only for guidance and do not constitute any part of an offer or contract. Intending purchasers should not rely on them as statements of representation of fact, but must satisfy themselves by inspection or otherwise as to their accuracy. No person in this firms employment has the authority to make or give any representation or warranty in respect of the property.