



48 Leicester Road

Thurcaston, Leicester, LE7 7JG

Offers Around £425,000

Individually designed detached family in this popular Charnwood village located near the borders of Cropston, Rothley and Swithland and close to Bradgate Park. The centrally heated and double glazed accommodation briefly comprises to the ground floor porch, entrance hall, lounge, open plan kitchen/ diner, snug/ breakfast room, utility and cloaks/ w.c on the ground floor. Four double bedrooms on the first floor (principle with en suite) and family bathroom. The property has a good sized South West facing garden with open views to the rear. To the front is off road parking for several cars and storage in the converted garage. There is no chain with this property

- No Chain
- Generous South West Facing Garden
- Four Double Bedrooms
- Principle Bedroom With En Suite
- Large Lounge
- Open Plan Dining Kitchen
- Snug
- Popular Village

Viewing

Please contact our Berkley Leicester Office on 0116 2544755 if you wish to arrange a viewing appointment for this property or require further information.



4



2



2



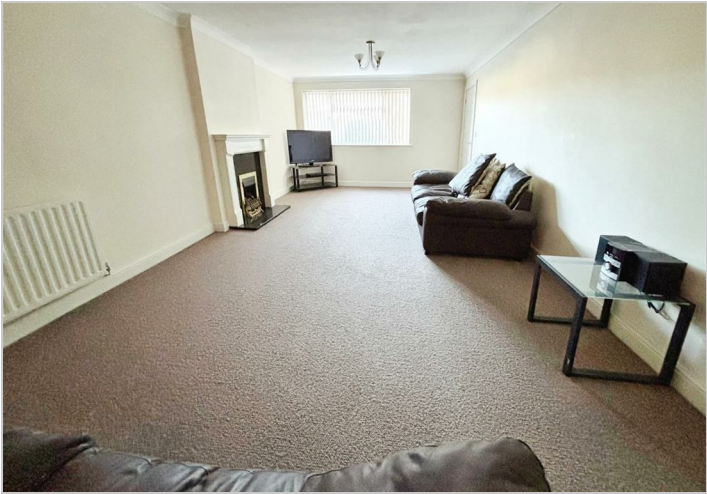
Floor Plan



Area Map



Energy Efficiency Graph



These particulars, whilst believed to be accurate are set out as a general outline only for guidance and do not constitute any part of an offer or contract. Intending purchasers should not rely on them as statements of representation of fact, but must satisfy themselves by inspection or otherwise as to their accuracy. No person in this firms employment has the authority to make or give any representation or warranty in respect of the property.