



# Flat 43, 26, The River Buildings Western Road , Leicester, LE3 0GR Asking Price £150,000

This well presented two-bedroom riverside apartment boasts generous, centrally heated living spaces. Upon entering, you'll find a communal lobby with both stairs and a lift leading to the first-floor landing, which grants access to the flat. Inside, there's a welcoming entrance hall, a large lounge/dining area featuring a balcony that overlooks the picturesque River Soar, and a well-equipped kitchen. The apartment includes two spacious double bedrooms, a sizable bath/shower room, and designated off-road parking. All of this is situated in the desirable West End area of Leicester City, known for its convenience and appeal.

### Viewing

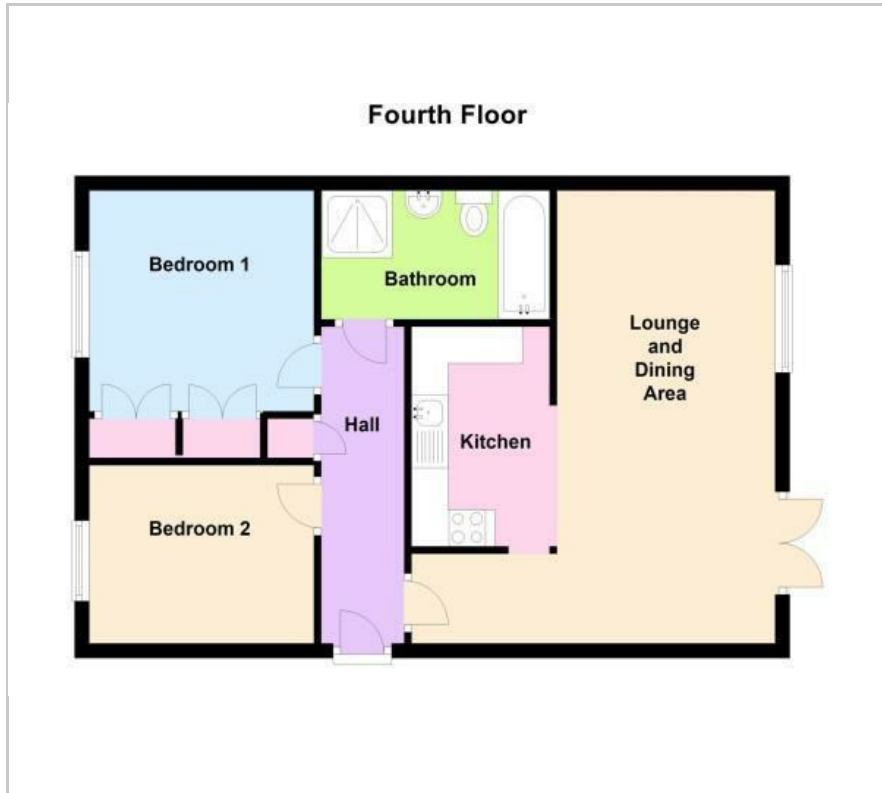
Please contact our Berkley Leicester Office on 0116 2544755 if you wish to arrange a viewing appointment for this property or require further information.

2   1   1  





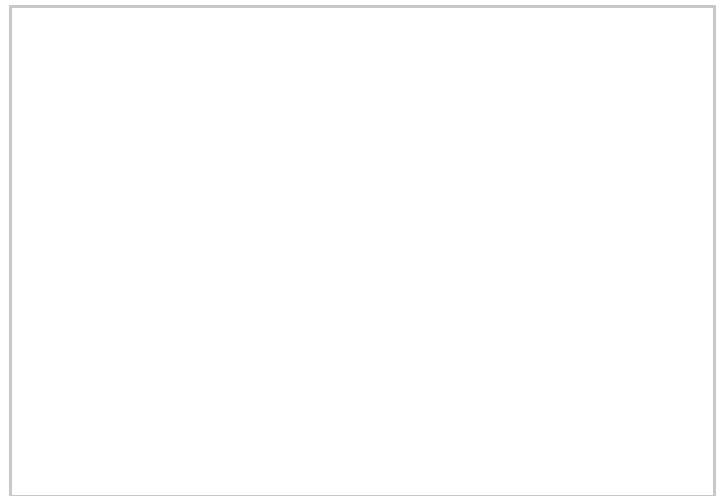
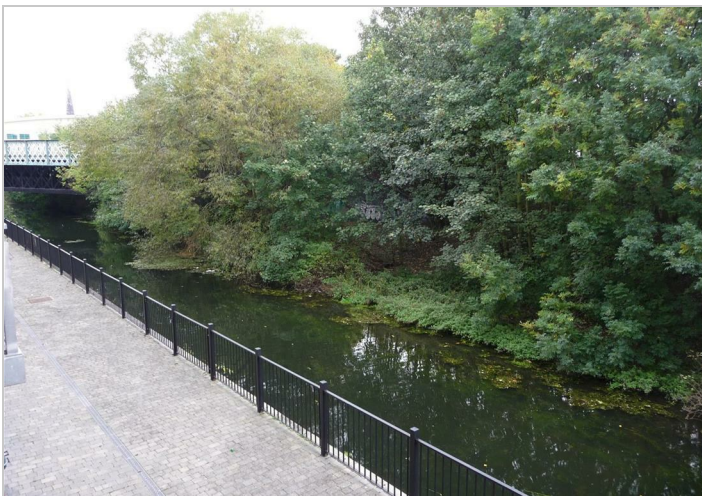
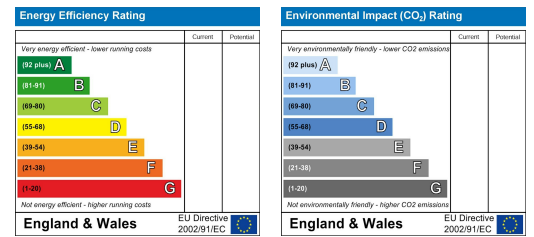
# Floor Plan



# Area Map



# Energy Efficiency Graph



These particulars, whilst believed to be accurate are set out as a general outline only for guidance and do not constitute any part of an offer or contract. Intending purchasers should not rely on them as statements of representation of fact, but must satisfy themselves by inspection or otherwise as to their accuracy. No person in this firm's employment has the authority to make or give any representation or warranty in respect of the property.