



16 Denis Close

, Leicester, LE3 6DQ

Offers In The Region Of £140,000

This delightful two-bedroom maisonette boasts a well cared for first-floor design. Upon entering, you'll be greeted by a welcoming entrance hall that leads to a roomy lounge opening up into the kitchen, two double bedrooms, and a family bathroom. The home is equipped with gas central heating powered by a combi boiler and benefits from Upvc double glazing throughout. Furthermore, it offers the convenience of an in-block garage, loft access and a low maintenance garden.

Viewing

Please contact our Berkley Leicester Office on 0116 2544755 if you wish to arrange a viewing appointment for this property or require further information.



2



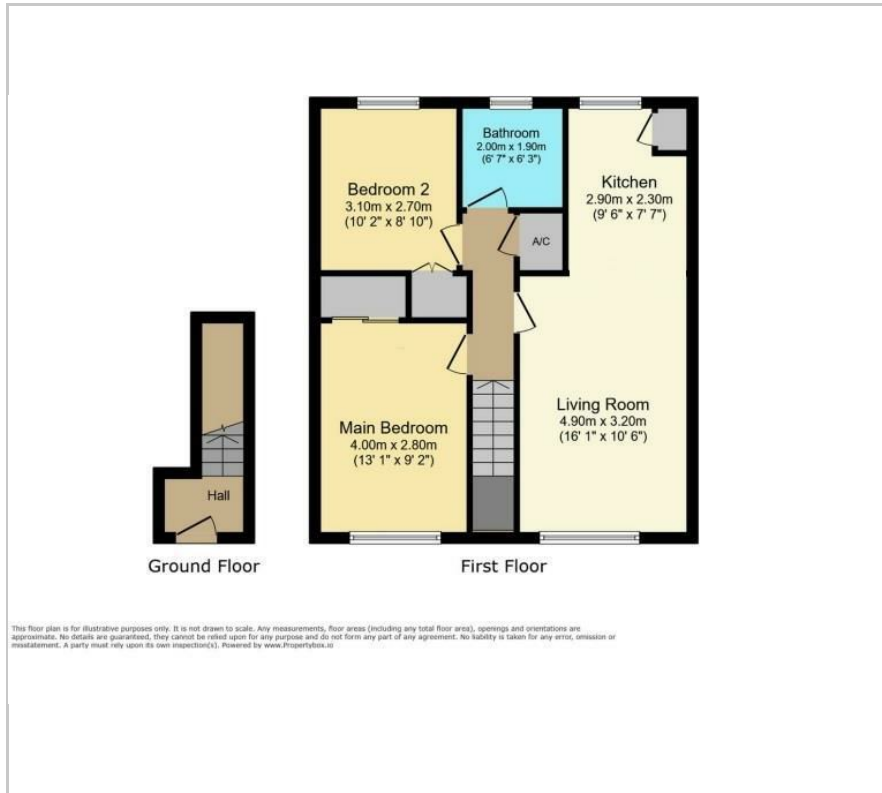
1



1



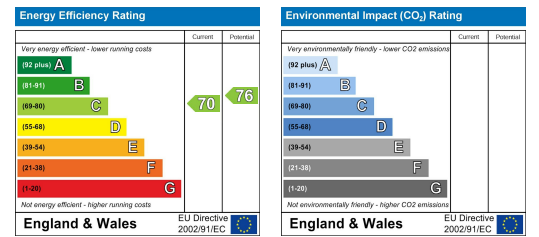
Floor Plan



Area Map



Energy Efficiency Graph



These particulars, whilst believed to be accurate are set out as a general outline only for guidance and do not constitute any part of an offer or contract. Intending purchasers should not rely on them as statements of representation of fact, but must satisfy themselves by inspection or otherwise as to their accuracy. No person in this firm's employment has the authority to make or give any representation or warranty in respect of the property.