



1 Alvaston Road

, Leicester, LE3 2EA

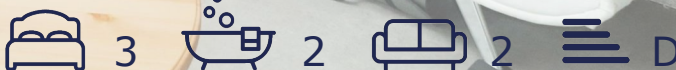
Asking Price £390,000

This stunning three/four bedroom semi detached home has been beautifully refurbished and extended, offering a perfect blend of modern living in a prime location. The property boasts an entrance hallway, separate lounge, office/snug, downstairs shower room, utility room, and a breathtaking living kitchen with bifold doors opening to a spacious garden. Upstairs, you'll find three bedrooms and a family bathroom. The property benefits from underfloor heating and is being sold with no upward chain, this property is a must-see! Schedule your internal viewing today.

- 3/4 Bedroom semi detached home
- Beautifully refurbished and extended
- Stunning Living Kitchen
- Separate lounge/Snug
- Downstairs office/bedroom with en-suite
- No chain

Viewing

Please contact our Berkley Leicester Office on 0116 2544755 if you wish to arrange a viewing appointment for this property or require further information.



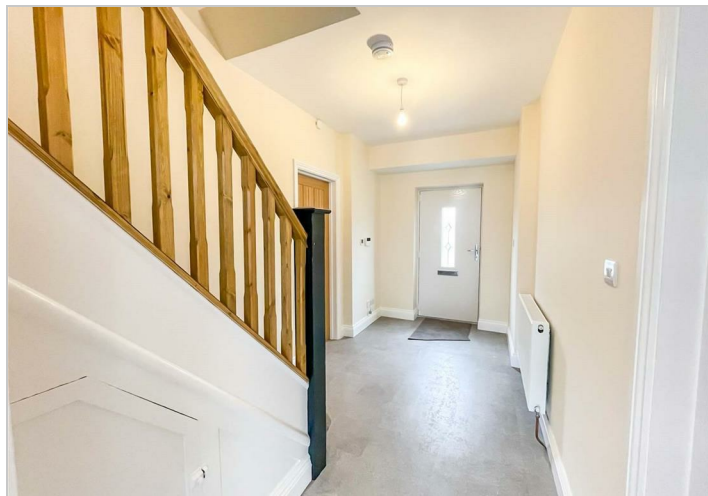
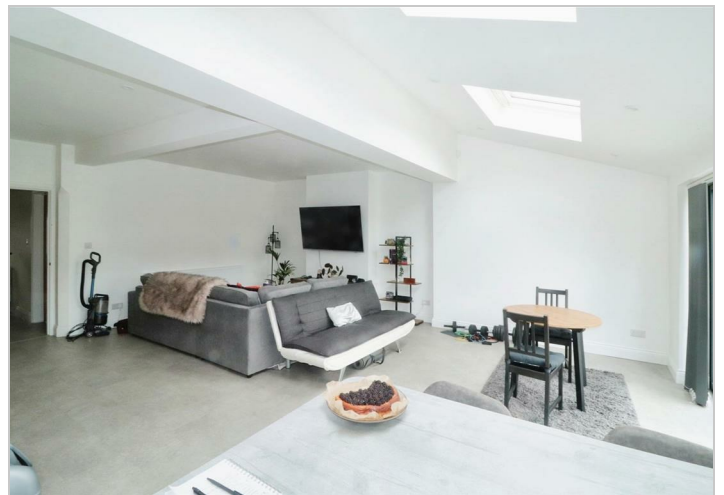
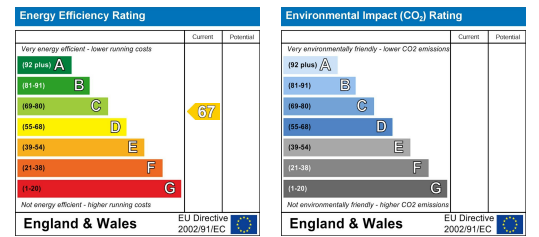
Floor Plan



Area Map



Energy Efficiency Graph



These particulars, whilst believed to be accurate are set out as a general outline only for guidance and do not constitute any part of an offer or contract. Intending purchasers should not rely on them as statements of representation of fact, but must satisfy themselves by inspection or otherwise as to their accuracy. No person in this firms employment has the authority to make or give any representation or warranty in respect of the property.