



# 18 Kingswood Avenue

, Leicester, LE3 0UN

Asking Price £300,000

Discover the charm of this classic semi-detached family home, complete with a beautiful bay window. Nestled in a sought-after area, this property boasts convenient access to both the City Centre and major road connections. Step inside to find an inviting entrance hallway, a cozy lounge with a bay window, a secondary reception room at the rear, and a separate kitchen. Upstairs, you'll find three bedrooms, a family bathroom, and a separate wc. Outside, the front of the property offers parking space for two cars, while the rear showcases a meticulously landscaped garden. Don't miss out on the opportunity to make this your perfect family home - book an early viewing today to avoid any regrets.

## Viewing

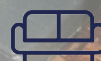
Please contact our Berkley Leicester Office on 0116 2544755 if you wish to arrange a viewing appointment for this property or require further information.



3



1

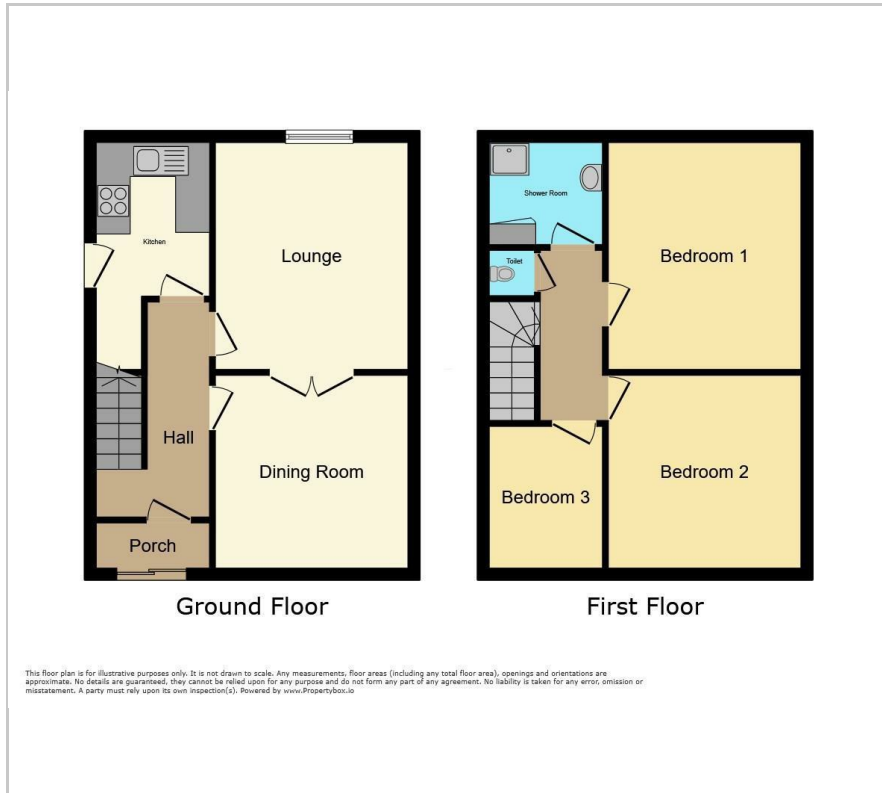


2





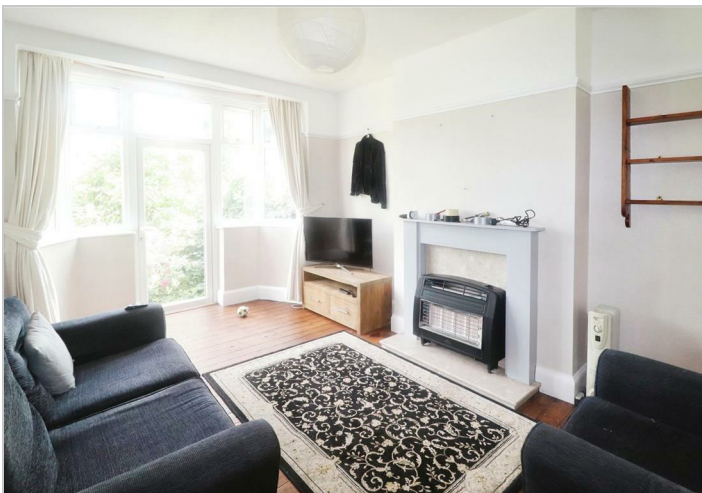
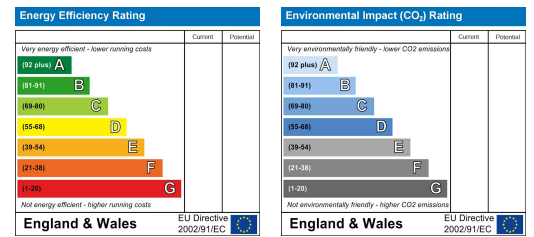
# Floor Plan



# Area Map



# Energy Efficiency Graph



These particulars, whilst believed to be accurate are set out as a general outline only for guidance and do not constitute any part of an offer or contract. Intending purchasers should not rely on them as statements of representation of fact, but must satisfy themselves by inspection or otherwise as to their accuracy. No person in this firms employment has the authority to make or give any representation or warranty in respect of the property.