



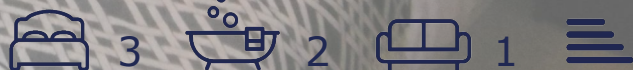
24 Wheatsheaf Way , Leicester, LE2 6EQ Offers Over £250,000

Situated in the highly desirable Wheatsheaf Works development in Knighton Fields, this delightful mid-townhouse provides generous living space spread over three levels. Featuring a delightful blend of modern flair and traditional elements like exposed brickwork and two impressive picture windows, this residence is bound to leave a lasting impression. Offering an open plan L-shaped living kitchen dining area, three bedrooms (including one with an en-suite), and a family bathroom, this property seamlessly combines functionality with elegance. Outside, you'll find a low-maintenance front garden, and a designated parking spot at the back. Whether you're in search of a family residence or an investment opportunity, this home has it all. Don't let the chance to view this exceptional property slip away - schedule a viewing today!

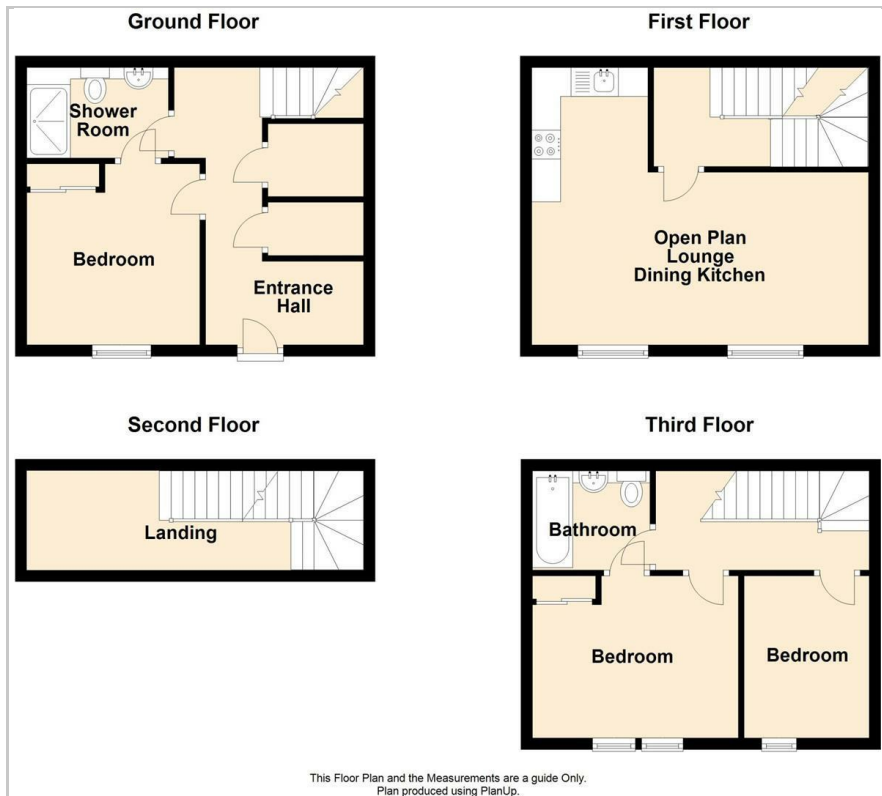
- No Chain
- Three Storey accommodation
- Entrance Hall, Bedroom Three With En-suite Shower Room
- Ideal Investment
- Great Location
- Must be viewed

Viewing

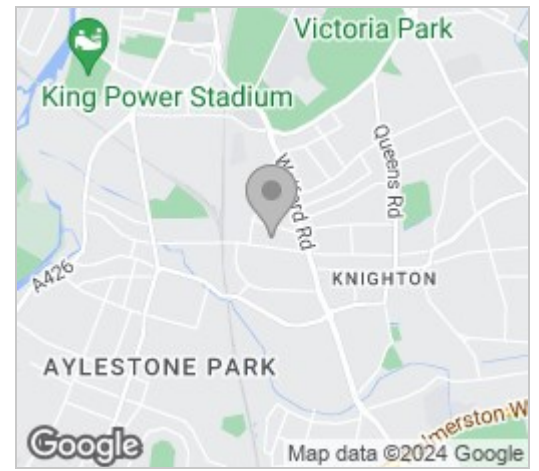
Please contact our Berkley Leicester Office on 0116 2544755 if you wish to arrange a viewing appointment for this property or require further information.



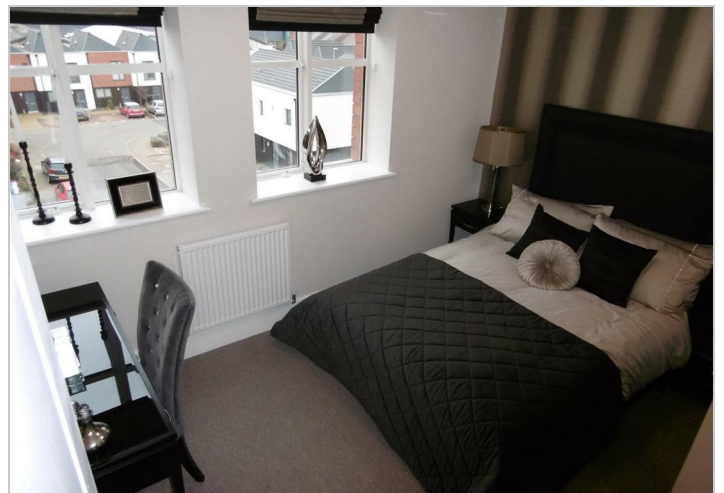
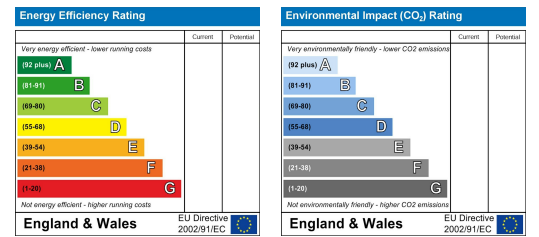
Floor Plan



Area Map



Energy Efficiency Graph



These particulars, whilst believed to be accurate are set out as a general outline only for guidance and do not constitute any part of an offer or contract. Intending purchasers should not rely on them as statements of representation of fact, but must satisfy themselves by inspection or otherwise as to their accuracy. No person in this firm's employment has the authority to make or give any representation or warranty in respect of the property.