



22 Wheatsheaf Way

, Leicester, LE2 6EQ

Offers Over £250,000

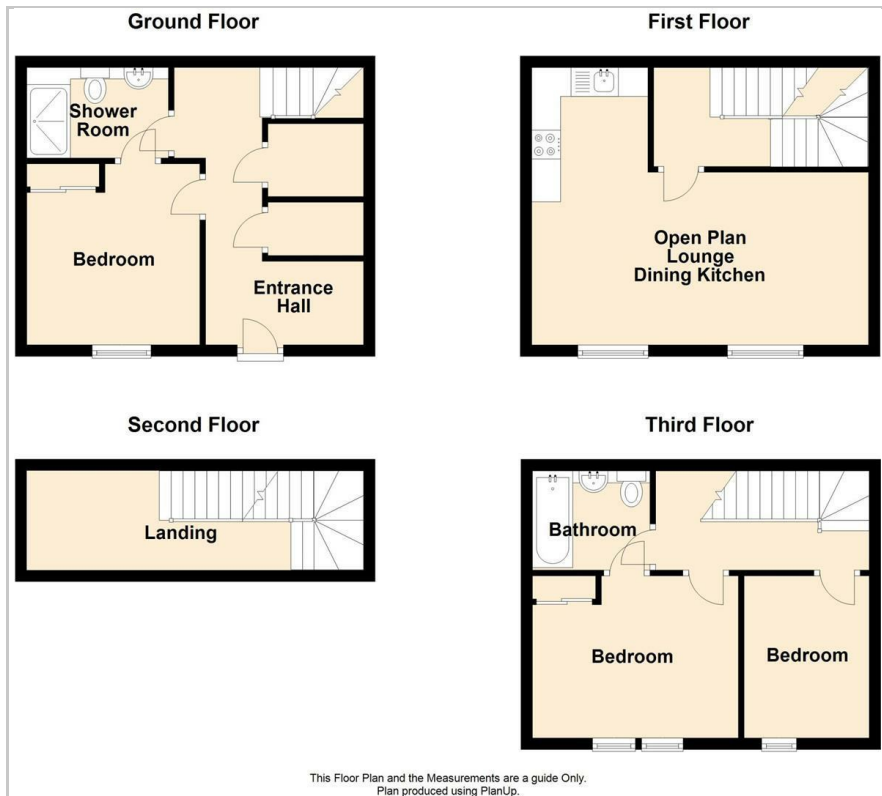
Located in the sought-after Wheatsheaf Works development in Knighton Fields, this charming mid-townhouse offers spacious living spread across three floors. With a perfect mix of contemporary style and classic features such as exposed brickwork and two stunning picture windows, this property is sure to impress. Boasting an open plan L-shaped living kitchen dining room, three bedrooms (one with en-suite), and a family bathroom, this home is both practical and stylish. Outside, there is a low-maintenance courtyard front garden, access to communal gardens, and an allocated parking space at the rear. Whether you're looking for a family home or a buy-to-let opportunity, this property ticks all the boxes. Don't miss out on the chance to see this fantastic home in person - book a viewing today!

- No Chain
- Three storey accommodation
- Entrance Hall, Bedroom Three With En-suite Shower Room
- First Floor With Open Plan Lounge Fitted Dining Kitchen
- Ideal Investment
- Great location

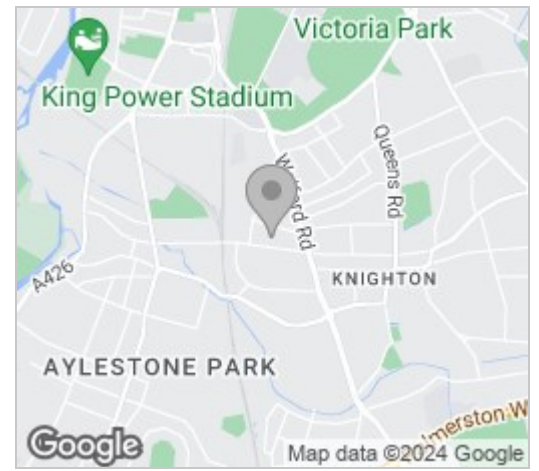
Viewing

Please contact our Berkley Leicester Office on 0116 2544755 if you wish to arrange a viewing appointment for this property or require further information.

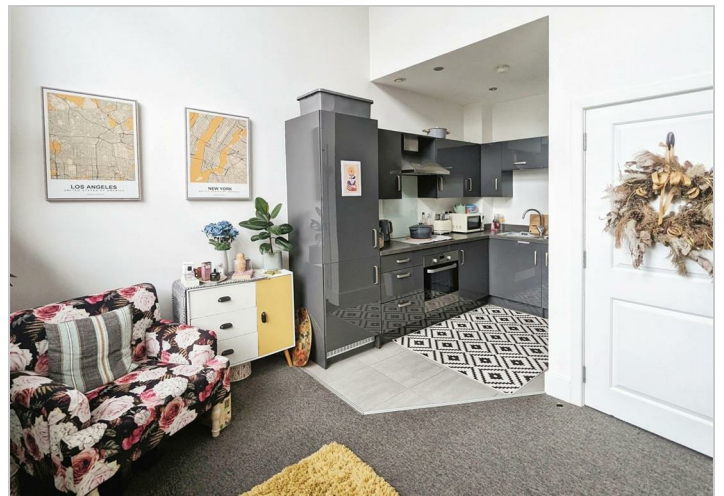
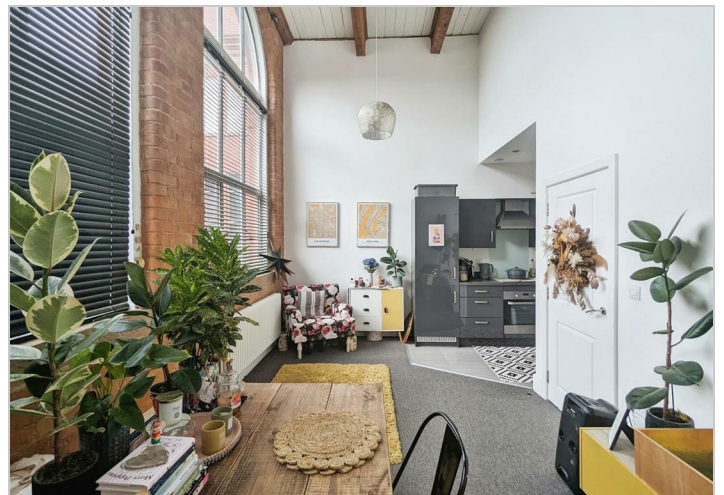
Floor Plan



Area Map



Energy Efficiency Graph



These particulars, whilst believed to be accurate are set out as a general outline only for guidance and do not constitute any part of an offer or contract. Intending purchasers should not rely on them as statements of representation of fact, but must satisfy themselves by inspection or otherwise as to their accuracy. No person in this firm's employment has the authority to make or give any representation or warranty in respect of the property.