



# 6 Ainsdale Road

, Leicester, LE3 0UA

## Asking Price £300,000

This three bedroom semi-detached home is now available for sale, and the best part is, there's no upward chain! Situated in a fantastic location with easy access to the city center, this property has been beautifully refurbished. Step inside and you'll find an inviting entrance hall, a spacious lounge diner, a charming garden room, and a modern kitchen. Upstairs, there are three good sized bedrooms and a well-appointed bathroom. Outside, the plot boasts a driveway leading to an attached garage, as well as a lovely lawned garden at the rear. Additionally, there are outbuildings connected to the house via a lobby area. Don't miss out on this wonderful opportunity - call us today to arrange your viewing!

- No Chain
- Three bedrooms
- Spacious Lounge
- Kitchen/Diner
- Large rear garden
- Parking to front
- Ideal location
- Must be seen

### Viewing

Please contact our Berkley Leicester Office on 0116 2544755 if you wish to arrange a viewing appointment for this property or require further information.



3 1 2 E

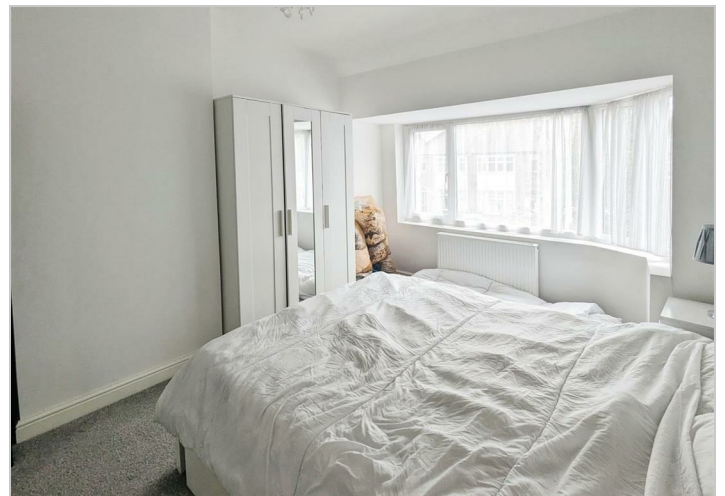
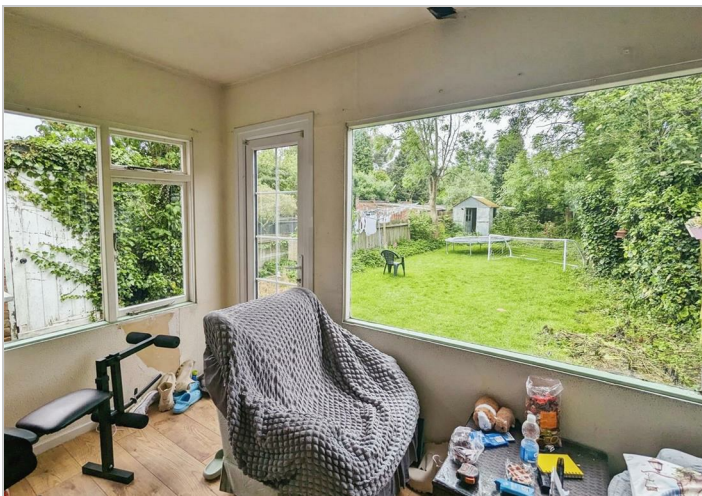
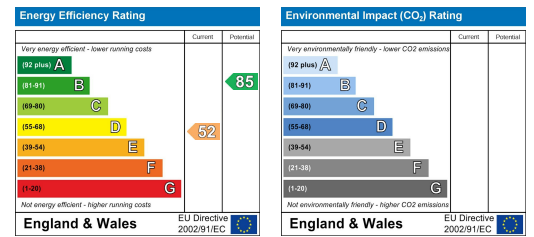
# Floor Plan



# Area Map



# Energy Efficiency Graph



These particulars, whilst believed to be accurate are set out as a general outline only for guidance and do not constitute any part of an offer or contract. Intending purchasers should not rely on them as statements of representation of fact, but must satisfy themselves by inspection or otherwise as to their accuracy. No person in this firm's employment has the authority to make or give any representation or warranty in respect of the property.