



44 Ritchie Park

, Market Harborough, LE16 9LP

Offers Over £235,000

Perfect for those looking to buy their first home or make a smart investment, this charming townhouse is conveniently located for quick access to the town center and schools. Step inside to find a welcoming entrance hall, a delightful breakfast kitchen, a cozy lounge, a lovely conservatory, three comfortable bedrooms, and a well-appointed bathroom. Outside, you'll find off-road parking at the front, well maintained gardens at the front and rear, and a convenient garage. This property ticks all the boxes for both first-time buyers and investors.

- Garden with Field View
- Conservatory
- Popular residential location
- Off road parking & Garage
- Well Presented Town House
- Lounge & Breakfast Kitchen

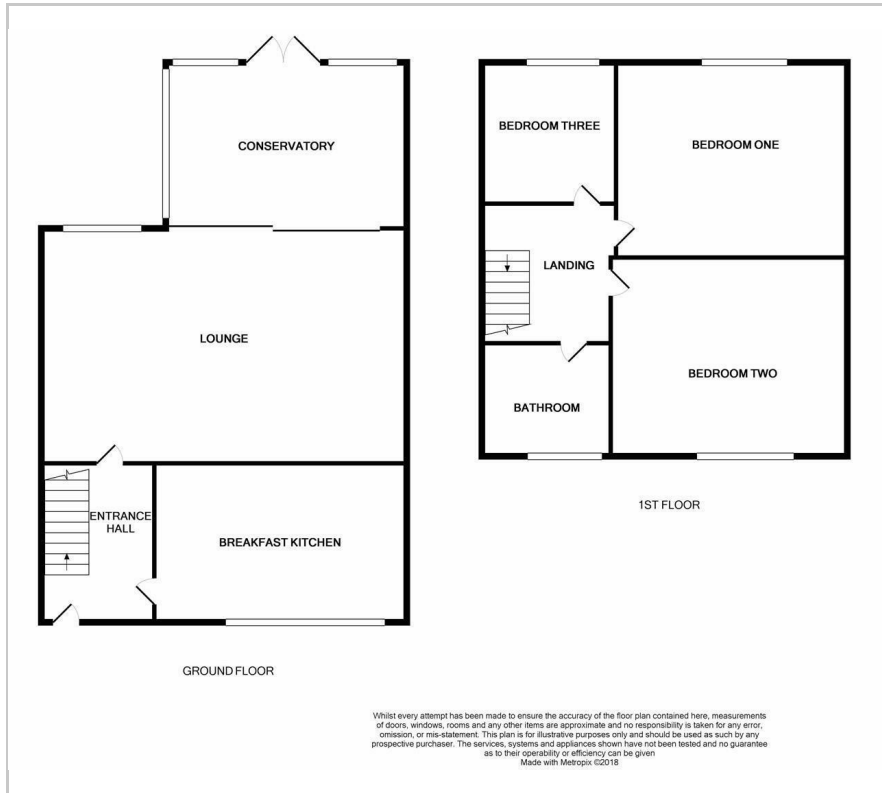
Viewing

Please contact our Berkley Leicester Office on 0116 2544755 if you wish to arrange a viewing appointment for this property or require further information.



3
 1
 1
 D

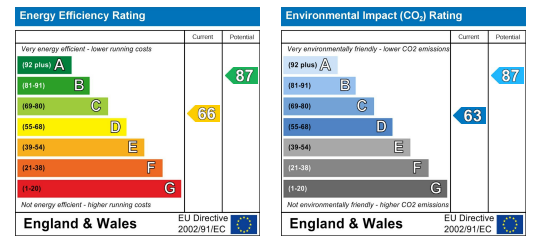
Floor Plan



Area Map



Energy Efficiency Graph



These particulars, whilst believed to be accurate are set out as a general outline only for guidance and do not constitute any part of an offer or contract. Intending purchasers should not rely on them as statements of representation of fact, but must satisfy themselves by inspection or otherwise as to their accuracy. No person in this firm's employment has the authority to make or give any representation or warranty in respect of the property.