



17 Ivy Road

, Leicester, LE3 0DF

Asking Price £190,000

Berkley is thrilled to introduce this charming two-bedroom mid-terrace property to the market, perfect for first-time buyers and buy-to-let investors. Its traditional design adds to its appeal. Situated conveniently for easy access to the City Centre and surrounded by a variety of local amenities on Narborough Road, this home offers a spacious front lounge that seamlessly flows into the dining room. The layout also includes a well-equipped kitchen, a first-floor landing, two cozy bedrooms, and a bathroom. Outside, you'll find a low maintenance courtyard that provides privacy. With no upward chain, we highly recommend an early viewing to avoid missing out on this fantastic opportunity.

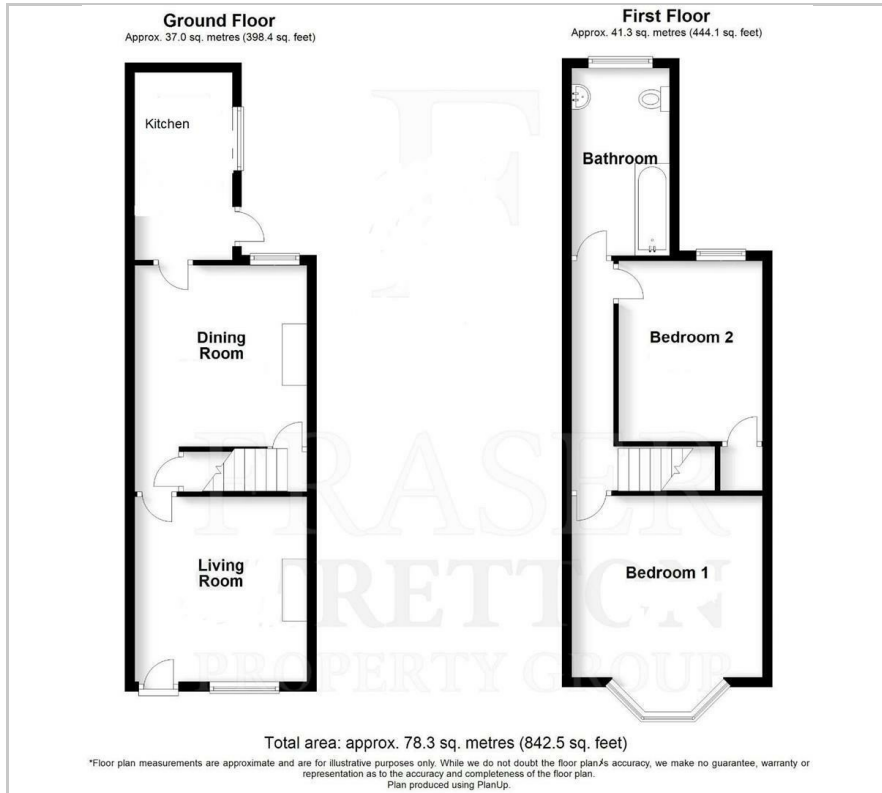
- Two bedrooms
- No chain
- ideal first time purchase
- Good buy to let investment
- Modern bathroom
- Two large reception rooms
- Close to local amenities

Viewing

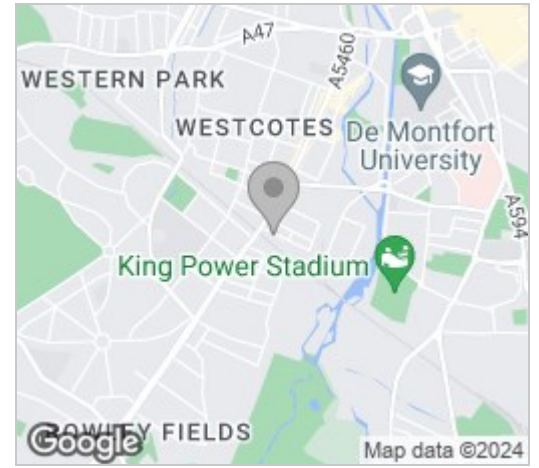
Please contact our Berkley Leicester Office on 0116 2544755 if you wish to arrange a viewing appointment for this property or require further information.



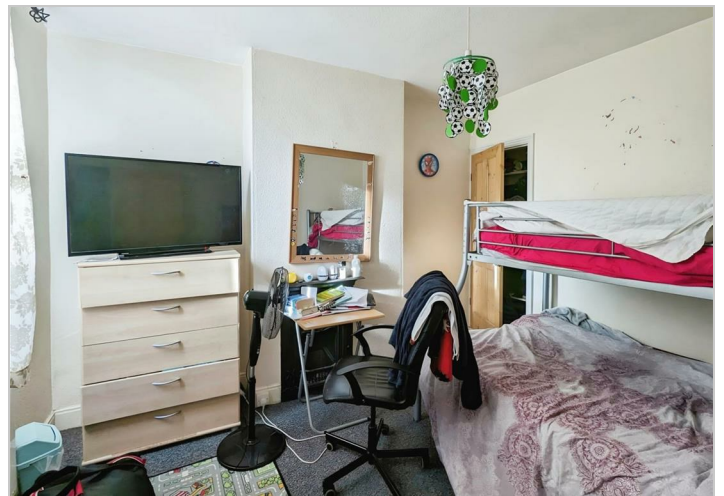
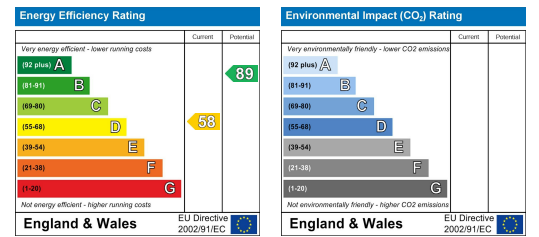
Floor Plan



Area Map



Energy Efficiency Graph



These particulars, whilst believed to be accurate are set out as a general outline only for guidance and do not constitute any part of an offer or contract. Intending purchasers should not rely on them as statements of representation of fact, but must satisfy themselves by inspection or otherwise as to their accuracy. No person in this firm's employment has the authority to make or give any representation or warranty in respect of the property.