



HOME FARM

Fernhurst, West Sussex



AN ATTRACTIVE GRADE II LISTED FAMILY HOUSE

On the edge of this highly sought-after village.

Summary of accommodation

Main House: Entrance hallway | Drawing room | Dining room | Sitting room | Kitchen/breakfast room | Utility/boot room | Cloakroom

Principal bedroom with bath | Four further bedrooms (one en suite) | Family bathroom

Home Farm Annexe: Sitting room/kitchen | Bedroom | Bathroom

Barn: Garage | Workshop | Machinery store

Agricultural barn | Field shelter (with two stables and tack room)

Sun terraces | Formal lawns | Kitchen garden | Paddocks

Gardens and grounds

In all about 12.02 acres

Distances: Fernhurst village green 0.7 miles, Haslemere 4 miles (London Waterloo from 52 minutes), Midhurst 6 miles
Petworth 8.5 miles, Guildford 18 miles (London Waterloo from 35 minutes), Chichester 19 miles, London 48 miles
(All distances and times are approximate)

FERNHURST

Home Farm occupies a private and secluded setting on the edge of the village of Fernhurst within the South Downs National park. The village provides a number of local shops, a post office, church, primary school, doctors’ surgery, village hall, and a highly regarded public house, The Red Lion. The picturesque village green creates the quintessential English setting. More comprehensive shopping facilities are available in the nearby towns of Haslemere, Midhurst, Petworth and Petersfield.

Communications in the area are excellent, with London being approximately 48 miles away and with the A3 giving access to the south coast, the M25 and Gatwick, Heathrow and Southampton airports. Sporting facilities are superb, with racing at Goodwood and Fontwell, polo at Cowdray Park and sailing off the south coast at Chichester. For the arts, the Festival Theatre in Chichester together with the concert hall in Guildford are also within easy reach.



Within the area there is an excellent range of preparatory and senior schools including Ditcham Park, Churcher's and Bedales at Petersfield, Westbourne House at Chichester, Seaford College near Petworth, Highfield and Brookham at Liphook and Amesbury and St Edmund's at Hindhead. Other schools include Charterhouse at Godalming, King Edward's in Witley and Cranleigh School.

HOME FARM

An attractive Grade II listed family house, we understand Home Farm dates back to about 1450 at its oldest part, with further significant additions, including the kitchen, added in the mid-18th Century. Much modernised and updated during our clients' ownership, the property benefits from many period features that one would expect of a property of this era, including exposed beams, some beautiful old brickwork and with much of the old house being built in local stone and brick under a clay-tile roof.



To the ground floor is a wonderful through-flow of reception spaces, incorporating two principal reception rooms. Both reception rooms offer good ceiling heights and period fireplaces, with an open fire to the drawing room, while the sitting room in turn features a log burning stove in a stunning old hearth.

The kitchen breakfast room is also a real highlight of the property, with the windows here looking out over the surrounding formal gardens to the paddocks beyond. Home Farm benefits from excellent flexibility of accommodation, with three bedrooms on the first floor, while to the ground floor is a self-contained bedroom suite, perfect for an au pair or older visiting relatives.





THE BARN

Located off the courtyard to the front of the property, the barn at Home Farm benefits from garaging and two secure stores to the ground floor, while to the first floor is the self-contained annexe/guest flat which is currently let out on an assured shorthold tenancy. This annexe is perfect to provide either an income for the property, or indeed for additional spillover accommodation. Please note the annexe currently pays council tax and is metered separately for electricity.

GARDENS AND GROUNDS

Home Farm is accessed via an old farm gate into a gravelled courtyard providing parking for numerous cars. To the rear of the property, the main house is bounded by sun terraces and formal lawns, with established shrub borders and a kitchen garden. Beyond this and separated from the main gardens via a post-and-rail fence, is the paddock, currently used for grazing, with the whole property being bounded by mature trees allowing for great privacy.

Across the farm lane from the main house is a secondary area of land which is currently used for the grazing of horses and has historically been used to graze sheep. Here lies the agricultural barn, currently used for storage, as well as a field shelter with two stables and a tack room. This parcel of land benefits from two separate entrances onto the public highway, one off the farm track opposite the main house, while the secondary access leads directly onto Miggs Lane.



PROPERTY INFORMATION

Services: We are advised by our clients that the property has mains water and electricity, private drainage and oil-fired central heating.

Tenure: Freehold

Local Authority: Chichester District Council and South Downs National Park Authority

Council Tax: Home Farm: Band G, Annexe: Band A

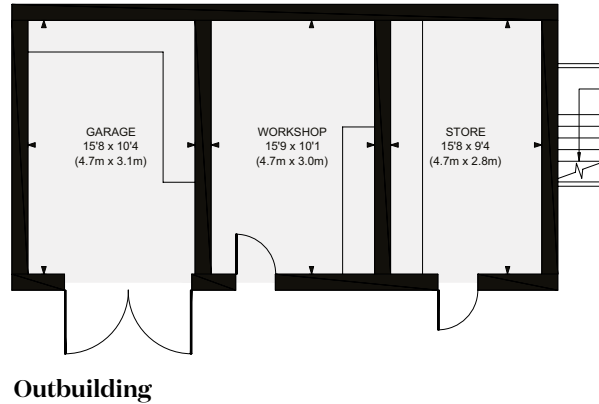
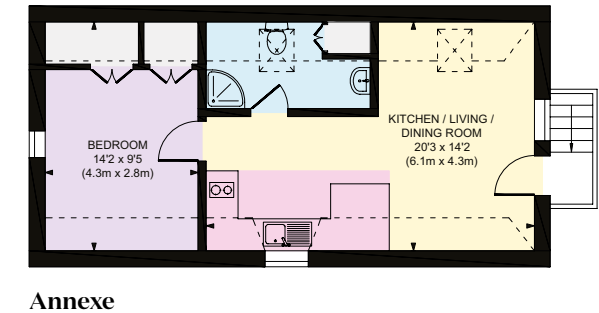
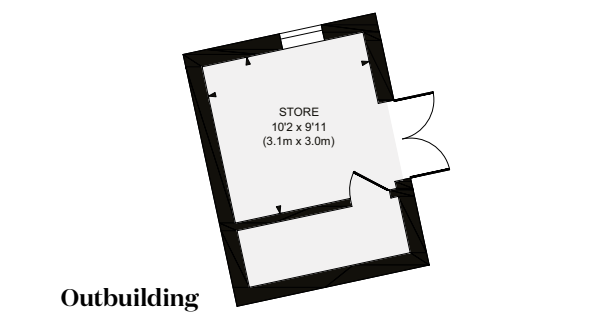
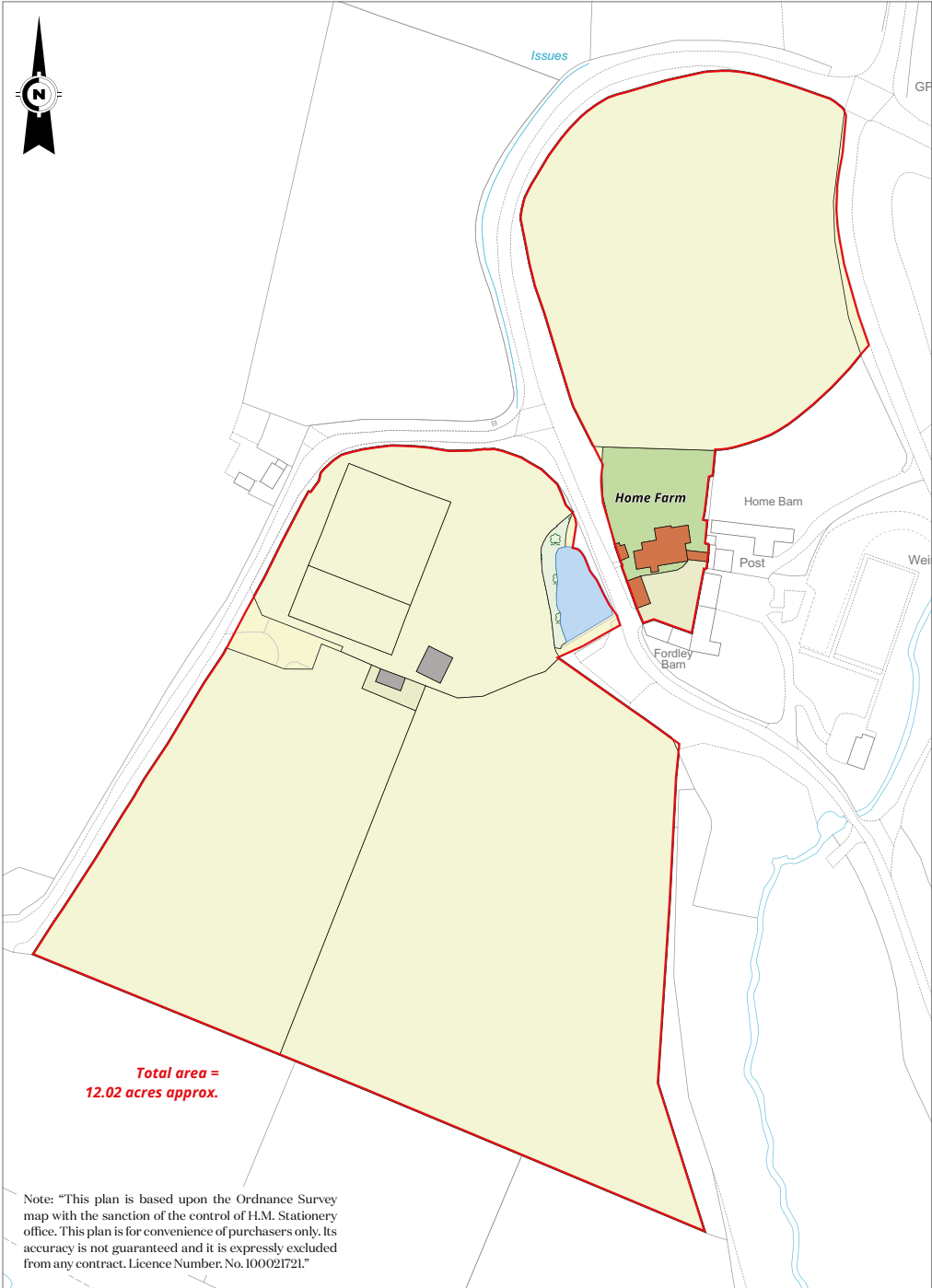
EPC Ratings: Home Farm: E, Annexe: D

Tenure: Freehold

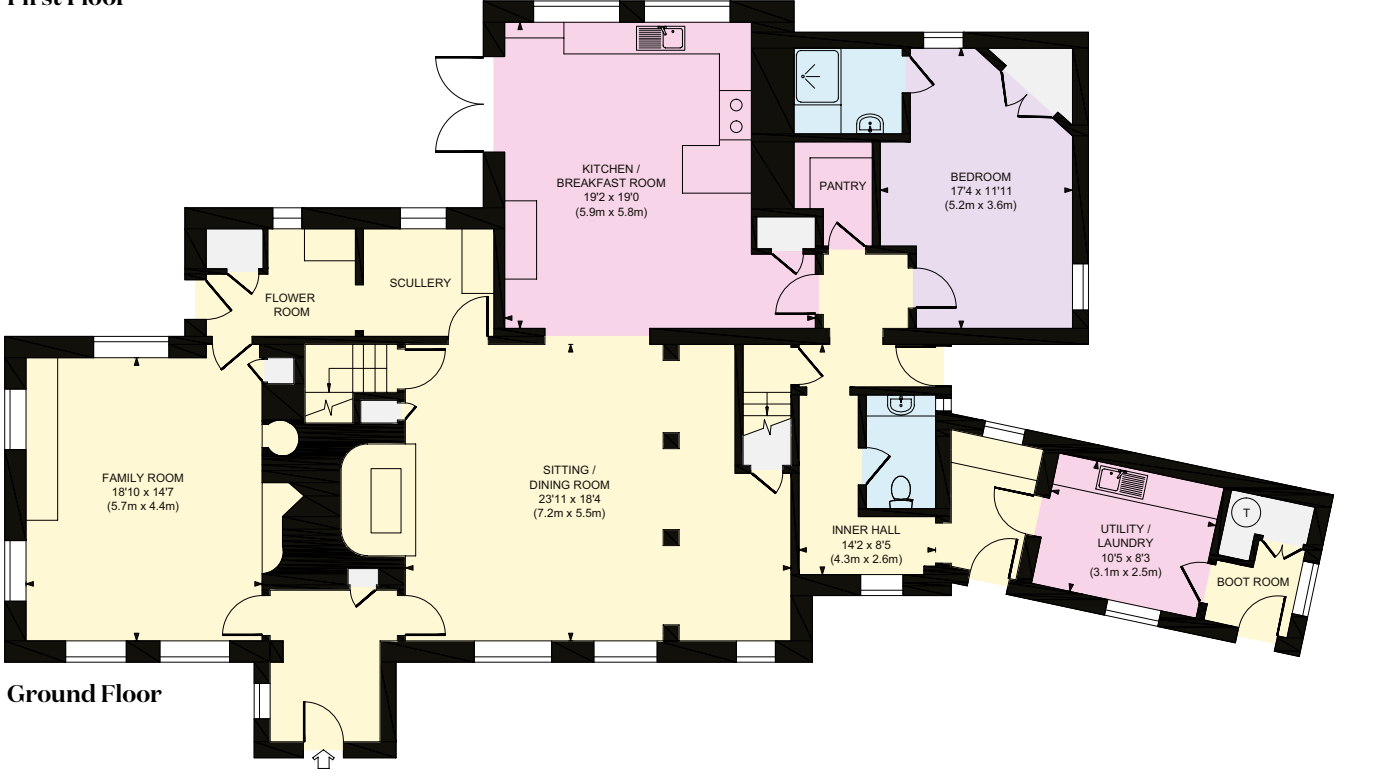
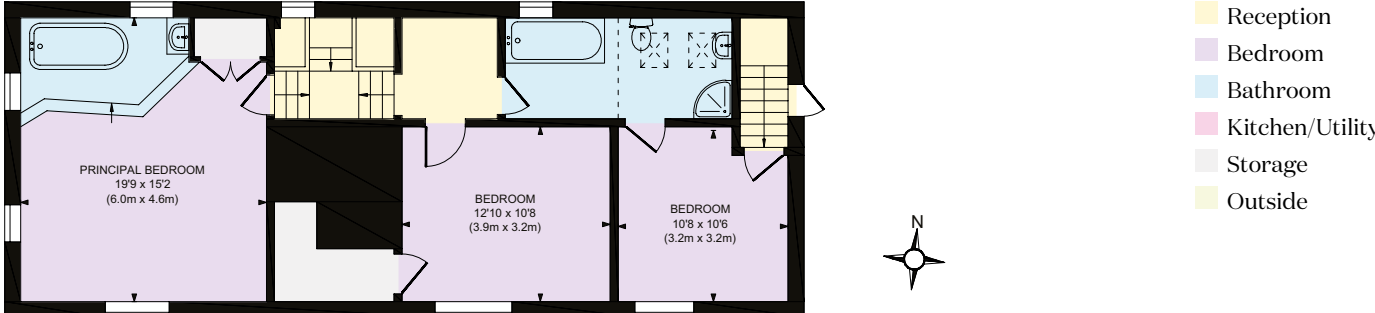
Directions: (GU27 3JF)

What3Words: flitting.stilleto.playfully

Viewings: All viewings are strictly by prior appointment with the sole selling agent.



Approximate Gross Internal Area =
Main House 2836 sq. ft / 263.49 sq. m
Annexe 748 sq. ft / 69.47 sq. m
Outbuilding 142 sq. ft / 13.17 sq. m
Garage 162 sq. ft / 15.05 sq. m
Total 3888 sq. ft / 361.18 sq. m



This plan is for layout guidance only. Not drawn to scale unless stated. Windows and door openings are approximate. Whilst every care is taken in the preparation of this plan, please check all dimensions, shapes and compass bearings before making any decisions reliant upon them.

I would be delighted
to tell you more.

Russell Grieve
01428 770560
russell.grieve@knightfrank.com

Knight Frank Haslemere
1 West Street, Haslemere
GU27 2AB

knightfrank.co.uk

Your partners in property

1. Particulars: These particulars are not an offer or contract, nor part of one. You should not rely on statements given by Knight Frank in the particulars, by word of mouth or in writing ("information") as being factually accurate about the property, its condition or its value. Neither Knight Frank nor any joint agent has any authority to make any representations about the property, and accordingly any information given is entirely without responsibility on the part of Knight Frank. 2. Material Information: Please note that the material information is provided to Knight Frank by third parties and is provided here as a guide only. While Knight Frank has taken steps to verify this information, we advise you to confirm the details of any such material information prior to any offer being submitted. If we are informed of changes to this information by the seller or another third party, we will use reasonable endeavours to update this as soon as practical. 3. Photos, Videos etc: The photographs, property videos and virtual viewings etc. show only certain parts of the property as they appeared at the time they were taken. Areas, measurements and distances given are approximate only. 4. Regulations etc: Any reference to alterations to, or use of, any part of the property does not mean that any necessary planning, building regulations or other consent has been obtained. A buyer must find out by inspection or in other ways that these matters have been properly dealt with and that all information is correct. 5. Fixtures and fittings: A list of the fitted carpets, curtains, light fittings and other items fixed to the property which are included in the sale (or may be available by separate negotiation) will be provided by the Seller's Solicitors. 6. VAT: The VAT position relating to the property may change without notice. 7. To find out how we process Personal Data, please refer to our Group Privacy Statement and other notices at <https://www.knightfrank.com/legals/privacy-statement>.

Particulars dated March 2025. Photographs and videos dated March 2025. All information is correct at the time of going to print. Knight Frank is the trading name of Knight Frank LLP. Knight Frank LLP is a limited liability partnership registered in England and Wales with registered number OC305934. Our registered office is at 55 Baker Street, London W1U 8AN. We use the term 'partner' to refer to a member of Knight Frank LLP, or an employee or consultant. A list of members names of Knight Frank LLP may be inspected at our registered office. If you do not want us to contact you further about our services then please contact us by either calling 020 3544 0692, email to marketing.help@knightfrank.com or post to our UK Residential Marketing Manager at our registered office (above) providing your name and address.