



Bepton Common, Bepton, West Sussex





A spacious detached family home, which has been extended and **modernised throughout** by its current owners.

Summary of accommodation

Ground Floor: Entrance hallway | Open plan kitchen/breakfast/living room
Utility room | Cloakroom | Family room | Study

First Floor: Principal bedroom with en suite bathroom | Guest suite
Three further bedrooms | Family bathroom

Outside: Terrace area | Lawned gardens to rear | Ample off road parking

In grounds of just over 1 acre







The property

Boasting the latest in technological advancements for a family home, this residence offers a seamless blend of comfort and sophistication.

The expansive open plan kitchen/breakfast/living room is flooded with natural light and features French windows that lead out to the rear terrace, creating a seamless indoor-outdoor flow. Complementing the kitchen is a convenient utility room, while a study and family room provide flexible spaces for work or relaxation. A cloakroom completes the ground floor layout.

Upstairs, the main bedroom awaits with its en suite bathroom and generous wardrobe space. Accompanying it, is a guest suite and three additional bedrooms, which are serviced by a family bathroom.

Outside, the property is set in just over one acre of gardens, featuring a private terrace area to the rear of the property perfect for al fresco dining and entertaining. A garage/outbuilding provides ample storage space, with parking and driveway to the front of the property ensuring convenience for multiple vehicles.



Location

Bepton Common is tucked away in the country hamlet of Bepton, approximately 0.9 miles west of Midhurst in an Area of Outstanding Natural Beauty, now incorporated within the newly designated South Downs National Park. The hamlet is home to both a public house (The Country Inn) and a church, and is surrounded by open countryside with a backdrop of the South Downs. Of note, the recently opened Park House Hotel offers spa, leisure and dining facilities and is approximately 1.5 miles away from the property.

The historic market town of Midhurst has a variety of shops for day to day needs, a golf club and the famous Cowdray Polo grounds. More extensive facilities are well catered for at Chichester and Petersfield, which lie about 12 and 9.5 miles away, respectively. There is access to London via the A3 at Petersfield, linking into the M25 and the National Motorway Network. A regular fast South West train service runs from Haslemere to London Waterloo, taking about 56 minutes. There is an excellent range of schools in the area, including Bedales, Ditcham Park and Churcher's at Petersfield, Seaford College near Petworth, Highfield and Brookham in Liphook and St Edmunds in Hindhead. Recreational facilities also include racing at Goodwood and Fontwell Park, as well as sailing on the South Coast.

In addition to the golf course in Midhurst, there are two courses in Petersfield and one in Pulborough. Access onto a network of footpaths and bridleways over the South Downs provide extensive opportunities for walking, riding and cycling.

Distances

Midhurst town centre 0.9 miles, Petersfield (A3) 9.5 miles (London Waterloo 66 minutes), Haslemere 10 miles (London Waterloo 54 minutes)
Chichester 12 miles (All distances and times are approximate)

Services

We are advised by our clients that the property has mains gas, mains electric, mains water and rainwater harvesting system.





Viewings

Strictly by appointment with agent.

Fixtures and Fittings

Only those mentioned in these sales particulars are included in the sale. All other items, such as fitted carpets, curtains, light fittings, garden ornaments etc., are specifically excluded but may be made available by separate negotiation.

Property information

Tenure: Freehold

Local Authority: Chichester County Council

Council Tax: Band G

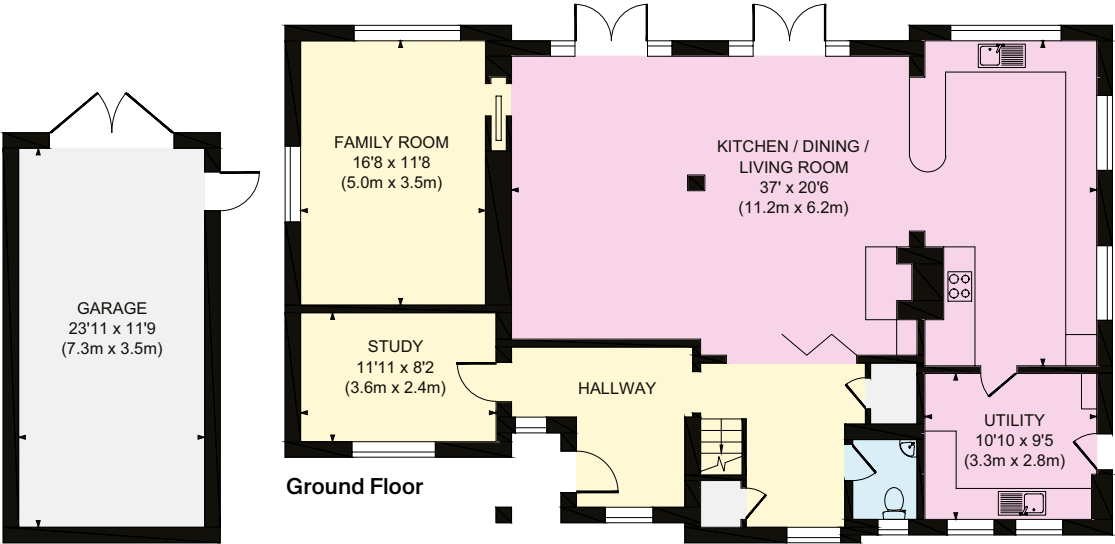
EPC Rating: C



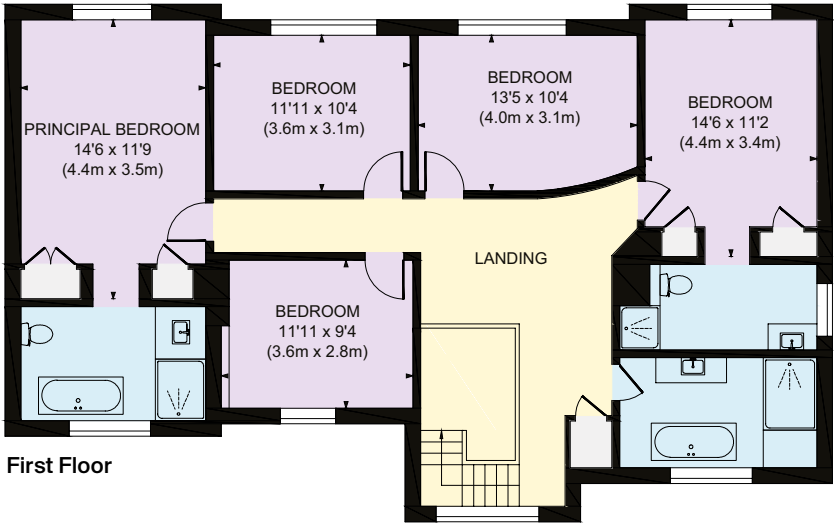
Approximate Gross Internal Floor Area
Main House 2850 sq. ft / 264 sq. m
Garage 281 sq. ft / 26.13 sq. m
Total 3131 sq. ft / 290.13 sq. m

This plan is for guidance only and must not be relied upon as a statement of fact. Attention is drawn to the Important Notice on the last page of the text of the Particulars.

- Reception
- Bedroom
- Bathroom
- Kitchen/Utility
- Storage
- Outside



Garage



First Floor

Knight Frank Haslemere
1 West Street
Haslemere
GU27 2AB
[knightfrank.co.uk](https://www.knightfrank.co.uk)

I would be delighted to tell you more

Kate Erlam
01428 770560
kate.erlam@knightfrank.com



Fixtures and fittings: A list of the fitted carpets, curtains, light fittings and other items fixed to the property which are included in the sale (or may be available by separate negotiation) will be provided by the Seller's Solicitors.

Important Notice: 1. Particulars: These particulars are not an offer or contract, nor part of one. You should not rely on statements by Knight Frank LLP in the particulars or by word of mouth or in writing ("information") as being factually accurate about the property, its condition or its value. Neither Knight Frank LLP nor any joint agent has any authority to make any representations about the property, and accordingly any information given is entirely without responsibility on the part of the agents, seller(s) or lessor(s). 2. Photos, Videos etc: The photographs, property videos and virtual viewings etc. show only certain parts of the property as they appeared at the time they were taken. Areas, measurements and distances given are approximate only. 3. Regulations etc: Any reference to alterations to, or use of, any part of the property does not mean that any necessary planning, building regulations or other consent has been obtained. A buyer or lessee must find out by inspection or in other ways that these matters have been properly dealt with and that all information is correct. 4. VAT: The VAT position relating to the property may change without notice. 5. To find out how we process Personal Data, please refer to our Group Privacy Statement and other notices at <https://www.knightfrank.com/legals/privacy-statement>.

Particulars dated May 2024. Photographs and videos dated April 2024.

All information is correct at the time of going to print. Knight Frank is the trading name of Knight Frank LLP. Knight Frank LLP is a limited liability partnership registered in England and Wales with registered number OC305934. Our registered office is at 55 Baker Street, London W1U 8AN. We use the term 'partner' to refer to a member of Knight Frank LLP, or an employee or consultant. A list of members names of Knight Frank LLP may be inspected at our registered office. If you do not want us to contact you further about our services then please contact us by either calling 020 3544 0692, email to marketing.help@knightfrank.com or post to our UK Residential Marketing Manager at our registered office (above) providing your name and address. Brochure by [wordperfectprint.com](https://www.wordperfectprint.com)

