

PARSONS
COMPANY



5 Irwin Close, Reepham, NR10 4EQ
£275,000



5 Irwin Close, Reepham, NR10 4EQ

£275,000

A well presented two-double bedroom detached bungalow situated in the sought-after town of Reepham. This property is ideal for someone looking to downsize but have amenities close by.

You are greeted by a separate entrance hall, a spacious living room with patio doors to garden, a modern fitted kitchen with integrated oven/hob and recess for other appliances. Further on, there are two double bedrooms, a separate WC and shower room; these two rooms could be knocked through to offer a more spacious bathroom.

Outside, to the front, is off road parking for two vehicles, side access and a garage with up & over door. To the rear, is a secluded garden with raised patio leading to laid grass with surround flower beds and shrubs.

Services:

Oil central heating. Mains water, electricity and drainage are connected.

For room measurements please click on the floor plan option.

Description



Situation

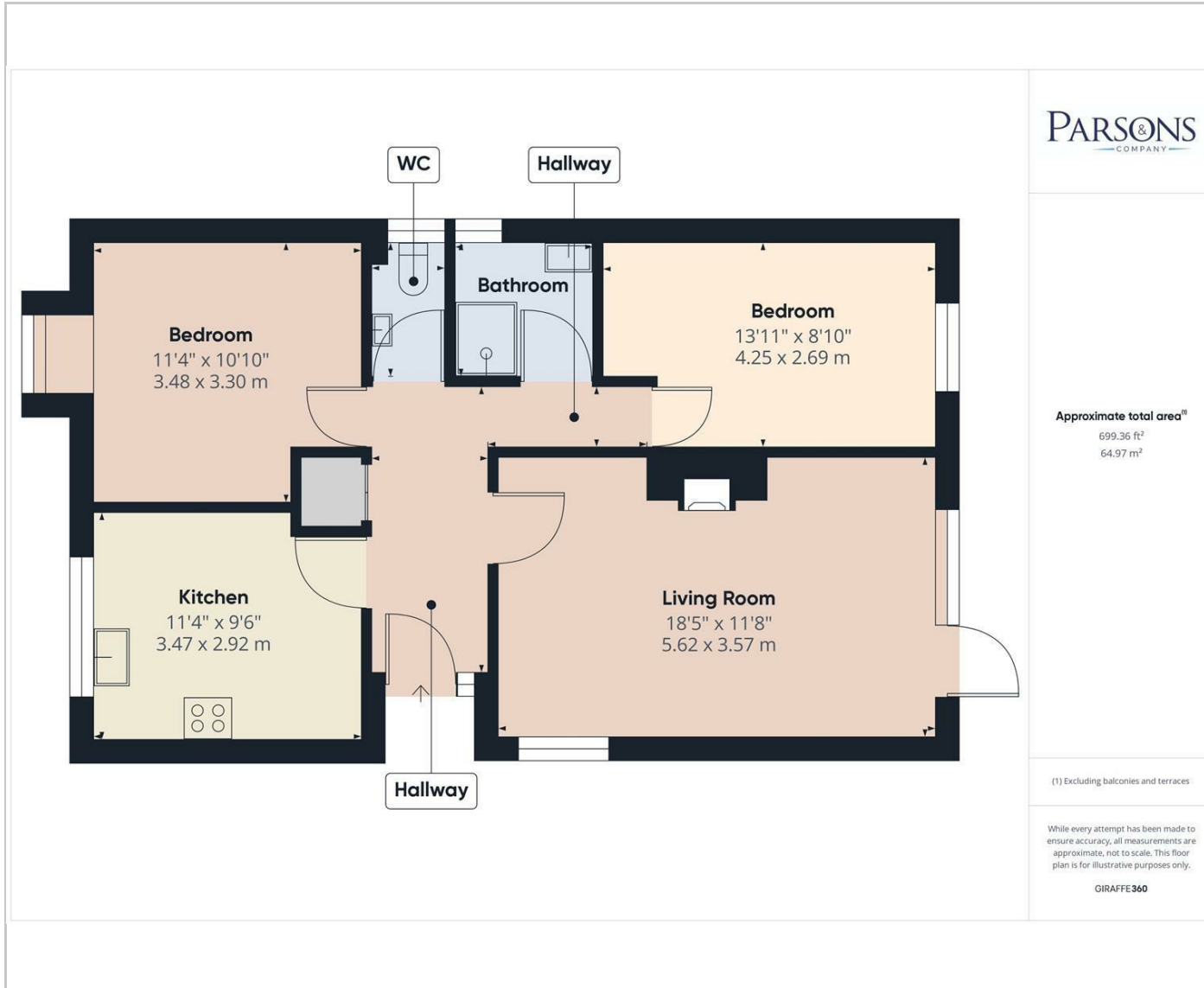
null

Council Tax Band: C

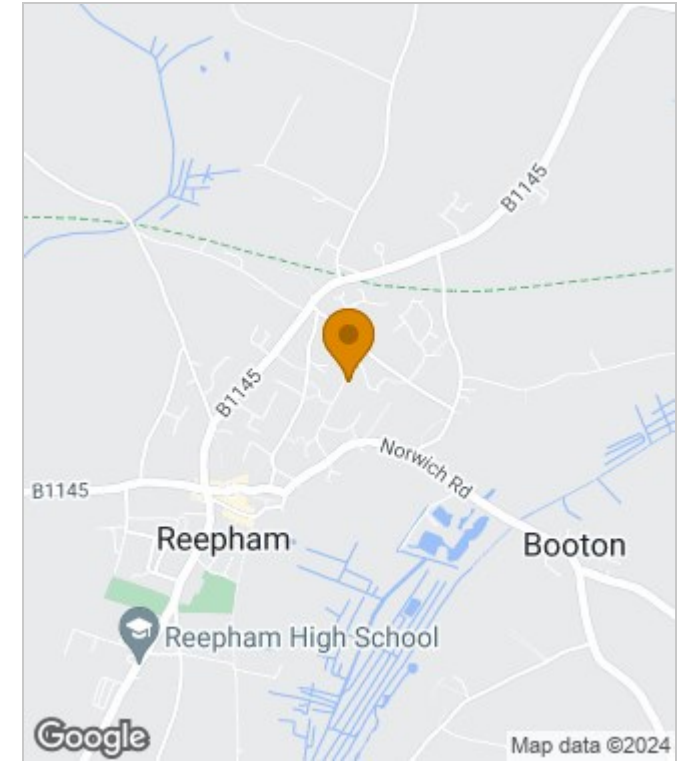
Available:



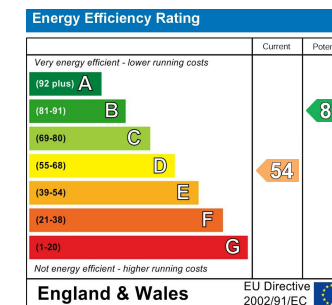
Floor Plans



Area Map



Energy Performance Graph



These particulars, whilst believed to be accurate are set out as a general outline only for guidance and do not constitute any part of an offer or contract. Intending purchasers should not rely on them as statements of representation of fact, but must satisfy themselves by inspection or otherwise as to their accuracy. No person in this firm's employment has the authority to make or give any representation or warranty in respect of the property.