



ASHWORTH HOLME
Sales · Lettings · Property Management



87 ROEBUCK LANE, M33 7SZ
£1,300 PER CALENDAR MONTH



2



1



1



DESCRIPTION

Beautifully Updated 2-Bed End-Terrace – Roebuck Lane, Sale M33

Located in a sought-after part of Sale, this freshly decorated 2-bedroom end-terrace home offers stylish and comfortable living just moments from local amenities and transport links.

Step inside to discover a brand-new modern kitchen and a contemporary bathroom, both recently fitted to a high standard. The property has been newly decorated throughout, creating a light, clean and inviting space that's ready to move into.

Situated on a quiet residential street, this home also benefits from the added privacy of being end-terrace, with easy access to Sale town centre, local schools, and green spaces.

AVAILABLE NOW

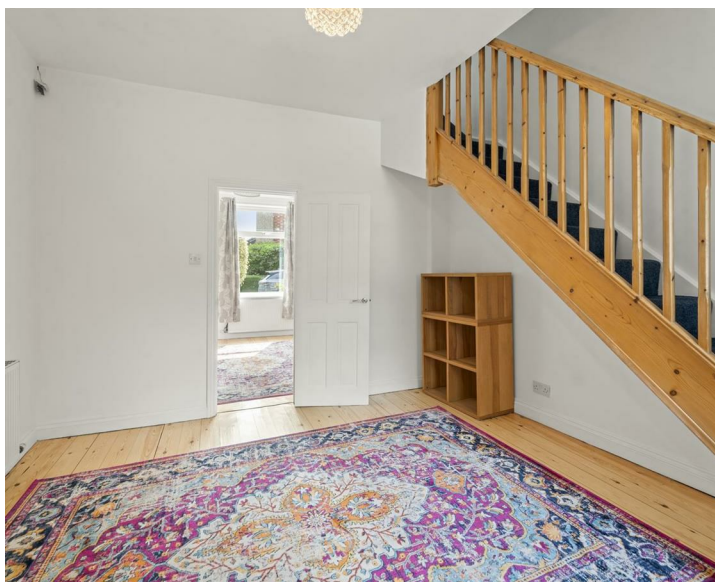
Minimum 12 month tenancy. Sorry no pets or smokers.

£100 holding deposit is applicable. Please note Ashworth Holme are a member of 'The Property Redress Scheme' and the 'CMP' client money protection scheme.

KEY FEATURES

- 2 generously sized bedrooms
- Stylish new bathroom suite
- End-terrace position for added privacy
- Tenancy Length 12 months
- Brand new kitchen with modern appliances
- Freshly decorated throughout
- Excellent location in M33 – close to shops, schools, and Metrolink
- Council Tax Band B







ASHWORTH HOLME

16-18 CROSS STREET, SALE, CHESHIRE M33 7AE
T 0161 973 6680 E INFO@ASHWORTHHOLME.CO.UK
WWW.ASHWORTHHOLME.CO.UK

Energy Efficiency Rating		
	Current	Potential
Very energy efficient - lower running costs		
(92 plus) A		
(81-91) B		
(69-80) C		
(55-68) D		
(39-54) E		
(21-38) F		
(1-20) G		
Not energy efficient - higher running costs		
England & Wales		EU Directive 2002/91/EC

Environmental Impact (CO ₂) Rating		
	Current	Potential
Very environmentally friendly - lower CO ₂ emissions		
(92 plus) A		
(81-91) B		
(69-80) C		
(55-68) D		
(39-54) E		
(21-38) F		
(1-20) G		
Not environmentally friendly - higher CO ₂ emissions		
England & Wales		EU Directive 2002/91/EC

