



Thistle Walk, Ayr, South Ayrshire, KA7 3XH

Offers Over £80,000

🛏️ 2 🚿 1 🚻 1



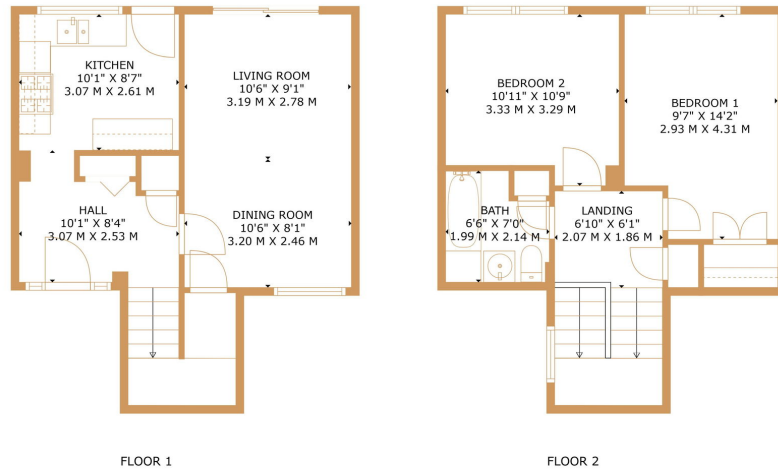
Immaculately presented, well proportioned two-bedroom mid-terrace home, in the established residential enclave of Kincaidston, this property offers the perfect blend of accessibility and peaceful living on the outskirts of Ayr.

On the Ground Floor a welcoming entrance hall leads to a bright and inviting living / dining room, flooded with natural light from the large patio doors, which opens up onto the large expansive decking area to the rear garden.

The well-appointed kitchen provides ample space for creating family meals, while upstairs, two generously sized bedrooms and modern bathroom offer comfortable accommodation for the whole family.

Positioned with excellent access to the A77 trunk road, the property boasts swift connections to both Glasgow and local destinations. Families will appreciate the proximity to well-regarded schools, while everyday conveniences are taken care of with local shops within walking distance.

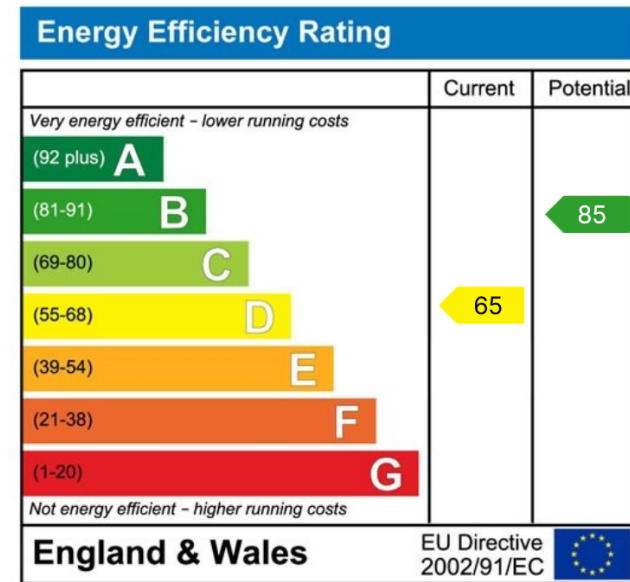




TOTAL: 815 sq. ft. 76 m²
 FLOOR 1: 407 sq. ft. 38 m²; FLOOR 2: 408 sq. ft. 38 m²
 SIZES AND DIMENSIONS ARE APPROXIMATE. ACTUAL MAY VARY. © FOUR WALLS MEDIA



- Immaculately Presented
- Modern Kitchen
- Sought After Location
- Expansive Decking Area
- EPC Rating Band D (65)
- 2 Bedrooms
- Family Bathroom
- Close to Schools and Local Amenities
- Excellent Transport Links
- Council Tax Band B



01292 437 045
 office@belmontproperty.com
 24 Dalmellington Road, Ayr, KA7 2PZ

belmontproperty.com

Agents Note: Whilst every care has been taken to prepare these sales particulars, they are for guidance purposes only. All measurements are approximate and for general guidance purposes only and whilst every care has been taken to ensure their accuracy, they should not be relied upon and potential buyers are advised to recheck the measurements