



Mountgrove Road, Finsbury Park

In Excess of £0

**DAVID
ANDREW**

your
most
valuable
asset

Mountgrove Road

London

Introducing a one-bedroom, top floor flat apartment, with 541sqft/50.3sqm of living space.

The flat offers a good size reception room facing Mountgrove Road and a separate kitchen, located on the lower level. The property also features a good size bedroom and a spacious bedroom to the rear of the property. This flat would make an ideal first time buy or investment in a great location. Mountgrove Road is quiet & perfectly located for the local amenities of Highbury, and the delightful green spaces of Clissold Park & Highbury Fields. Excellent transport links are provided via Highbury & Islington Station, Arsenal and Finsbury Park (National Rail, Piccadilly & Victoria Line), plus many, well-connected local bus routes.

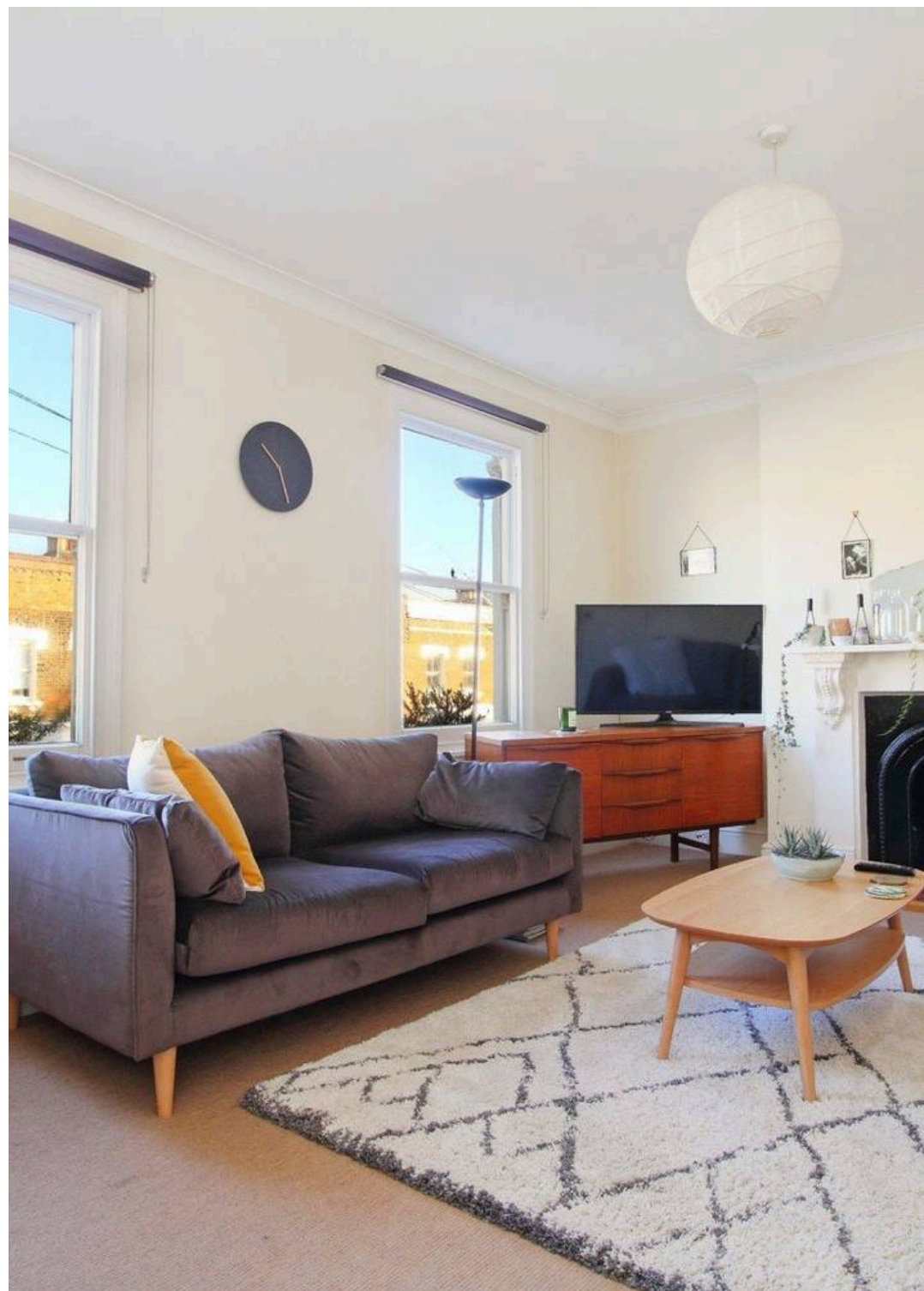
Council Tax band: TBD

Tenure: Share of Freehold

EPC Energy Efficiency Rating: D

EPC Environmental Impact Rating: D

- Top Floor One Bedroom
- Period Conversion
- Large & Bright Reception
- 541sqft/50.3sqm
- Split Level
- Close To Clissold Park
- Great Location
- Good Transport Links



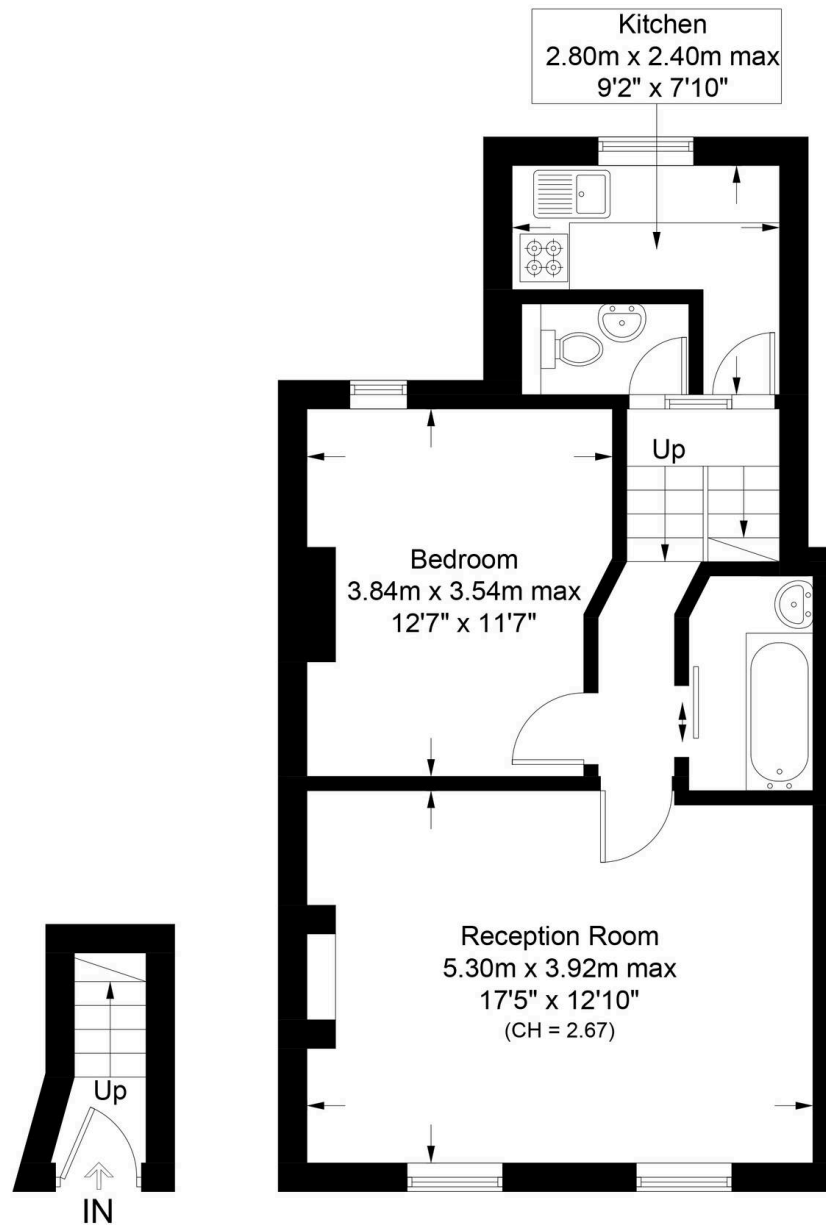




Mountgrove Road, N5

Approximate Gross Internal Area = 541 sq ft / 50.3 sq m

**DAVID
ANDREW** | your
most
valuable
asset



Ground Floor



**Certified
Property
Measurer**

First Floor

This plan is for layout guidance only. Not drawn to scale unless stated. Windows and door openings are approximate. Whilst every care is taken in the preparation of this plan, please check all dimensions, shapes and compass bearings before making any decisions reliant upon them. (ID1203028)

**DAVID
ANDREW** | your
most
valuable
asset

as been exercised in the
of these particulars,
ut the property must not be
as representations of
fact. Prospective applicants
and rely upon their own
d those of professional
s. David Andrew Estates
ility for any error contained

in these particulars.

Archway Office

671 Holloway Road
London, N19 5SE

T (0)20 7619 3750

Highbury Office

90 Highbury Park
London, N5 2XE

T (0)20 7354 9111

Finsbury Park Office

167 Stroud Green Road
London, N4 3PZ

T (0)20 7281 2000

Property Management Office

235 Blackstock Road
London, N5 2LL

T (0)20 7354 9222

scan to book
a viewing

