



Highbury Grange, N5 2QF
£400,000

**DAVID
ANDREW** | your
most
valuable
asset

Highbury Grange, N5 2QF

Introducing a contemporary and stylish one-bedroom flat located in the sought-after Highbury Barn area, offering a prime opportunity for modern urban living. Situated on the third floor of a well-maintained building with a convenient lift, this spacious flat provides a comfortable retreat within easy reach of the vibrant amenities of North London.

Upon entering the property, residents are greeted by a bright and airy living space that has been thoughtfully designed to maximise comfort and functionality. The open-plan layout seamlessly connects the living room and kitchen, creating an inviting atmosphere perfect for entertaining guests or relaxing after a long day.

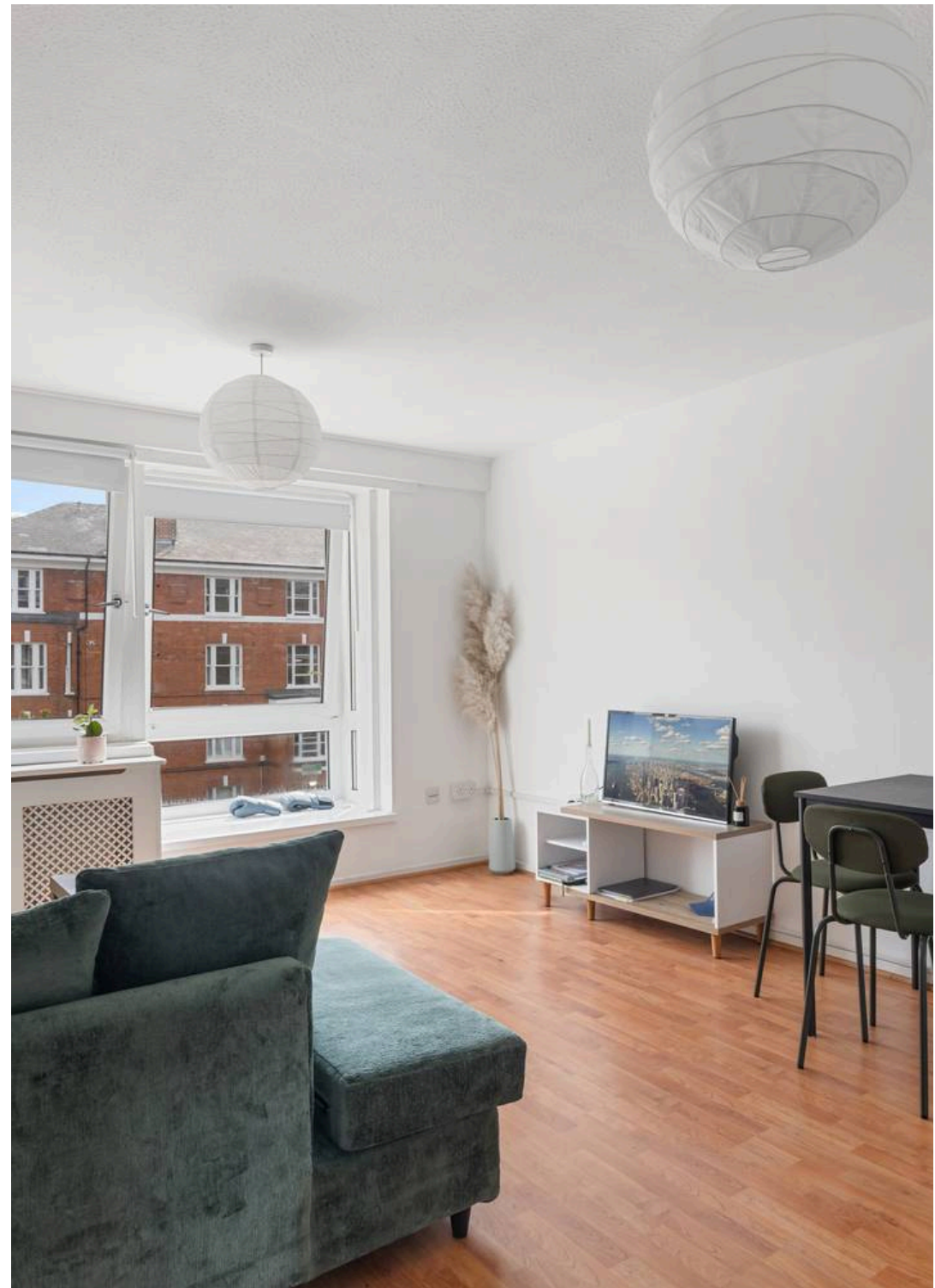
The bedroom, generously-sized and bathed in natural light, offers a peaceful sanctuary for rest and relaxation. With ample storage space and a neutral colour palette, the bedroom provides a versatile canvas for personalisation and customisation.

Located in close proximity to parks, shops, and eateries, this property boasts a prime location that caters to a wide range of lifestyles. Residents can enjoy leisurely strolls through the nearby Highbury Fields or take advantage of the green spaces at Clissold Park, both just a stone's throw away from the property.

For those with a penchant for exploration, excellent transport links provide easy access to the wider city, allowing residents to seamlessly navigate the bustling streets of London. Whether commuting to work or discovering new cultural hotspots, the convenience of the location ensures that residents are never far from the action.

In addition to its desirable location, the property also benefits from a thriving neighbourhood filled with trendy cafes, boutique shops, and local amenities. From artisanal bakeries to charming bistros, residents can experience the best of urban living right at their doorstep.

Don't miss the opportunity to make this enticing one-bedroom flat your new home. With its prime location, modern amenities, and chic design, this property offers a unique blend of comfort and convenience in the heart of Highbury Barn. Schedule a viewing today and experience the best of city living in this





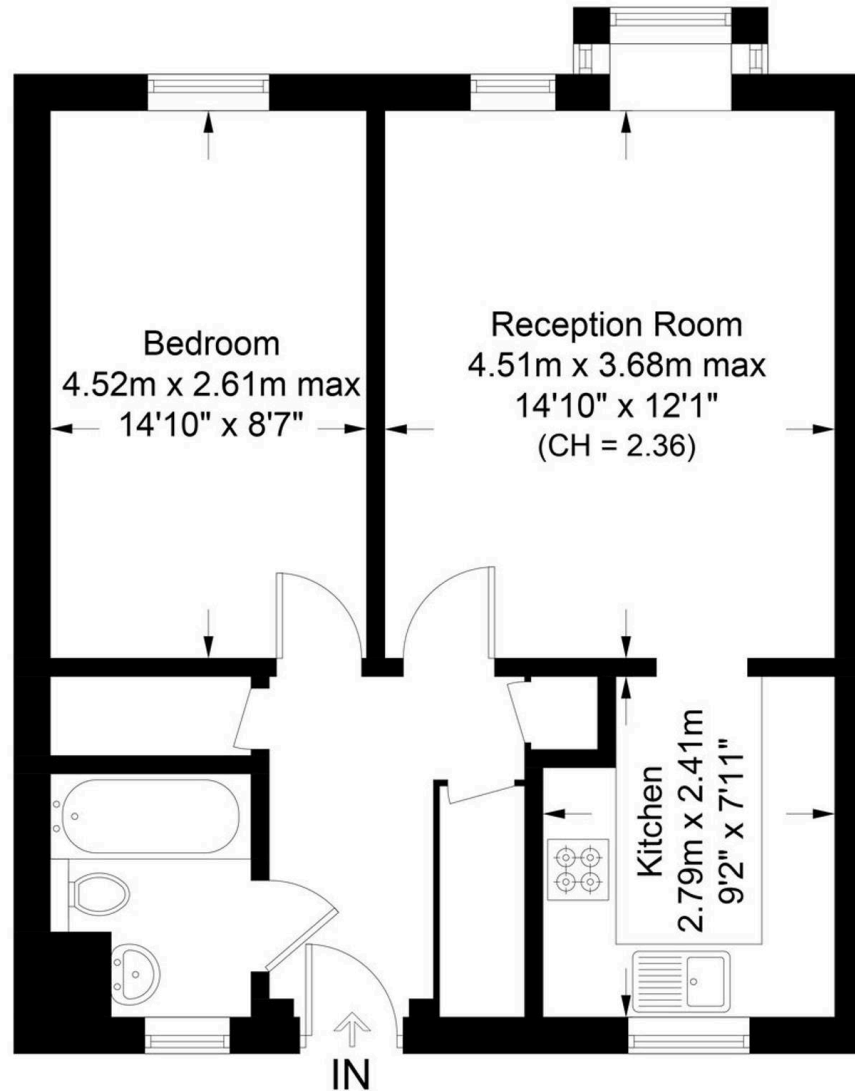




Woodstock House, N5

Approximate Gross Internal Area = 519 sq ft / 48.2 sq m

**DAVID
ANDREW** | your
most
valuable
asset



Third Floor

scan to book
a viewing



**Certified
Property
Measurer**

This plan is for layout guidance only. Not drawn to scale unless stated. Windows and door openings are approximate. Whilst every care is taken in the preparation of this plan, please check all dimensions, shapes and compass bearings before making any decisions reliant upon them. (ID1191593)

**DAVID
ANDREW** | your
most
valuable
asset

has been exercised in the of these particulars, about the property must not be in as representations of or fact. Prospective applicants and rely upon their own and those of professional ves. David Andrew Estates liability for any error contained in these particulars.

Archway Office

671 Holloway Road
London, N19 5SE

T (0)20 7619 3750

Highbury Office

90 Highbury Park
London, N5 2XE

T (0)20 7354 9111

Finsbury Park Office

167 Stroud Green Road
London, N4 3PZ

T (0)20 7281 2000

Property Management Office

235 Blackstock Road
London, N5 2LL

T (0)20 7354 9222

