



Flat 2, 149 Stoke Newington High Street, London
£2,000 PCM

**DAVID
ANDREW** | your
most
valuable
asset

Flat 2

149 Stoke Newington High Street, London

Tastefully designed modern one-bedroom flat on the first floor of a Victorian conversion in N16.

This first-floor conversion offers plenty of natural light, including an open-plan lounge and modern kitchen, a double bedroom, and a sleek bathroom design with brick tiles. The apartment offers 429 sq. ft / 39 sq. m of bright living space and is offered on a part-furnished basis from the 18th June 2025

Council Tax band: TBD

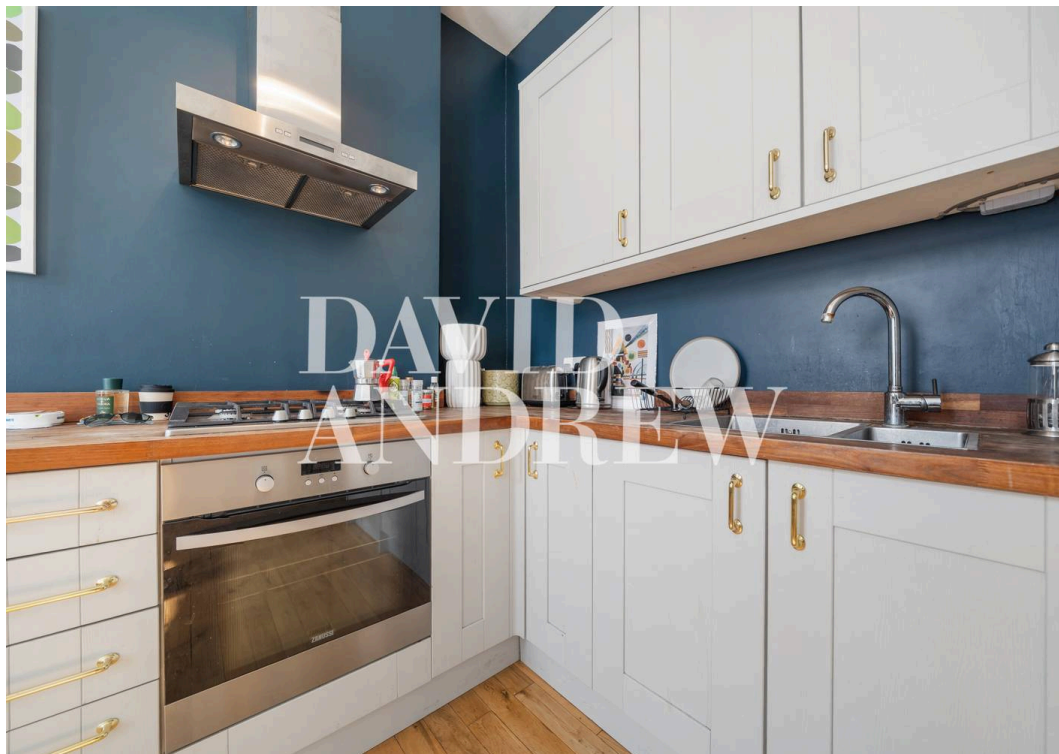
Tenure: Leasehold

EPC Energy Efficiency Rating: C

EPC Environmental Impact Rating: C

- Modern one bedroom apartment
- First floor apartment
- Modern design in Victorian conversion
- 429 sq.ft / 39 sqm
- Hard wood flooring throughout
- Close to Church street
- Part furnished
- Available 18th June 2025



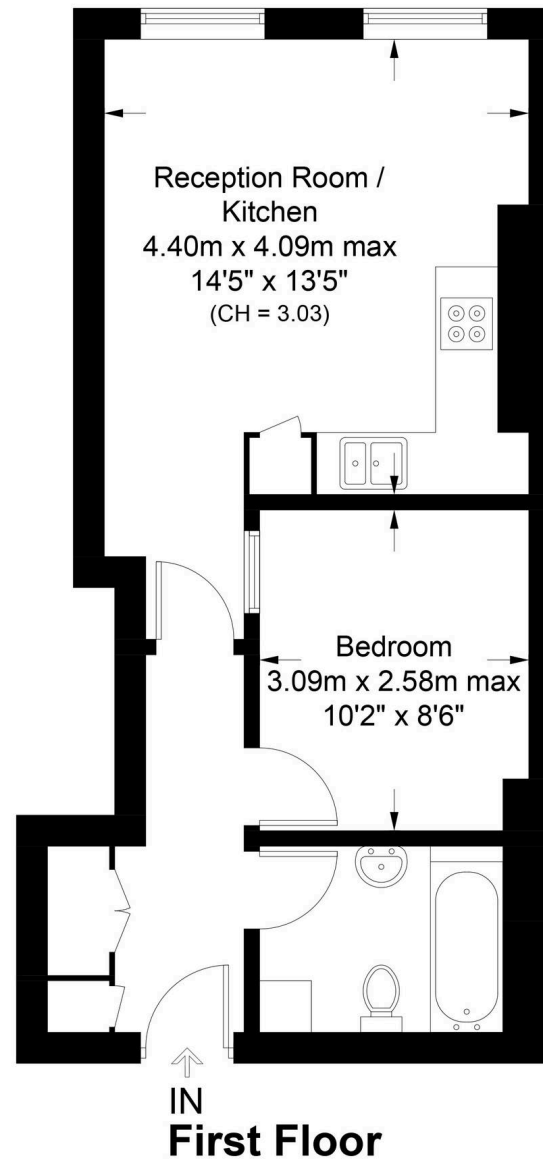




Stoke Newington High Street, N16

Approximate Gross Internal Area = 424 sq ft / 39.4 sq m

**DAVID
ANDREW** | your
most
valuable
asset



Archway Office

671 Holloway Road
London, N19 5SE

T (0)20 7619 3750

Highbury Office

90 Highbury Park
London, N5 2XE

T (0)20 7354 9111

Finsbury Park Office

167 Stroud Green Road
London, N4 3PZ

T (0)20 7281 2000

Property Management Office

235 Blackstock Road
London, N5 2LL

T (0)20 7354 9222

scan to book
a viewing



**Certified
Property
Measurer**

This plan is for layout guidance only. Not drawn to scale unless stated. Windows and door openings are approximate. Whilst every care is taken in the preparation of this plan, please check all dimensions, shapes and compass bearings before making any decisions reliant upon them. (ID1197316)

**DAVID
ANDREW** | your
most
valuable
asset

Note:
care has been exercised in the
tion of these particulars,
nts about the property must not be
upon as representations of
nts or fact. Prospective applicants
take and rely upon their own
is and those of professional
ntatives. David Andrew Estates
no liability for any error contained
in these particulars.



safeagent