



Flat 15, Hutchings Wharf, 1 Hutchings Street  
£2,750 PCM

**DAVID  
ANDREW**

your  
most  
valuable  
asset



# Flat 15

## Hutchings Wharf, London

Nestled in a prime location with breathtaking views of the Thames, this immaculate two-bedroom offers a private balcony. Residents can soak in the captivating river vistas and enjoy alfresco dining in absolute tranquility.

Access to this exquisite apartment is made easy and secure through the gated entrance, ensuring privacy and peace of mind. Residents can also benefit from the convenience of secure underground parking, making daily commutes hassle-free. The spacious semi-open plan lounge and kitchen are ideal for entertaining guests, while the two bathrooms offer both comfort and functionality. This exceptional property is available from 3rd June 2025 on a furnished basis.

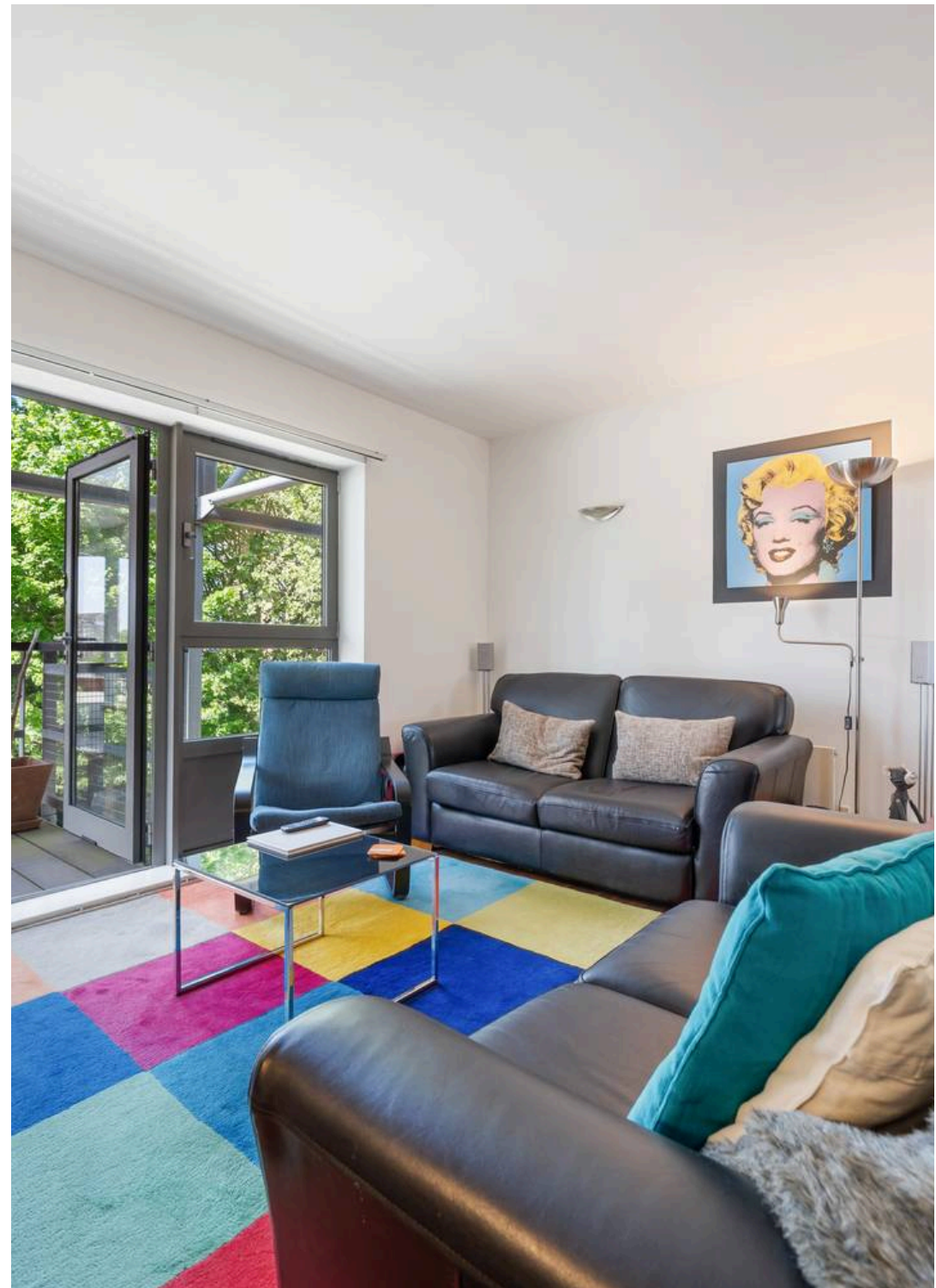
Council Tax band: D

Tenure: Leasehold

EPC Energy Efficiency Rating: B

EPC Environmental Impact Rating: B

- Two bedroom apartment
- Private balcony
- Secure gated entrance
- Views of the Thames
- Secure underground parking
- spacious semi open plan lounge & kitchen
- Two bathrooms
- Available 3rd June 2025









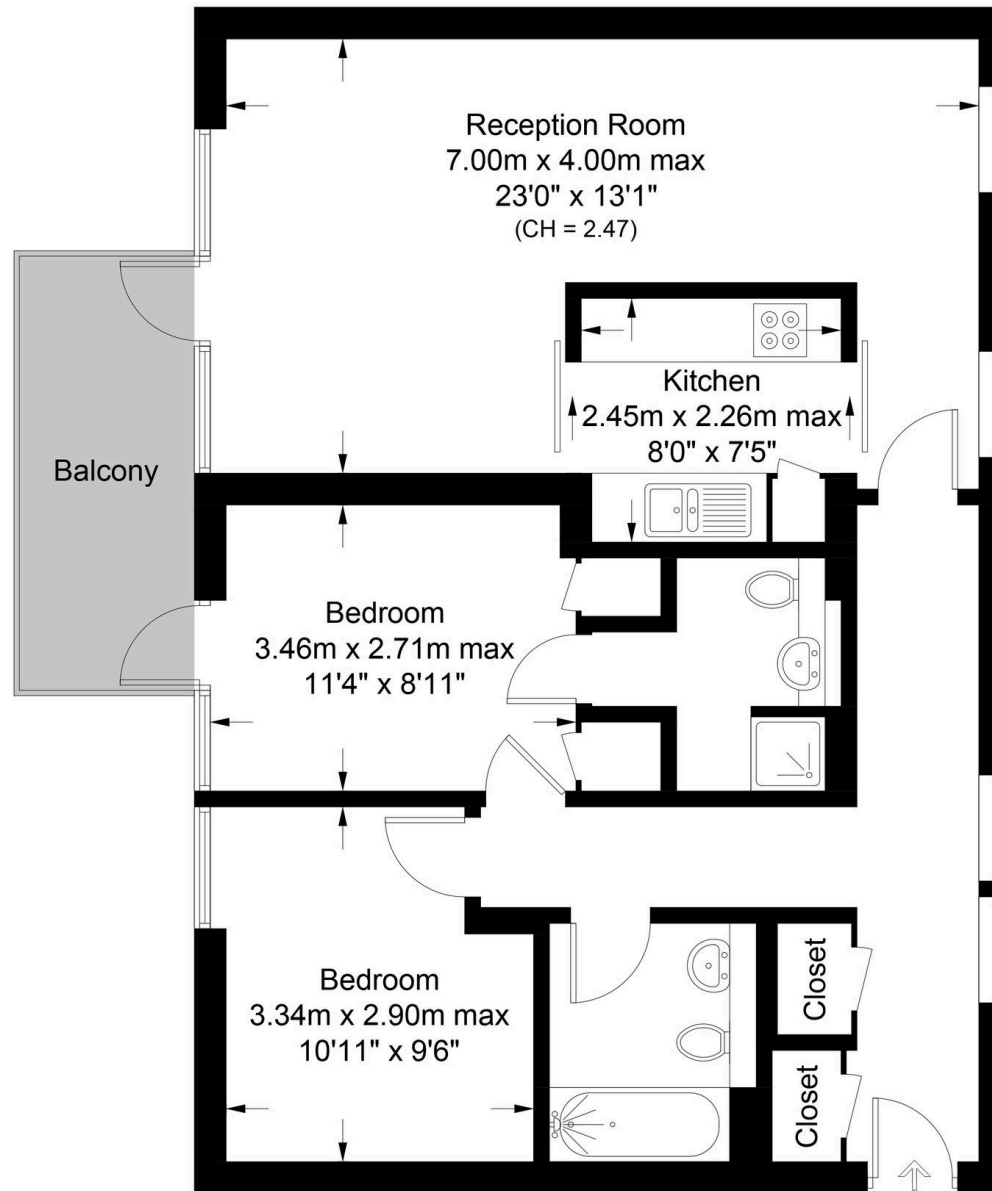


## Hutchings Wharf, E14

Approximate Gross Internal Area = 821 sq ft / 76.3 sq m

**DAVID  
ANDREW**

your  
most  
valuable  
asset



### Second Floor

scan to book  
a viewing



**Certified  
Property  
Measurer**

This plan is for layout guidance only. Not drawn to scale unless stated. Windows and door openings are approximate. Whilst every care is taken in the preparation of this plan, please check all dimensions, shapes and compass bearings before making any decisions reliant upon them. (ID1197317)

**DAVID  
ANDREW** your  
most  
valuable  
asset

as been exercised in the  
of these particulars,  
out the property must not be  
as representations of  
fact. Prospective applicants  
and rely upon their own  
those of professional  
s. David Andrew Estates  
ility for any error contained

in these particulars.

#### Archway Office

671 Holloway Road  
London, N19 5SE

T (0)20 7619 3750

#### Highbury Office

90 Highbury Park  
London, N5 2XE

T (0)20 7354 9111

#### Finsbury Park Office

167 Stroud Green Road  
London, N4 3PZ

T (0)20 7281 2000

#### Property Management Office

235 Blackstock Road  
London, N5 2LL

T (0)20 7354 9222



**safeagent**