



Radwell Court, Casbeard Street N4 2GD
£590,000

Radwell Court, Casbeard Street N4 2GD

A stunning, two-bedroom apartment set across the third floor of a modern RIBA-award-winning development with dual lift access and an internal residents-only courtyard. Offering plenty of light throughout, the space comprises; an entrance hallway inclusive of a built-in storage and utility room; an open-plan kitchen diner offering integrated appliances, leading to a dual aspect reception area with double doors opening out to the private terrace; two double bedrooms, a full bathroom suite off the main hallway. Radwell Court is minutes away to the beautiful Clissold Park & a five-minute walk from Stoke Newington's ever-popular Church Street, while Finsbury Park, Woodberry Wetlands & Highbury Fields are all close by. Excellent transport links are provided via Manor House, Finsbury Park & Arsenal stations & several local bus routes.

Council Tax band: D

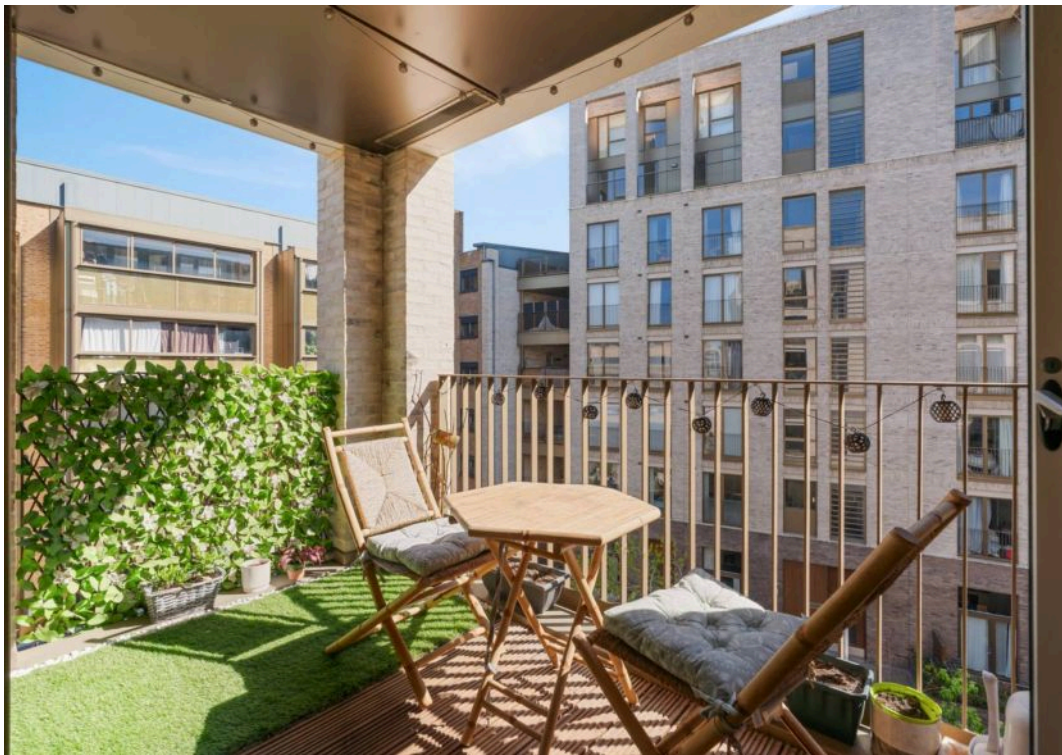
Tenure: Leasehold

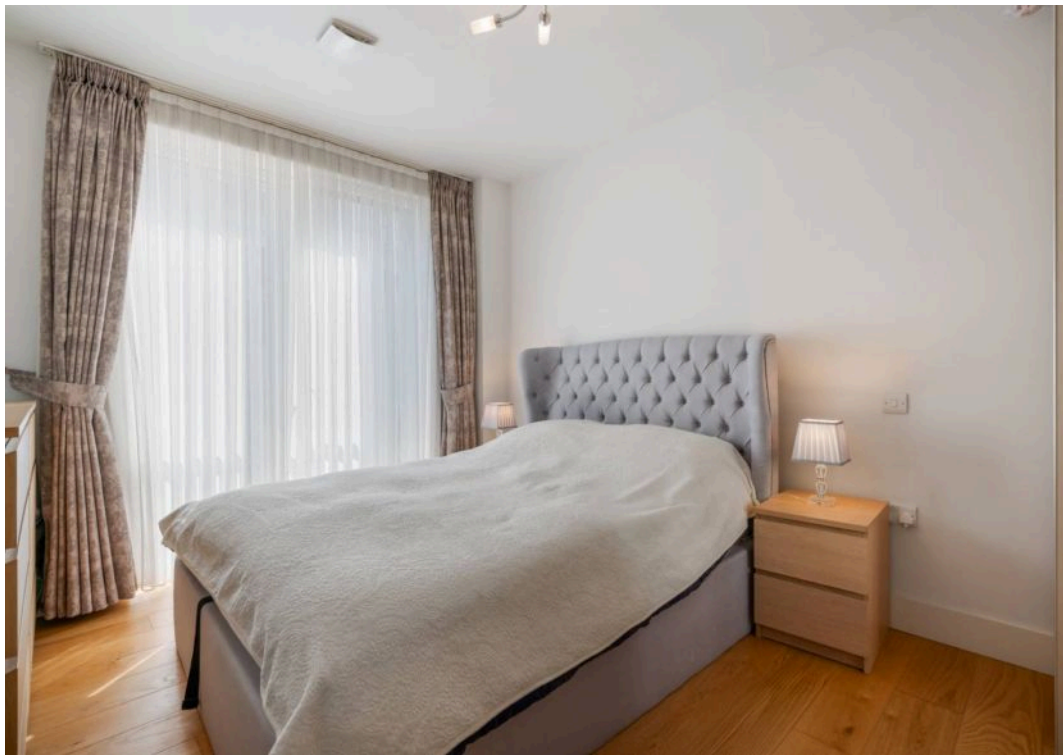
EPC Energy Efficiency Rating: B

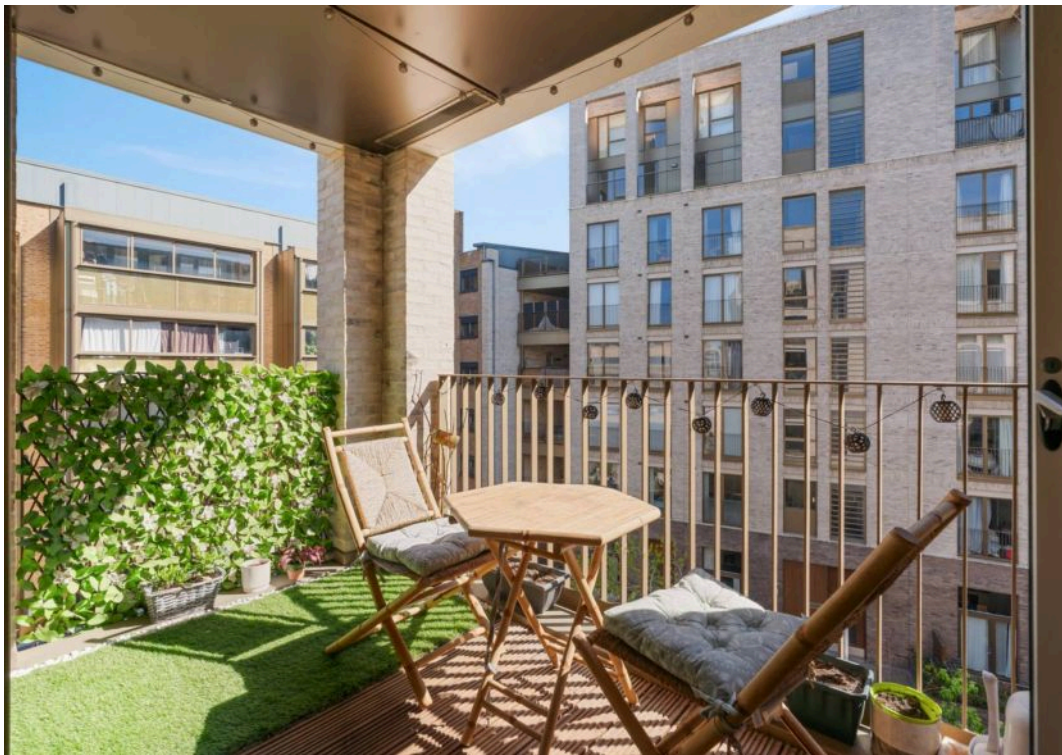
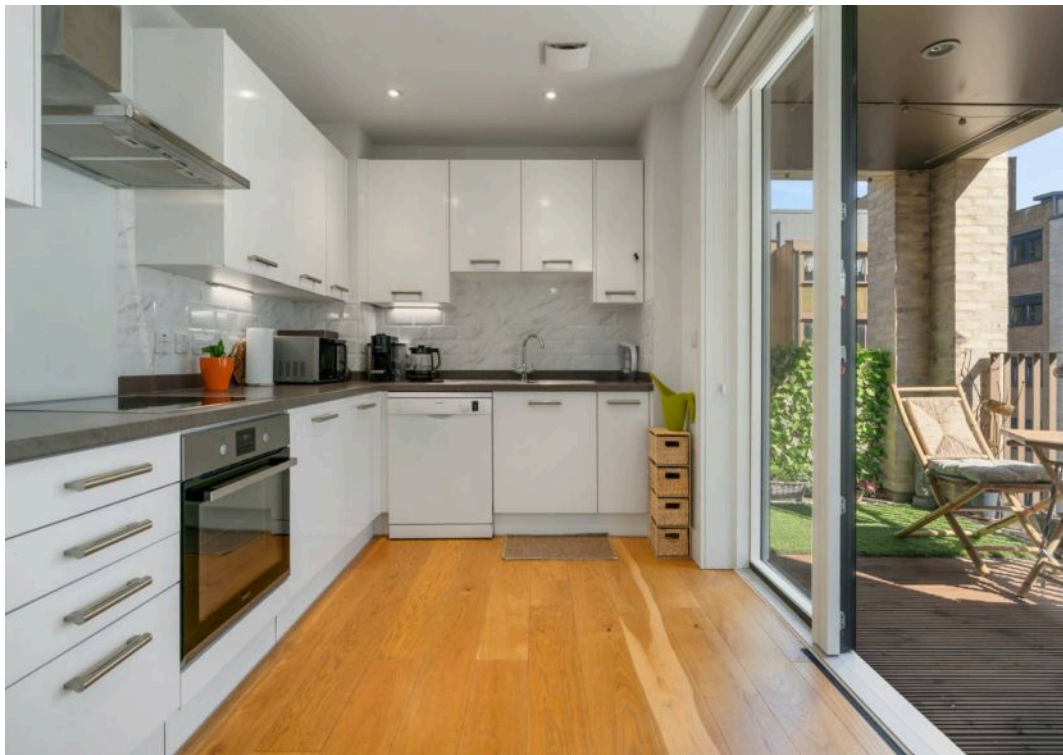
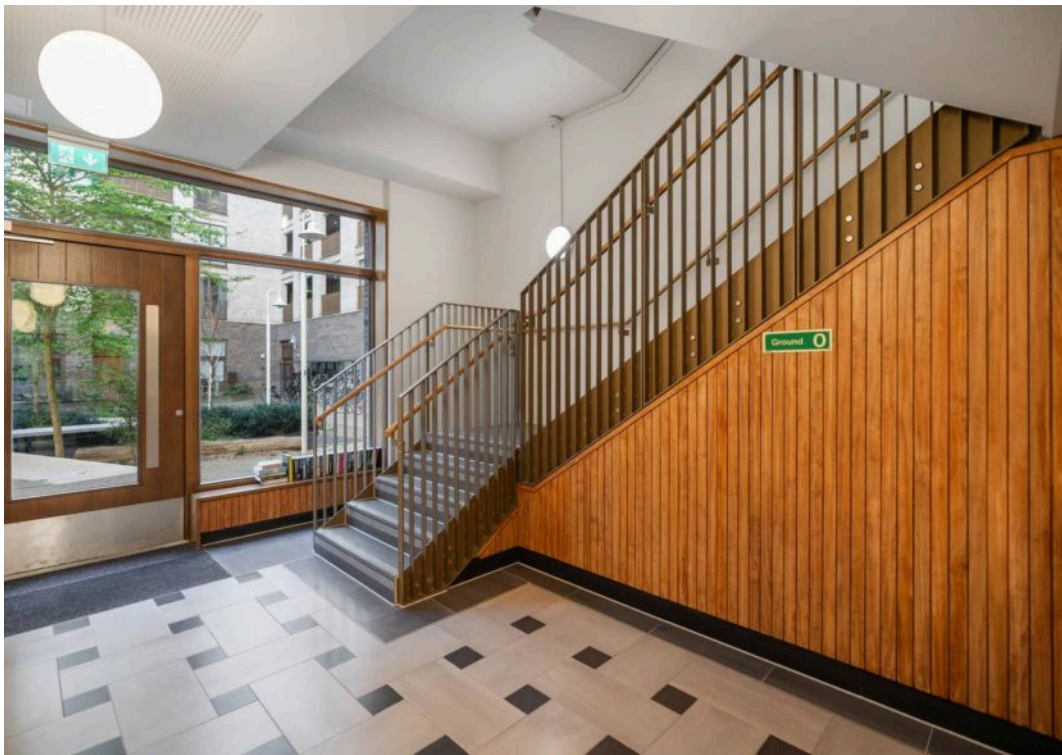
EPC Environmental Impact Rating: B

- Two Double Bedrooms
- Private Balcony
- Very Well Presented
- Third Floor
- 715sqft/66.4sqm
- Close to Clissold Park
- Great Location
- Good Transport Links
- Service Charge: £3144 p.a









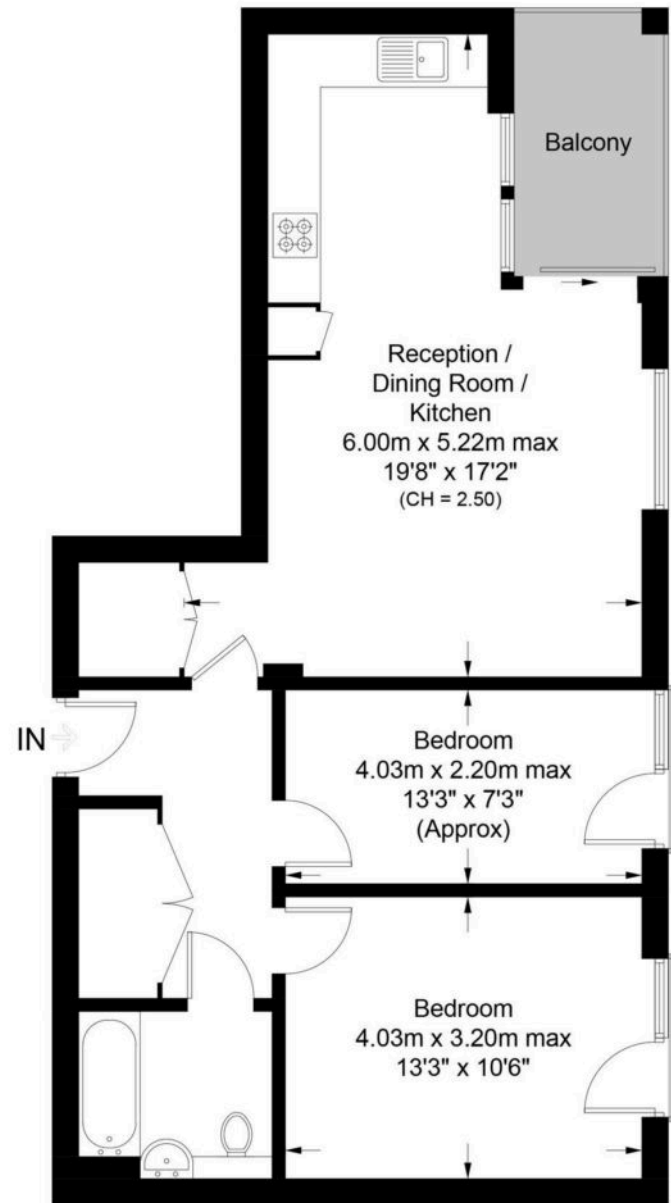


Radwell Court, N4

Approximate Gross Internal Area = 715 sq ft / 66.4 sq m

**DAVID
ANDREW**

your
most
valuable
asset



Third Floor

This plan is for layout guidance only. Not drawn to scale unless stated. Windows and door openings are approximate. Whilst every care is taken in the preparation of this plan, please check all dimensions, shapes and compass bearings before making any decisions reliant upon them. (ID1193100)



**Certified
Property
Measurer**

**DAVID
ANDREW**
your
most
valuable
asset

has been exercised in the
of these particulars,
out the property must not be
as representations of
r fact. Prospective applicants
and rely upon their own
id those of professional
es. David Andrew Estates
bility for any error contained
in these particulars.

Archway Office

671 Holloway Road
London, N19 5SE

T (0)20 7619 3750

Highbury Office

90 Highbury Park
London, N5 2XE

T (0)20 7354 9111

Finsbury Park Office

167 Stroud Green Road
London, N4 3PZ

T (0)20 7281 2000

Property Management Office

235 Blackstock Road
London, N5 2LL

T (0)20 7354 9222



safeagent

scan to book
a viewing

