



Mountgrove Road, London, N4 2LT  
£400,000

**DAVID  
ANDREW**

your  
most  
valuable  
asset



# Mountgrove Road, N5 2LT

Highbury, London

Two bedroom apartment located on the first floor of this conversion, in a sought-after area in Highbury. Arranged on the one level, this light-filled apartment has good height ceilings throughout, with 579sqft/53.8sqm of living space. This apartment comprises of a good size reception room with an open kitchen which is fully fitted, two good size bedrooms located and a family bathroom. Mountgrove Road is well-located street in close proximity to shops and cafes, just 5 minutes' walk to Highbury & Stoke Newington, as well as local parks (Clissold Park, Finsbury Park, Gillespie Nature Reserve and Woodberry Wetlands). It is served by unparalleled access to Zone Two Victoria/Piccadilly lines, Overground and National Rail, and regular bus routes.

Council Tax band: C

Tenure: Leasehold

EPC Energy Efficiency Rating: E

- Two Double Bedrooms
- First Floor
- 579sqft/53.8sqm
- Close to Clissold Park
- Service & Maintenance charge £1450pa
- 92 years lease
- Ground rent £25.00 pa
- Great Location
- Conversion









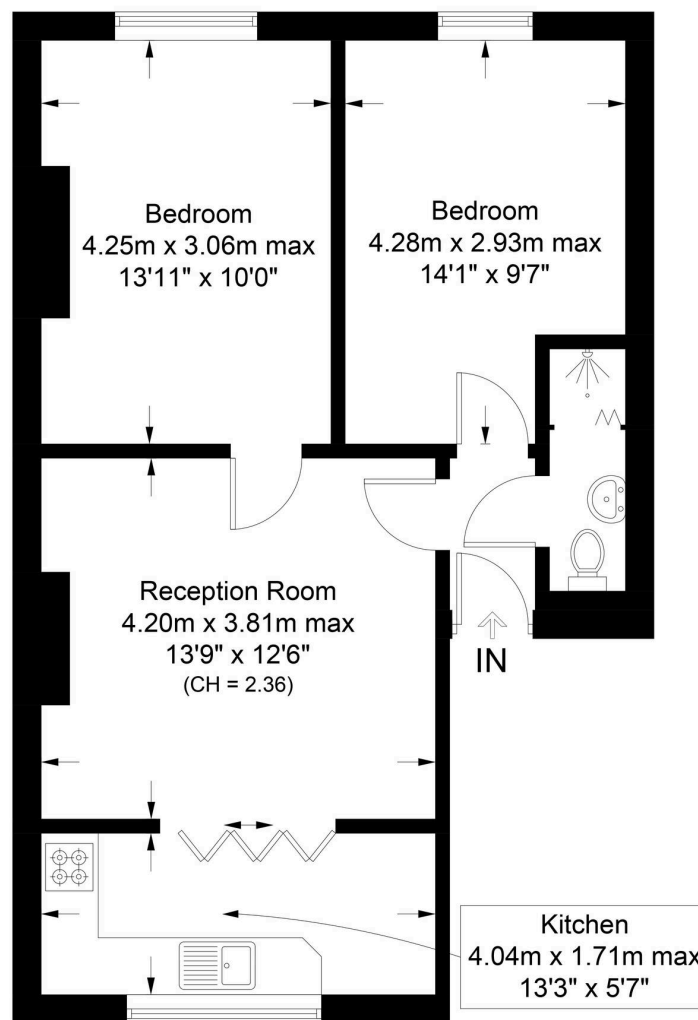






## Mountgrove Road, N5

Approximate Gross Internal Area = 579 sq ft / 53.8 sq m



**Certified  
Property  
Measurer**

This plan is for layout guidance only. Not drawn to scale unless stated. Windows and door openings are approximate. Whilst every care is taken in the preparation of this plan, please check all dimensions, shapes and compass bearings before making any decisions reliant upon them. (ID1090155)

**DAVID  
ANDREW** | your most valuable asset

## David Andrew Estates

90 Highbury Park, London - N5 2XE

020 7354 9111 • [highbury@davidandrew.co.uk](mailto:highbury@davidandrew.co.uk) • [www.davidandrew.co.uk/](http://www.davidandrew.co.uk/)

*scan to book  
a viewing*

