



St. Thomas's Road, N4 2QH

£650,000
Share of Freehold



St. Thomas's Road

£650,000

Share of Freehold

A well appointed and stylish two bedroom period conversion offering Share of Freehold, located in an attractive Victorian building on one of Finsbury Park's most popular roads. The property is situated on the first floor and in excellent condition throughout, featuring a bright reception area with high ceilings and a modernised open plan kitchen. The hallway leads through to a double bedroom including substantial bespoke fitted wardrobes, a contemporary bathroom suite, a further bathroom including a walk-in shower and a further sizeable double bedroom. St. Thomas's Road is a short walk to the green spaces of Finsbury Park, Gillespie Nature Reserve and Clissold Park as well as the boutique cafe's and amenities of Finsbury Park and Highbury. There are excellent transport links nearby including Arsenal Station (Piccadilly Line), Finsbury Park Station (Victoria Line), and easy access to regular local bus routes.

- Share of Freehold
- Period Conversion
- Two Double Bedrooms
- Two Bathrooms
- 734 sqft / 68.2sqm
- Service Charge: £825p.a
- EPC rating - C
- Excellent Location and Transport

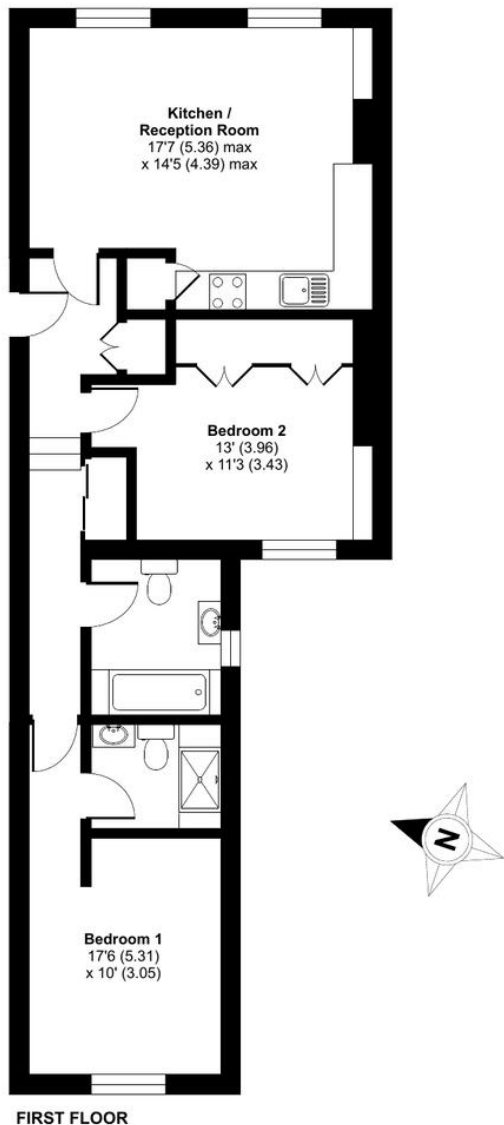




St. Thomas's Road, London, N4

Approximate Area = 734 sq ft / 68.2 sq m

For identification only - Not to scale



DAVID ANDREW

your most valuable asset

Archway Office

671 Holloway Road
London, N19 5SE

T (0)20 7619 3750

Highbury Office

90 Highbury Park
London N5 2XE

T (0)20 7354 9111

Stroud Green Office

167 Stroud Green Road
London N4 3PZ

T (0)20 7281 2000

General Contact

E info@davidandrew.co.uk

W www.davidandrew.co.uk

Score	Energy rating	Current	Potential
92+	A		
81-91	B		
69-80	C	69 c	80 c
55-68	D		
39-54	E		
21-38	F		
1-20	G		

Agent's Note:

Whilst Care has been exercised in the preparation of these sales particulars, statements about the property must not be relied upon as representations of statements or fact. Prospective purchasers must make and rely upon their own enquiries and those of professional representatives. The company accept not liability for any error contained in these particulars.



Floor plan produced in accordance with RICS Property Measurement Standards incorporating International Property Measurement Standards (IPMS2 Residential). © nchecom 2022. Produced for David Andrew. REF: 838371

