



Riversdale Road, N5 2JP

Guide Price £835,000  
Leasehold



# Riversdale Road

Guide Price £835,000

Leasehold

A stunning two-bedroom garden flat within an attractive period property on one of Highbury's most popular roads. Recently modernised to a high standard and beautifully finished throughout, the accommodation offers an open plan kitchen & reception area with exposed brick walls, well-placed skylights and full-width bi-fold doors opening out to a secluded private patio garden, all forming the perfect space for entertaining. There are two well-proportioned double bedrooms. A contemporary shower room sits off of the main hallway, serving both bedrooms. Riversdale Road is quiet & well located for the local amenities of Highbury, and the delightful green spaces of Clissold Park & Highbury Fields. Excellent transport links are provided via Highbury & Islington Station (Overground & Victoria Line), Arsenal (Piccadilly) & Finsbury Park (National Rail and Victoria Line), plus many, well-connected local bus routes.

- Two Double Bedrooms
- Very Well Presented
- 858sqft/79.7sqm
- Private Patio Garden
- Own Private Entrance
- Close to Clissold Park
- Short walk to Highbury Barn
- Excellent Transport Links





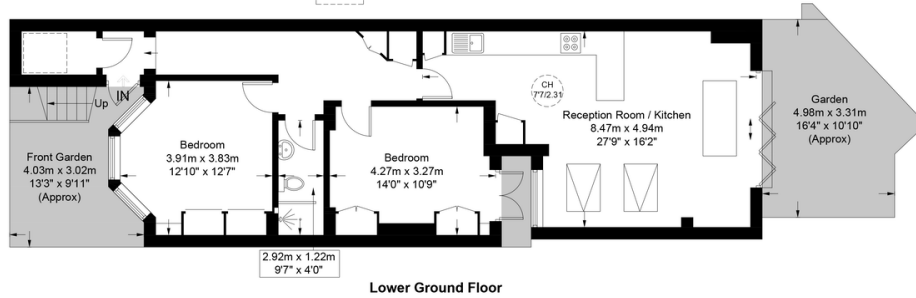
Riversdale Road, N5

Approximate Gross Internal Area = 858 sq ft / 79.7 sq m

Restricted Height = 14 sq ft / 1.3 sq m



= Reduced headroom below 1.5m / 5'0"



This plan is for layout guidance only and is not drawn to scale unless stated. All dimensions, including windows, doors, and the Total Gross Internal Area (GIA), are approximate. For precise measurements, please consult a qualified architect or surveyor before making any decisions based on this plan.



# DAVID ANDREW

your most valuable asset

### Archway Office

671 Holloway Road  
London, N19 5SE

T (0)20 7619 3750

### Highbury Office

90 Highbury Park  
London N5 2XE

T (0)20 7354 9111

### Stroud Green Office

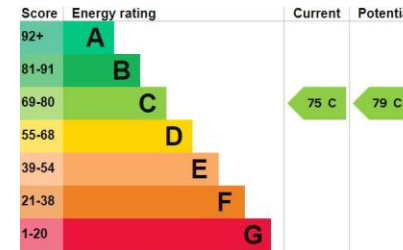
167 Stroud Green Road  
London N4 3PZ

T (0)20 7281 2000

### General Contact

E [info@davidandrew.co.uk](mailto:info@ davidandrew.co.uk)

W [www.davidandrew.co.uk](http://www.davidandrew.co.uk)



#### Agent's Note:

Whilst Care has been exercised in the preparation of these sales particulars, statements about the property must not be relied upon as representations of statements or fact. Prospective purchasers must make and rely upon their own enquiries and those of professional representatives. The company accept not liability for any error contained in these particulars.

