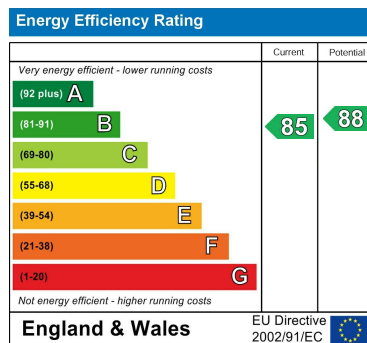
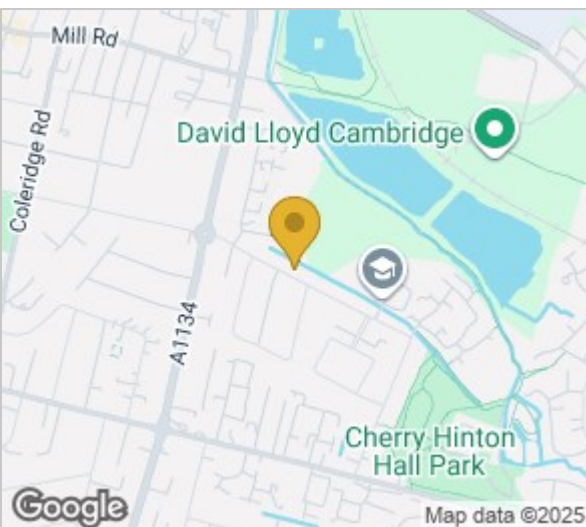
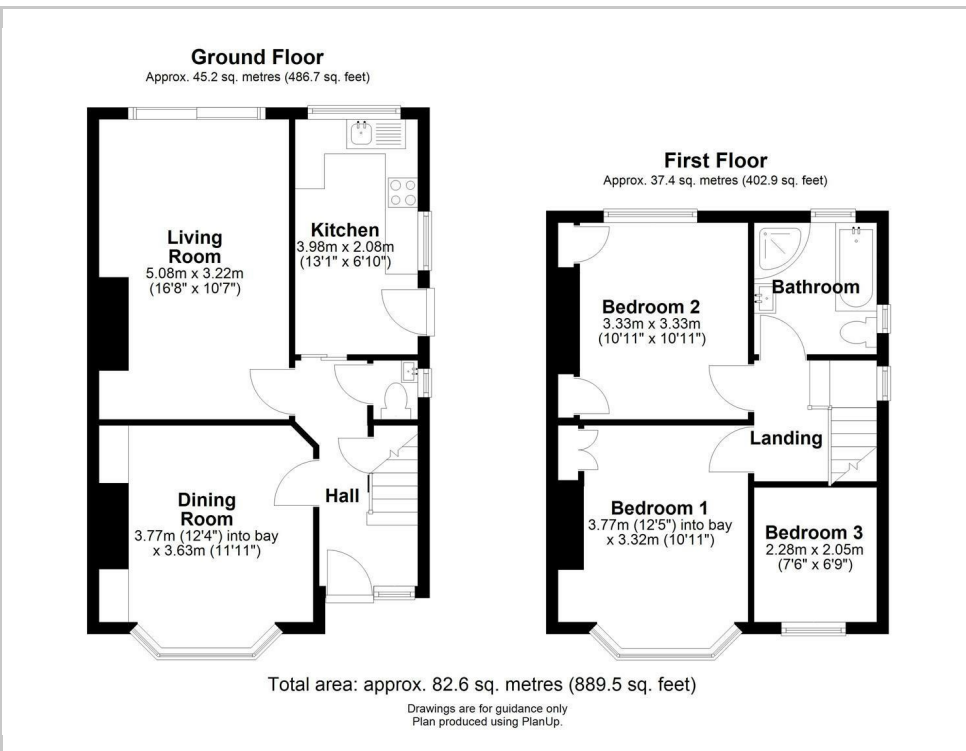




61 Birdwood Road, Cambridge, CB1 3ST
£1,850 Per month



- Available now
- Furnished or unfurnished
- Excellent location
- EPC: B

A very nicely presented 3 bedroom, semi-detached property with off-road parking and garden, located superbly for local employment and schooling.

On the ground floor there is a large front reception room with bay window. The modern kitchen overlooks the garden and has plenty of worktop space and cabinets. There is a gas hob, fridge freezer and washing machine as well as breakfast bar. Adjacent to the kitchen is a second, large, reception room with patio doors to the garden. The space under the stairs has been cleverly utilised for a downstairs wc.

Upstairs there are three bedrooms, two of which are good sized doubles and the third a single or an excellent home office. The two double bedrooms have integrated storage. The family bathroom is a good specification with bath and a separate shower.

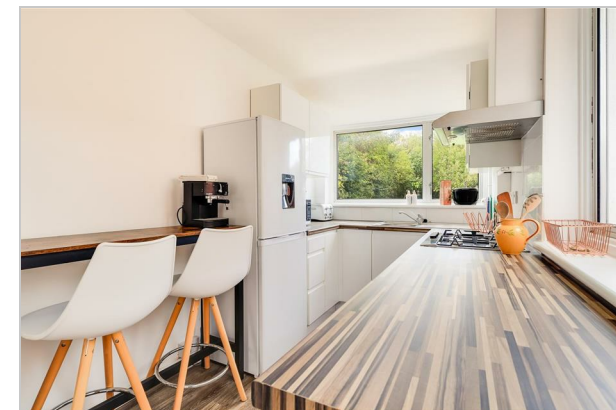
At the rear of the property are two storage sheds and a private, enclosed garden mainly laid to lawn with mature fruit trees. There is off-road parking at the front of the property.

The property is available immediately and is currently furnished, though it can be let unfurnished.

Birdwood Road is a lovely residential road moments away from St Bedes School and the amenities on Perne Road.

///plays.label.invite

Council Tax: D EPC:



These particulars, whilst believed to be accurate are set out as a general outline only for guidance and do not constitute any part of an offer or contract. Intending purchasers should not rely on them as statements of representation of fact, but must satisfy themselves by inspection or otherwise as to their accuracy. No person in this firms employment has the authority to make or give any representation or warranty in respect of the property.

Cambridge Victoria: 154-156 Victoria Road, Cambridge, CB4 3DZ
01223 439 888 theteam@grayandtoynbee.com

Cambridge South: Adkins Corner, Perne Road, Cambridge CB1 3RU
01223 439 555 theteam@grayandtoynbee.com

Waterbeach: 17 High Street, Waterbeach, CB25 9JU
01223 949 444 waterbeach@grayandtoynbee.com