

50 Searle Street
Cambridge, CB4 3DB

Guide price £750,000



50 Searle Street

Cambridge, CB4 3DB

- Spacious 3 bedroom Victorian terrace
- Luxury kitchen and bathrooms
- Off road parking
- EPC rating C

A 3-bedroom Victorian terrace, redesigned and extended to create a wonderful home, with about 1200 sq. ft of spacious accommodation and gated private parking.

This stylish, beautifully appointed house is in an excellent location just moments from the river, situated on a quiet road with the benefit of off-road parking and space for a garage (subject to planning).

The ground floor accommodation is open plan and has been extended at the rear. The living area has a cast iron fireplace with fitted cupboards other side. The dining area is a good size and leads through to the kitchen/breakfast room, which has a large island and is well-appointed with high-quality finishes including quartz worktops, an integrated dishwasher, washing machine, induction hob, and a combi-oven and oven. Bi-fold doors span the room and lead to the garden.





There is an entrance hall with stairs to the first floor, where there are two double bedrooms, and the front room has a cast iron fireplace with tiled slips. The rear bedroom has double doors to a balcony which has lovely views of St Luke's church. The family bathroom is fabulous with a freestanding slipper bath, separate shower and WC.

On the second floor is the main bedroom with a Large Velux roof light and a windows which also overlook the church. There is a well-appointed en-suite shower room and WC.

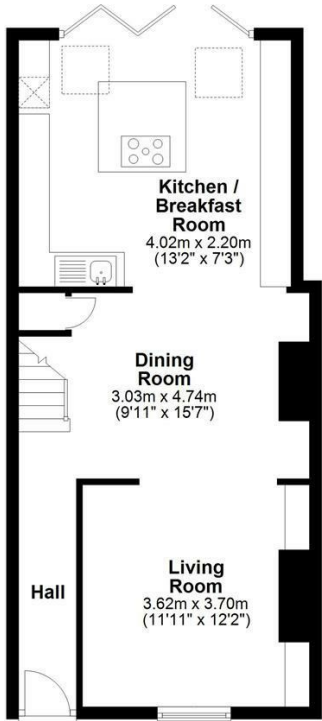
The house has double glazing and gas central heating with attractive cast iron style radiators.

At the rear, there is an attractive garden which has a decked seating area and slate walling which separates the parking area where there is space for a large car accessed via timber gates onto Hilda St.

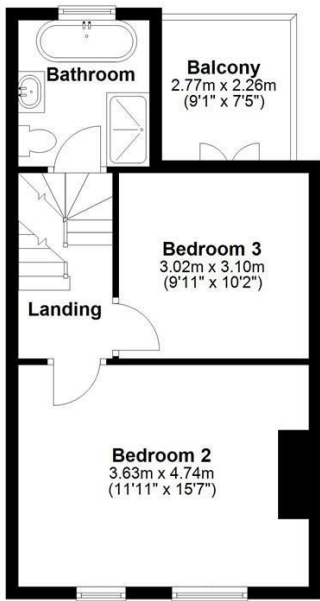
What3words: ///melon.violin.fluid



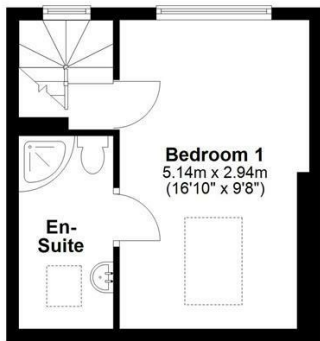
Ground Floor
Approx. 50.3 sq. metres (541.3 sq. feet)



First Floor
Approx. 37.3 sq. metres (401.7 sq. feet)

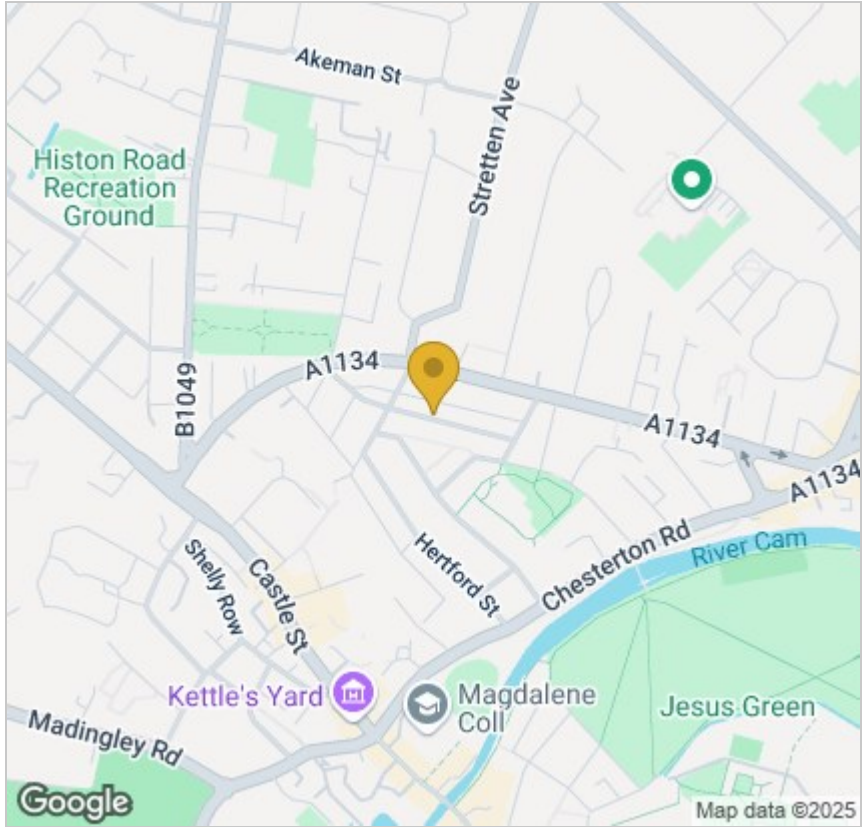


Second Floor
Approx. 23.2 sq. metres (249.5 sq. feet)

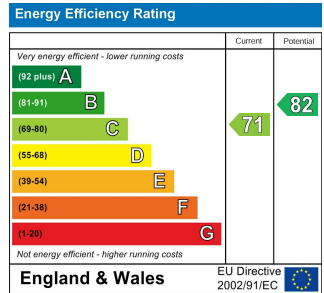


Total area: approx. 110.8 sq. metres (1192.4 sq. feet)

Drawings are for guidance only
Plan produced using PlanUp.



Energy Efficiency Graph



Tenure: Freehold
Council tax band: D

These particulars, whilst believed to be accurate, are set out as a general outline only for guidance and do not constitute any part of an offer or contract. Intending purchasers should not rely on them as statements of representation of fact, but must satisfy themselves by inspection or otherwise as to their accuracy. No person in this firm's employment has the authority to make or give any representation or warranty in respect of the property.

Cambridge Victoria
154-156 Victoria Road, Cambridge CB4 3DZ
01223 439 888 theteam@grayandtoynbee.com

Cambridge South
Adkins Corner, Perne Road, Cambridge CB1 3RU
01223 439 555 theteam@grayandtoynbee.com

Waterbeach
17 High Street, Waterbeach, CB25 9JU
01223 949 444 waterbeach@grayandtoynbee.com