



12 Doggett Road, Cherry Hinton,
Cambridge, CB1 9LF

Guide price £475,000



12 Doggett Road

Cherry Hinton, CB1 9LF

- No chain
- Excellent location
- Good size garden
- Garage

A semi-detached, three-bedroom house, requiring updating, on a good-sized plot, in a popular location within walking distance of the High Street, Cherry Hinton Hall and The Spinney.

This family house is in an established and popular location close to the excellent local amenities and walking distance to the primary school.

The accommodation has been well maintained but does require some updating. There is a hallway, an L-shaped living/dining room with a gas fire, under-stairs storage and double-glazed patio doors to the garden. The kitchen has plenty of storage, an oven, a hob and an extractor, and a tiled floor. The useful utility room has a door to the side.

Upstairs, there are three bedrooms, two are doubles. The shower room has been refitted and has a tiled shower cubicle, WC and part wall tiling.





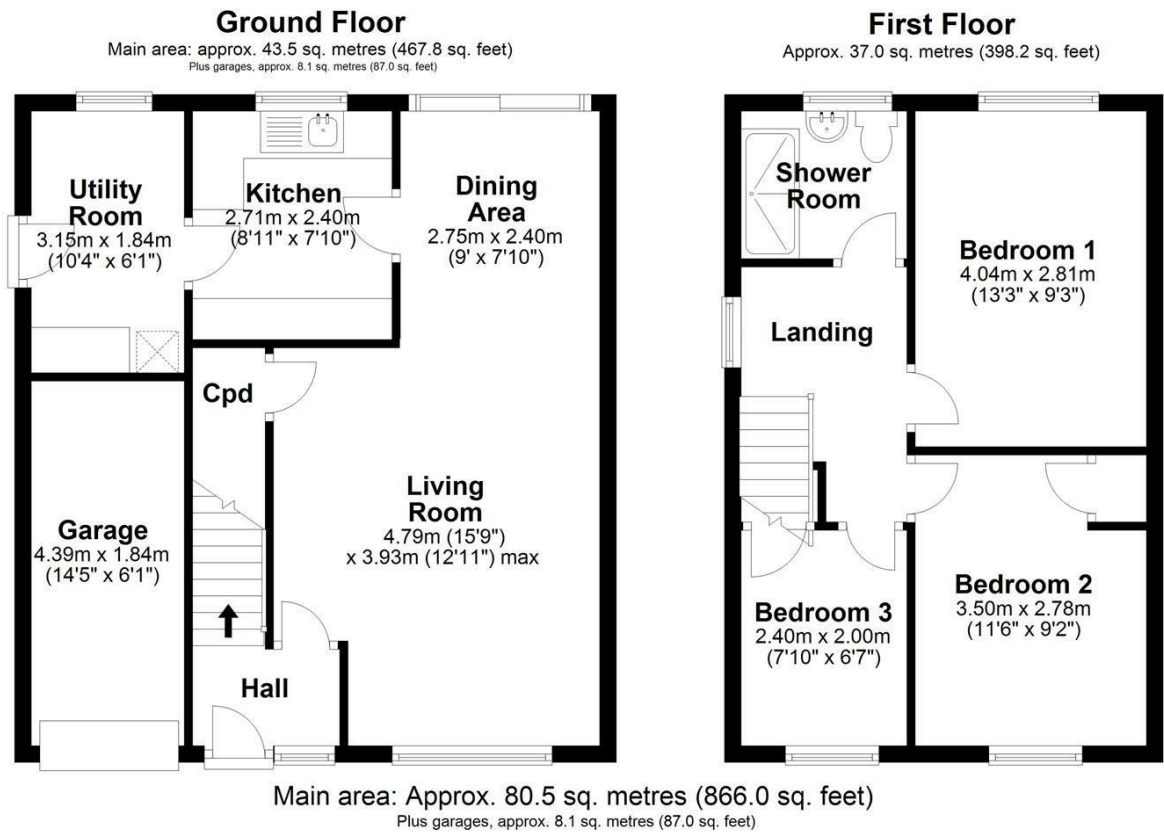
There is gas central heating, and almost full double glazing.

At the front, there is a good-sized garden and driveway providing parking and access to the garage, where the boiler is located. Side access leads to the rear garden, which is mature and well-stocked. It is enclosed by fencing and has a timber shed and patio.

What3words: ///goes.intro.chop



Floor Plan

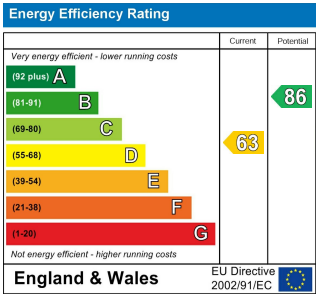


Drawings are for guidance only
Plan produced using PlanUp.

Area Map



Energy Efficiency Graph



Please contact our Gray & Toynbee - Cambridge Office on 01223 439 888 if you wish to arrange a viewing appointment for this property or require further information.

Tenure: Freehold
Council tax band: