



103 Pheasant Rise, Cambridge, CB23 8SB  
£1,450 Per month



3



2



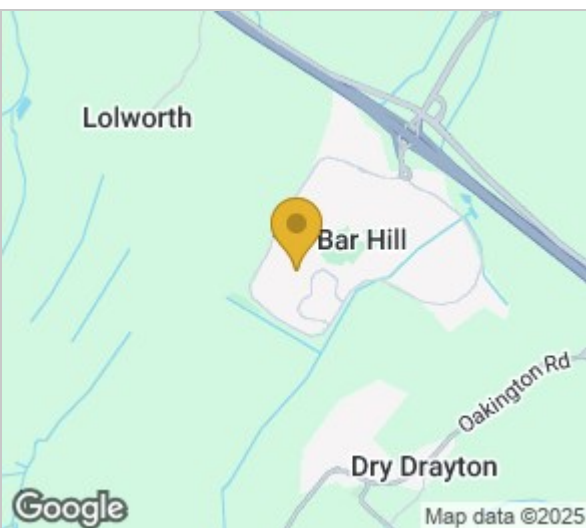
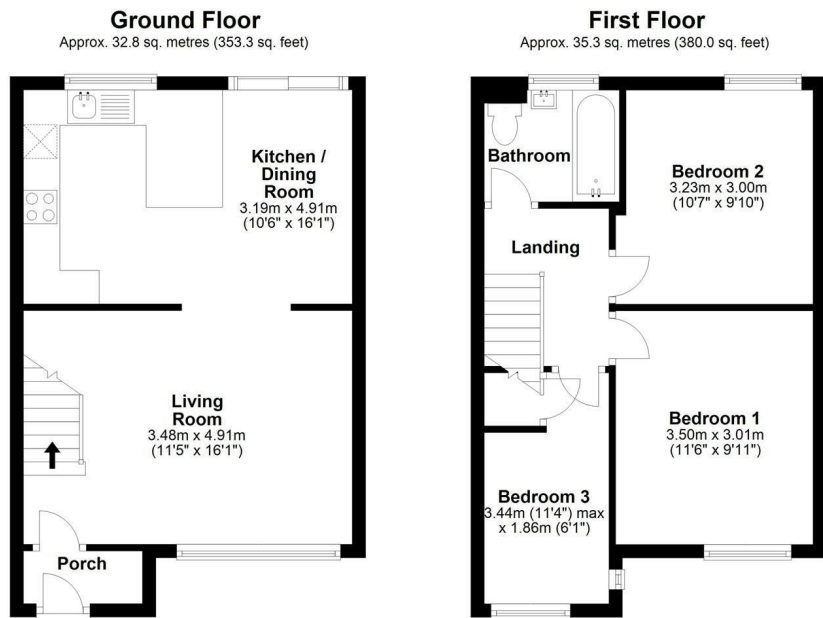
1



C



## Floor Plan



Energy Efficiency Rating		
	Current	Potential
Very energy efficient - lower running costs		
(92 plus) <b>A</b>		90
(81-91) <b>B</b>		
(69-80) <b>C</b>	74	
(55-68) <b>D</b>		
(39-54) <b>E</b>		
(21-38) <b>F</b>		
(1-20) <b>G</b>		
Not energy efficient - higher running costs		
<b>England &amp; Wales</b>	EU Directive 2002/91/EC	

Viewing: Please contact our Gray & Toynbee - Cambridge Office on 01223 439 888 if you wish to arrange a viewing appointment for this property or require further information.

## Accommodation

- Gas Central Heating
- Refurbished Throughout
- Enclosed Garden

An extremely well-presented 3 bedroom mid terrace house located in the popular village of Bar Hill. Plenty of local amenities, including a primary school, nursery, doctor surgery, pub/restaurant and a Tesco superstore. Good access to the A14, A428, and M11, and a short drive from Cambridge city center.

There is a useful porch area on entering the house, this opens into the living room which has wood effect flooring and bespoke shutters to the front window. This leads into the kitchen/dining area. The kitchen includes an integral oven/hob, space and plumbing for a washing machine, and space for a fridge/freezer. There are sliding doors into the enclosed rear garden, which includes a patio, lawn, and shed.

Upstairs are three bedrooms, two of which are doubles and the third would make a lovely home office or nursery. The family bathroom has been re-fitted with a WC, basin, and bath with shower over. The bath features a digital control for the water to the bath and shower

Unrestricted on-street parking.

EPC Rating: C. Council Tax Band: C.

What3Words:///globe.starring.strongman



Cambridge Office: 154-156 Victoria Road, Cambridge, CB4 3DZ Waterbeach Office: 17 High Street, Waterbeach, CB25 9JU  
Tel: 01223 439 888 Email: [theteam@grayandtoynbee.com](mailto:theteam@grayandtoynbee.com) Tel: 01223 949 444 Email: [waterbeach@grayandtoynbee.com](mailto:waterbeach@grayandtoynbee.com)

These particulars, whilst believed to be accurate are set out as a general outline only for guidance and do not constitute any part of an offer or contract. Intending purchasers should not rely on them as statements of representation of fact, but must satisfy themselves by inspection or otherwise as to their accuracy. No person in this firm's employment has the authority to make or give any representation or warranty in respect of the property.

**GRAY TOYNBEE**