



20 Martingale Close
Cambridge, CB4 3TA

Offers in excess of £400,000



20 Martingale Close

Cambridge, CB4 3TA

- Driveway and garage
- South facing garden
- Family home
- Excellent location

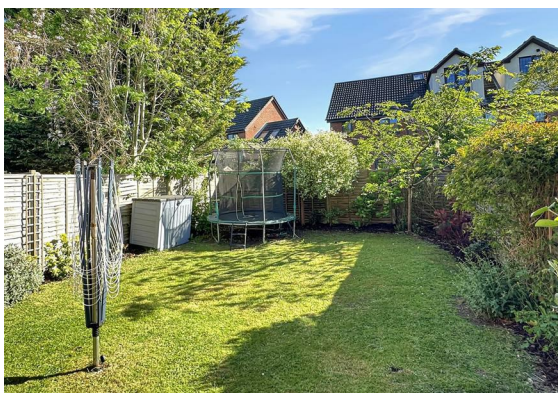
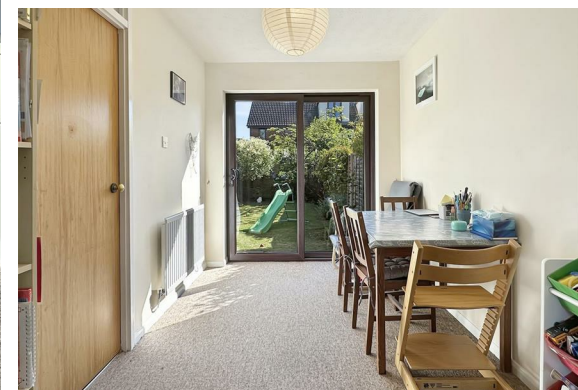
A three-bedroom semi-detached house with a garage, situated in a popular and quiet cul-de-sac just off Histon Road, ideal for families or first-time buyers.

The property is in a lovely, quiet, spot and has a lawned front garden and driveway parking. The accommodation is well-planned and includes a hallway, a spacious open-plan living/dining area, which has a dual aspect including doors to the rear garden, as well as a useful understairs cupboard providing additional storage.

The kitchen is well-equipped with plenty of cupboards and has an integrated hob and oven, and space for a tall fridge-freezer, and dishwasher.

Upstairs, there are three bedrooms, two are doubles, and the third room is perfect as a single room or home office.

The family bathroom, has a shower over the bath, basin and WC.





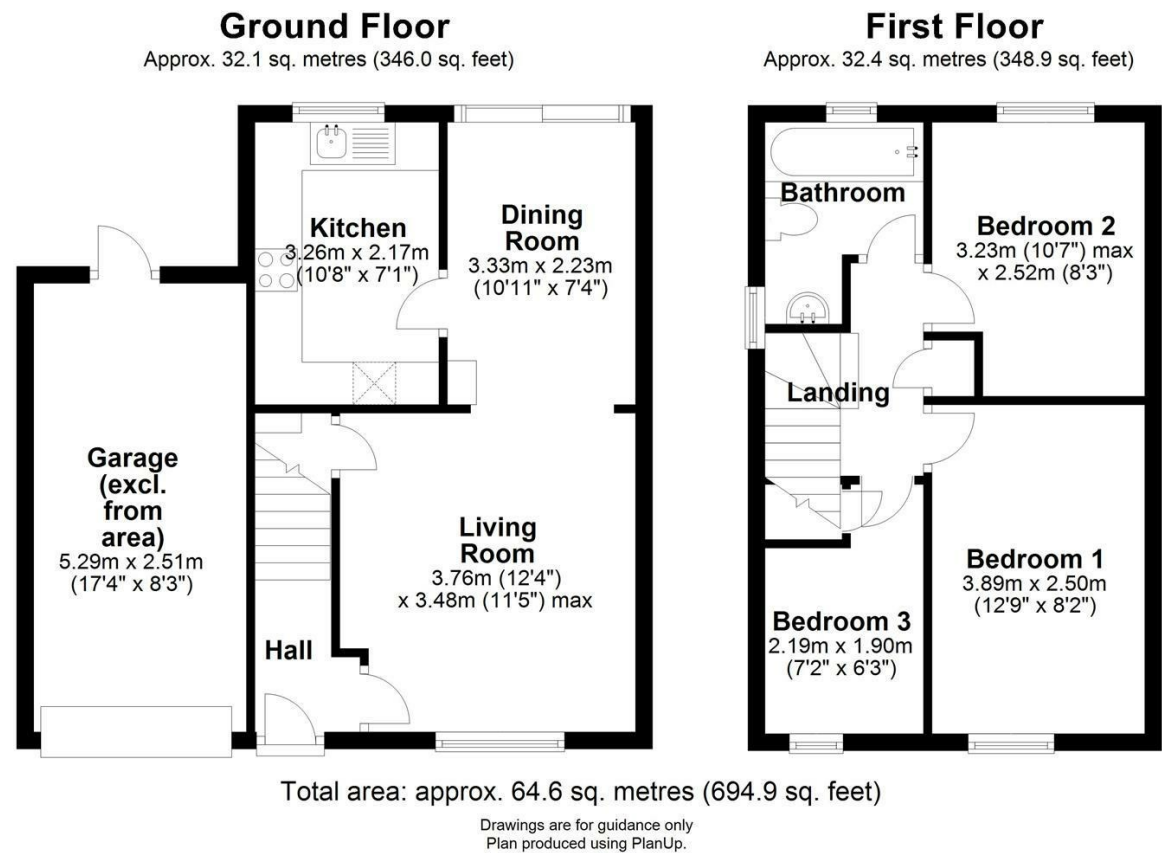
The house has gas central heating supplied by the boiler in the kitchen, double glazing throughout, and has approved planning permission for a double-story rear extension.

The south-facing garden is a standout feature, and is beautifully bright and an excellent size for a modern house. There are flower beds, a patio and the whole is enclosed by fencing. A garage adjoins the house and has power and light and is currently being used as a home gym.

What3words: ///sobs.candy.store



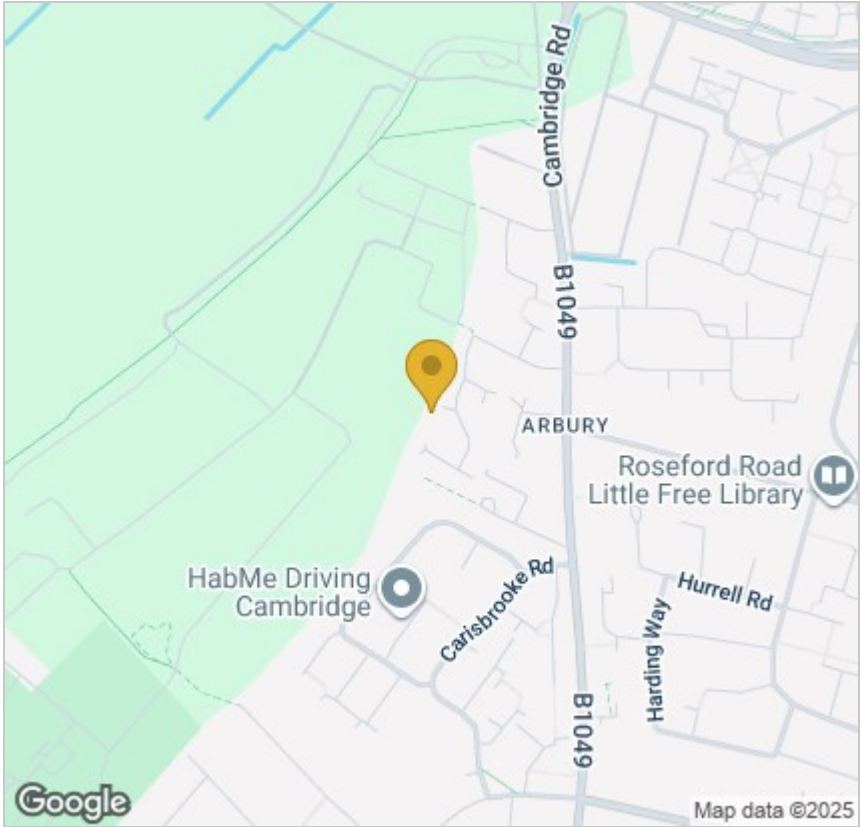
Floor Plan



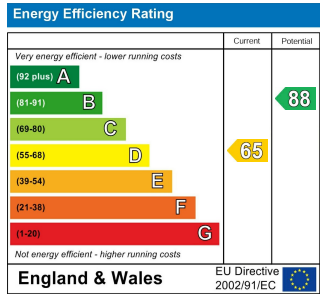
Please contact our Gray & Toynbee - Cambridge Office on 01223 439 888 if you wish to arrange a viewing appointment for this property or require further information.

Tenure: Freehold
Council tax band: D

Area Map



Energy Efficiency Graph



These particulars, whilst believed to be accurate are set out as a general outline only for guidance and do not constitute any part of an offer or contract. Intending purchasers should not rely on them as statements of representation of fact, but must satisfy themselves by inspection or otherwise as to their accuracy. No person in this firm's employment has the authority to make or give any representation or warranty in respect of the property.

Cambridge Office: 154-156 Victoria Road, Cambridge CB4 3DZ
Tel: 01223 439 888 Email: theteam@grayandtoynbee.com

Waterbeach Office: 17 High Street, Waterbeach, CB25 9JU
Tel: 01223 949 444 Email: waterbeach@grayandtoynbee.com

