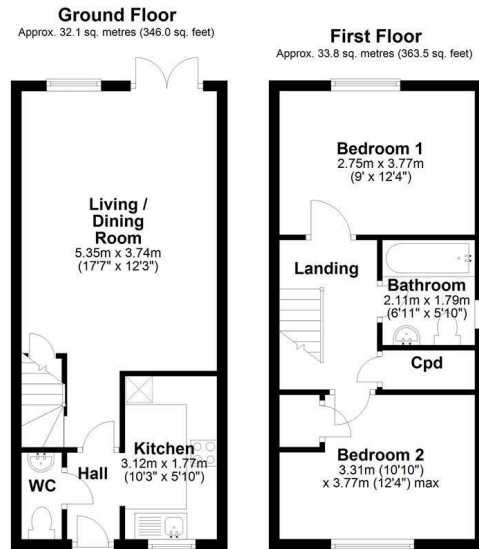




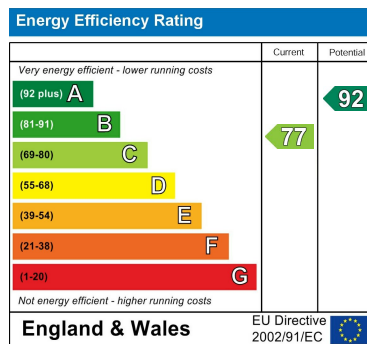
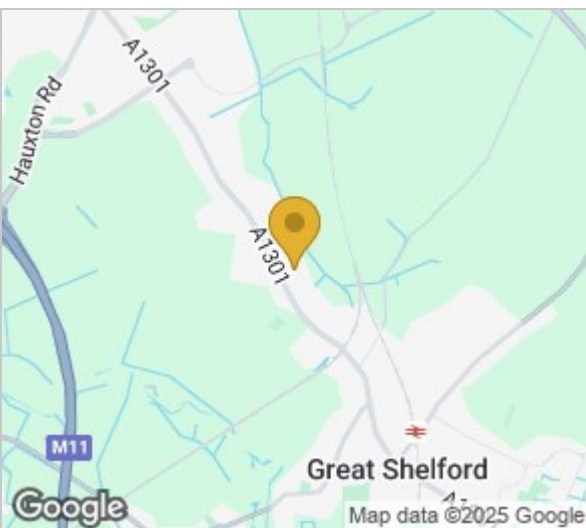
9 May Pasture, Cambridge, CB22 5FA
£1,650 Per month

Floor Plan



Total area: approx. 65.9 sq. metres (709.5 sq. feet)

Drawings are for guidance only
Plan produced using PlanUp.



Accommodation

- Excellent location
- Available unfurnished
- Recently redecorated
- Off-street parking

A wonderfully presented and newly decorated two-bedroom semi-detached house located in the highly desirable village of Great Shelford.

On the ground floor, there is an entrance hallway leading to the kitchen, a large open-plan living area, and a downstairs w/c. The kitchen is very well equipped with an integrated washer/dryer, slimline dishwasher, and fridge freezer. There is also a bosch single oven and gas hob.

The living area is large and bright with french doors to the rear garden. The rear garden is partially laid to a patio and all-weather grass, with border shrubs. There is also side access for bikes and bins.

Upstairs are two double bedrooms, a family bathroom, and a large storage cupboard on the landing. There is designated off-road parking at the front of the property.

May Pastures is a small, select development of properties just off Cambridge Road, Great Shelford. Addenbokes Hospital, the M11, and Waitrose are only a few minutes drive away and there is excellent public transport close by.

The landlord will not accept pets at this property.

Council Tax band B & EPC: C

///logbook.escapades.sweated



Cambridge Office: 154-156 Victoria Road, Cambridge, CB4 3DZ Waterbeach Office: 17 High Street, Waterbeach, CB25 9JU
Tel: 01223 439 888 Email: theteam@grayandtoynbee.com Tel: 01223 949 444 Email: waterbeach@grayandtoynbee.com

These particulars, whilst believed to be accurate are set out as a general outline only for guidance and do not constitute any part of an offer or contract. Intending purchasers should not rely on them as statements of representation of fact, but must satisfy themselves by inspection or otherwise as to their accuracy. No person in this firm's employment has the authority to make or give any representation or warranty in respect of the property.

**GRAY
TOYNBEE**