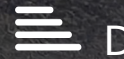


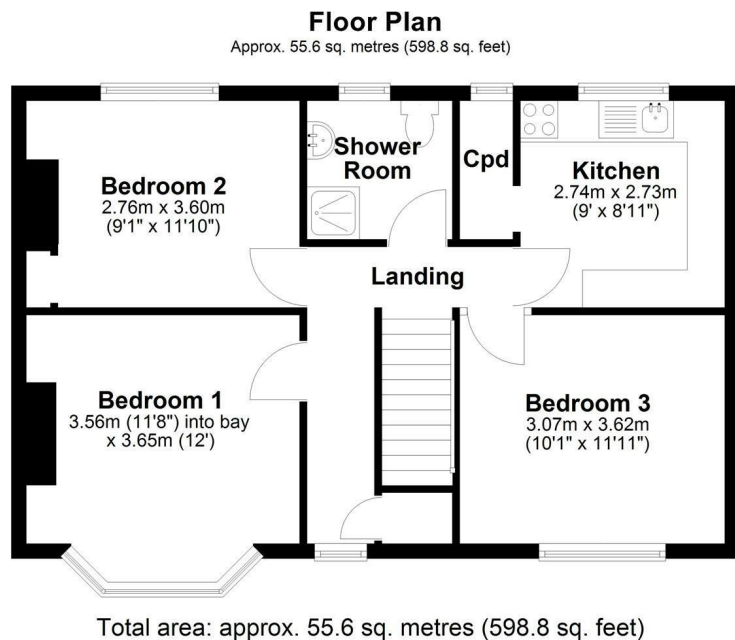


10 Harvey Goodwin Avenue, Cambridge, CB4 3EU  
£1,800 Per month

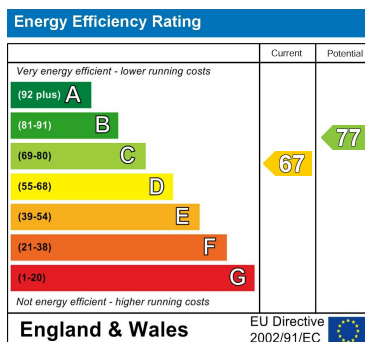
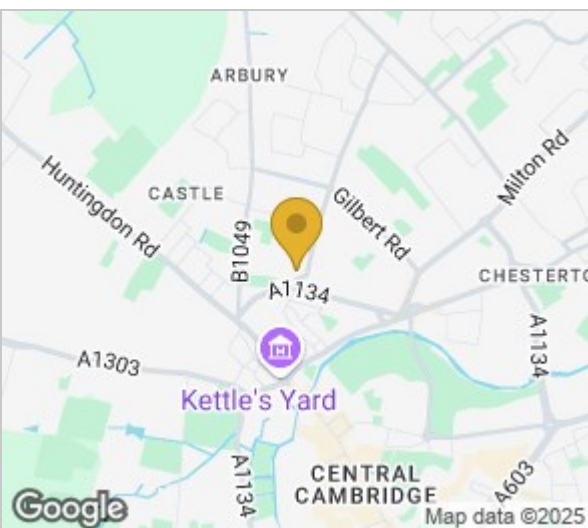




## Floor Plan



Drawings are for guidance only  
Plan produced using PlanUp.



Viewing: Please contact our Gray & Toynbee - Cambridge Office on 01223 439 888 if you wish to arrange a viewing appointment for this property or require further information.

## Accommodation

- Fully furnished
- Available for students

A superb and fully furnished 3-bed flat, located conveniently for access to the City.

This first-floor flat has three good-sized bedrooms, each furnished with a bed, bedside table, chest of drawers, and a chair. The kitchen is a good sized and well equipped with appliances including a fridge, freezer and a washing machine. The bathroom is fitted with a shower, wc, and basin.

Harvey Goodwin Avenue is located just off Victoria Road and provides good access to the local amenities and the city center. The property would be ideal for a group of students. There is on-street parking available and the property will be available from August.

EPC: C Council Tax Band: B

What3words: ///keeps.edgy.remedy



Cambridge Office: 154-156 Victoria Road, Cambridge, CB4 3DZ Waterbeach Office: 17 High Street, Waterbeach, CB25 9JU  
Tel: 01223 439 888 Email: [theteam@grayandtoynbee.com](mailto:theteam@grayandtoynbee.com) Tel: 01223 949 444 Email: [waterbeach@grayandtoynbee.com](mailto:waterbeach@grayandtoynbee.com)

These particulars, whilst believed to be accurate are set out as a general outline only for guidance and do not constitute any part of an offer or contract. Intending purchasers should not rely on them as statements of representation of fact, but must satisfy themselves by inspection or otherwise as to their accuracy. No person in this firm's employment has the authority to make or give any representation or warranty in respect of the property.

**GRAY  
TOYNBEE**